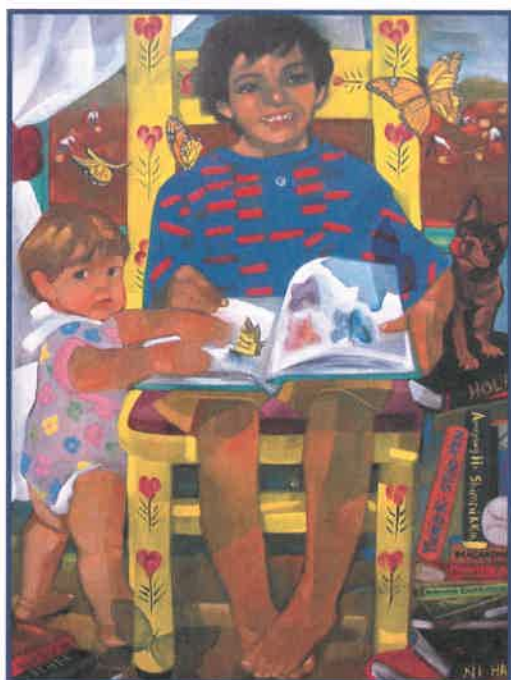
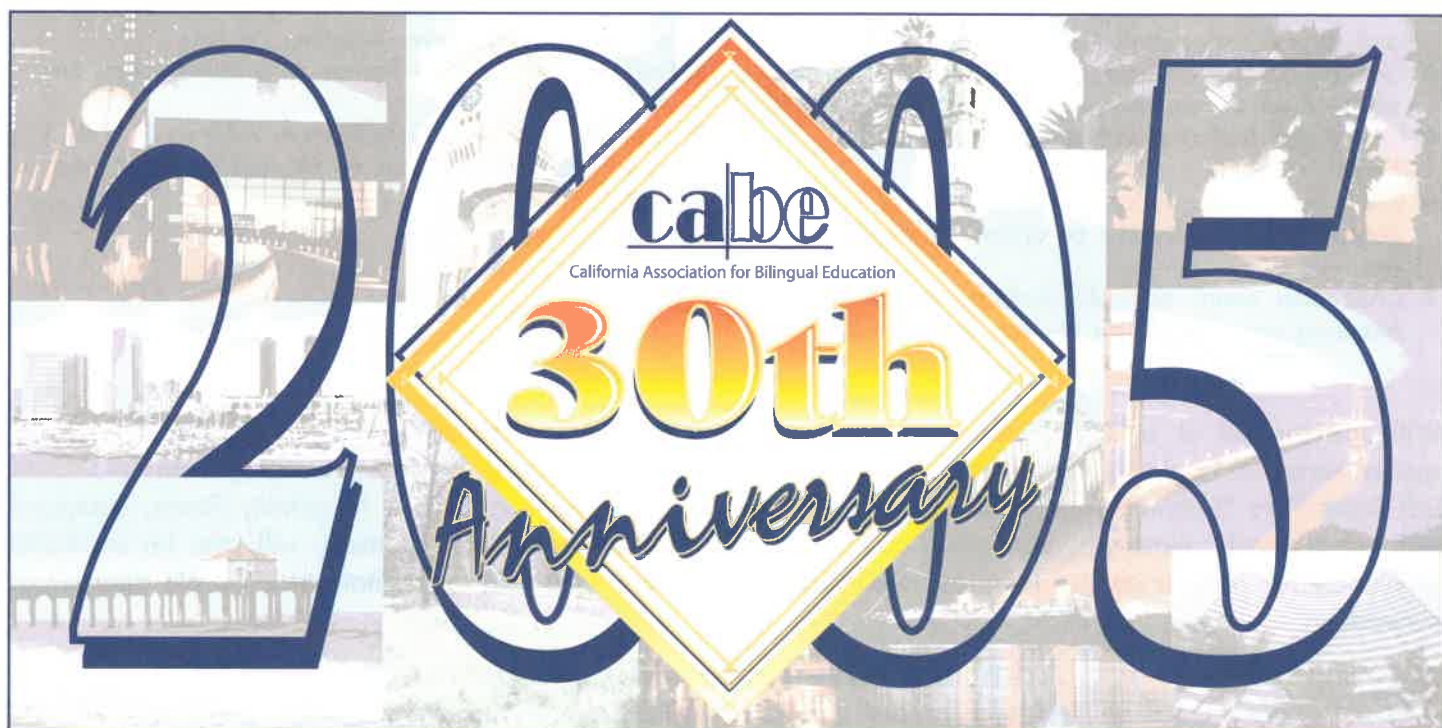




California Association for Bilingual Education  
16033 E. San Bernardino Road  
Covina, CA 91722-3900

Presorted  
First Class Mail  
U.S. Postage  
**PAID**  
Pasadena, CA  
Permit No. 1132



CABE: A Legacy of Transforming Hearts and Minds

## Join us for CABE 2005: Intensive Professional Development for Educators of English Language Learners

Los Angeles Convention Center  
February 23-26, 2005

Register online at [www.bilingualeducation.org](http://www.bilingualeducation.org)

The California Association for Bilingual Education invites you to attend its 30th annual conference providing intensive professional development opportunities for administrators, teachers, para-educators, parents and community members working with second language learners. As part of a long-term, coherent professional development plan, this conference provides an ideal way for principals and administrators in charge of professional development to motivate teachers and parents towards becoming "highly qualified" to work with English Learners and to develop the professional expertise necessary for students' academic success. CABE 2005 allows teachers to meet the NCLB requirement. Teachers who attend the full four-day conference of standards aligned professional development can accrue up to 20 hours (earning 5 points) towards

## Wednesday, February 23, 2005 Highlights

- ◆ An outstanding selection of half-day institutes and workshops
- ◆ Grand Opening of the Exhibit Hall featuring instructional materials for English Learners
- ◆ Opening General Session with Keynote Speaker: Giselle Fernandez and other specially invited dignitaries
- ◆ CAFE after hours: Membership Reception and dance with music by "Charanga Cubana"

## Thursday, February 24, 2005 Highlights

- ◆ An outstanding selection of featured speakers, half-and full-day institutes and workshops in a wide variety of strands and for all instructional levels—including parents
- ◆ General Session Keynote Address by Dr. James A. Banks whose area of expertise is the application of social justice issues to educational practice
- ◆ Exhibit Hall featuring instructional materials for English Learners
- ◆ CAFE Educator of the Year Luncheon
- ◆ CAFE after hours: Fundraiser and Dance featuring outstanding talent, Quetzal

## Friday, February 25, 2005 Highlights

- ◆ An outstanding selection of half-day and full day institutes and workshops in a wide variety of strands and for all instructional levels—including parents
- ◆ General Session Keynote Address by J.D. Hokoyama whose area of expertise is Leadership Development
- ◆ Exhibit Hall featuring instructional materials for English Learners
- ◆ CAFE Seal of Excellence Banquet featuring outstanding and effective programs for English Learners
- ◆ CAFE after hours: Seal of Excellence Dance featuring music by "Susie Hanson Latin Band"

## Saturday, February 26, 2005 Highlights

- ◆ An outstanding selection of featured presentations and workshops in a wide variety of strands and for all instructional levels—including parents
- ◆ Economic Summit – A Forum on Multilingualism and our Global Society
- ◆ General Closing Session Keynote Address by Luis J. Rodriguez, noted author of "Always Running" and poet.

## Parent Hospitality Center

With the support of a U.S. Department of Education grant, CAFE's Project INSPIRE is pleased to offer a special series of leadership workshops for parents during the conference on topics ranging from "No Child Left Behind" to "Helping Your Child Prepare for College". The Rosalía Salinas Hospitality Room, equipped with refreshments, materials, networked computers, technical assistance and trainers, will also be available exclusively for parents to give them an orientation to the conference and to facilitate their on-site and virtual networking.

## Administrative Leadership Symposium

Friday, February 25, 2005 10:30 a.m. - 12:30 p.m.

Well-known researchers Patricia Gándara and Gary Orfield present: "Swimming Upstream: Cumulative inequality and the teaching of English Learners—Findings from new research"

## California Department of Education-Technical Assistance Room

California Department of Education Consultants will be available throughout the conference to offer special assistance to district personnel in charge of English Learner programs.



## Getting to the Los Angeles Convention Center

If you are commuting to the LA Convention Center—avoid the traffic and parking fees! Take the Metrolink to Union Station from most areas that provide the service, e.g., San Fernando, Santa Barbara, San Bernardino, Riverside and Orange County. At the Union Station take the Red Line to Figueroa Station and then take the CAFE shuttle to the Convention Center from the Wilshire Grand Hotel on the corner of 7th and Figueroa.



If you are coming from the Norwalk (Green Line), Pasadena (Gold Line) or Long Beach (Blue Line) areas you can also avoid traffic to downtown Los Angeles. (see maps)

