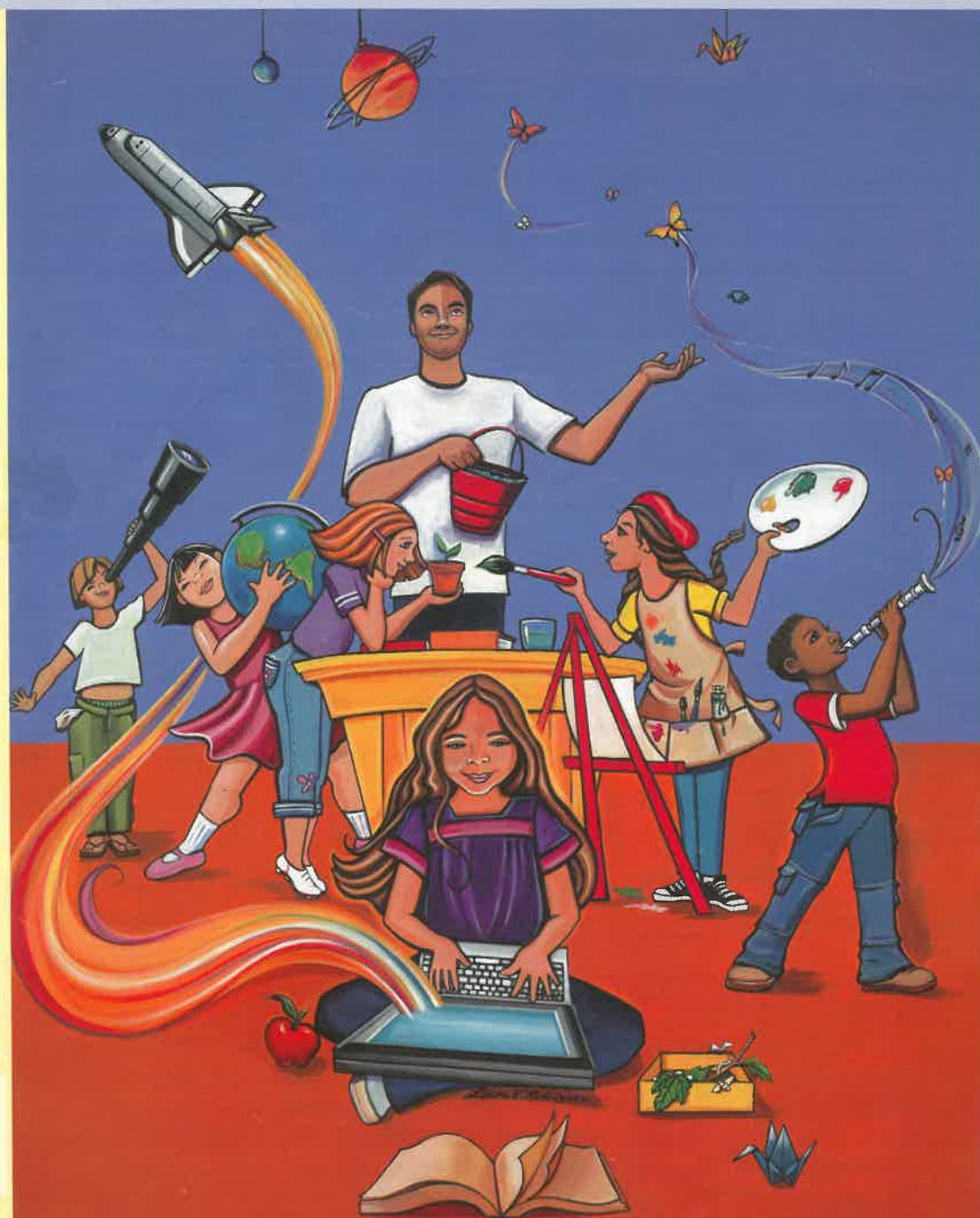


# California Association for Bilingual Education

## CABE 2007



**Annual  
Conference**

Registration  
Materials

**Educating Every Student:  
Investing in Tomorrow—TODAY**

Long Beach Convention Center  
Long Beach, California  
March 14 - 17, 2007



**CABE is the premier organization for High Quality, Standards-Aligned Professional Development for ALL educators and parents involved in the education of second language learners in all types of instructional programs.**

Each year the annual conference brings together the largest nationwide gathering of educators, parents, community members and policymakers -- all involved in the education of English Learners. Over 7,000 attendees join forces to engage in learning about new strategies, materials, recent research and networking opportunities that improve instructional programs and increase the achievement of English Learners and other students learning a second language.

CABE 2007 offers participants professional development that engages them in collaborative and collegial work, while providing opportunities for meaningful individual learning. Every type of professional development event planned — keynote and featured speakers, institutes, and workshops — develops, refines, and expands participants' pedagogical repertoire, content knowledge and skills, and promotes the use of continuous inquiry and reflection to increase their capacity to educate English Learners in ALL types of instructional settings.

*Research tells us that every effort to transform schools calls attention to professional development as a primary vehicle to bring about needed change in schools. The CABE annual conference is committed to bringing every attendee up-to-date, research-based, standards-aligned professional development that integrates the principles of good teaching and learning, together with stimulating, respectful environments conducive to adult learning.*

At CABE 2007 participants can attend a wide variety of professional development opportunities--all planned around professional development strands that offer new, innovative ways of:

- **Planning instruction for second language learners in all instructional settings**
- **Administering culturally and linguistically appropriate programs for all types of learners and instructional settings**
- **Designing learning experiences for culturally, linguistically and racially, diverse background students to ensure their academic achievement**
- **Learning about new and effective instructional materials and Integrating technology in programs for second language learners**
- **Adapting subject matter and English Language Development lessons that raise the level of academic English and increase subject matter knowledge**
- **Highlighting successful practices with proven results**
- **Assessing and monitoring student learning for academic success**
- **Engaging parents and community in the instructional program.**

## NEW FEATURE

This year the paper Badge is being replaced by the Conference Registration Card. Your Conference Registration Card gives you access to all events purchased. Use this card to attend all conference events, including workshops, institutes, exhibit hall, luncheons, and evening events. All events purchased will be programmed onto the cards. Your card must be worn and available to be read by a scanner for admittance to all conference events.

### Exhibits

Exhibitors with instructional materials used in all content areas for English Learners, including technology, provide participants the opportunity to review and purchase the latest in materials and publications. (See the Preliminary Agenda page of this brochure for Exhibit hours.)

### Career Fair

School districts and various agencies participate with the primary goal of recruiting educational professionals for their districts and/or organizations. This is the perfect opportunity to learn more about employment and professional opportunities within the educational field or other fields seeking bilingual personnel. A special Career Fair section with employment opportunities is also featured in the conference program. (See the Preliminary Agenda page in this brochure for Career Fair hours.)

### Special Luncheons and Banquet/Dance

CABE 2007 features two special luncheons and a Friday night banquet. Thursday's luncheon highlights Educator of the Year Awards while Friday's luncheon honors parents and student essay winners. The Seal of Excellence Banquet and Dance features a keynote address and the 2007 Seal of Excellence schools highlighting outstanding programs. For information about the nomination opportunities for each of these awards, please contact CABE Headquarters at (626) 814-4441 or visit CABE's website at [www.bilingualeducation.org](http://www.bilingualeducation.org) for all applications.

### California Department of Education Technical Assistance

The English Learner Accountability Unit and the Language Policy and Leadership Office encourage parents, teachers and district representatives to stop by their technical assistance room where they provide information and answer questions regarding legal requirements for educational services to English Learners. Information from the USDE Office for Civil Rights and the California Commission on Teacher Credentialing will also be available.

### High School Student Academy

This annual full-day program for high school students takes place on Friday, March 16, 2007, from 10:30 a.m. to 5:15 p.m. The program will highlight issues of leadership, literature, and culture relevant for high school students. Participating students receive lunch along with registration for this event. (Please use the CABE registration form in this brochure to register high school students for this event.)

## Highlights

### Cyber Café

The Cyber Café, at the Exhibit Hall provides attendees a location to check email, try new software, discover new technology trends, surf the web, and also meet friends. Mini-presentations and classes at the Cyber Café offer attendees an opportunity to obtain information on a wide range of technology topics, such as web development, software instruction, and technology for second-language learners.

### CABE 2007 Artist

We welcome back Laura Vázquez Rodríguez as the CABE 2007 artist. Her artwork last year was exceptional, and we are glad she worked with us again this year. Born in Los Angeles, California and raised in the predominantly Mexican community of Pico Rivera, Laura Vazquez Rodriguez was inspired to paint at an early age. Influenced primarily by the intriguing and sometimes inconceivable, but vivacious stories told by her great grandmother, Laura's dreams began to reflect a world full of vivid colors and endless possibilities, like her grandmother's stories. Dreams that till this day inspire her to share these fantastic "impossibilities" with others. Her work can be seen in various arenas, each piece of her work is designed to evoke and stir the spirit.

### Parent Hospitality Center

The Rosalía Salinas Parent Hospitality Room, equipped with refreshments, materials, networked computers, technical assistants and trainers, will also be available exclusively for parents to give them an orientation to the conference and to facilitate their on-site and virtual networking.

### University Credit

University Credit through California State University, Long Beach is available while attending workshops, institutes and featured speakers. Registration and payment of fees of \$65.00 per continuing education unit (CEU) can be made on-site at the University Credit Booth located in the Long Beach Convention Center. (Note: to earn university credit, participants must register for university credit prior to attending any workshops or institutes). For additional information on university credit requirements, please contact Leticia Collins at (562) 985-5806 or via email at: [lcollin2@csulb.edu](mailto:lcollin2@csulb.edu)



# Standards-Aligned Professional Development

## CABE 2007

CABE 2007 allows teachers to meet the NCLB requirement that all teachers of English Learners, assigned to teach core academic subjects, will be highly qualified and demonstrate core academic subject matter competence. Teachers who attend the full four-day conference can accrue up to 20 hours (earning 5 points) towards completing the California High Objective Uniform State Standard of Evaluation (HOSSE). CABE will award teachers a transcript of completion that may be used as a part of a professional development sequence approved by local school districts. NCLB signature gathering forms to document attendance will be available at the University Credit Booth in the Long Beach Convention Center registration area. Teachers must secure the signature of individual presenters at the end of each session attended. Individual districts can provide information about the specific clock-hour requirements for their district.

**CABE 2007** features over 300 workshops, 18 featured speakers and over 30 institutes (full and half-day) in all areas of education for English Learners and other students learning a second or third language. These professional development opportunities are scheduled throughout the four days of the conference, giving participants the opportunity to attend conference activities within their areas of interest.

### Are you a teacher/para-educator of English Learners in all types of instructional settings?

Take advantage of the variety of professional development opportunities offered by expert teachers and other practitioners who share their expertise. Several professional development strands offer teachers new techniques and strategies to enhance their skills and knowledge of effective practices and materials that enrich their educational program for diverse background students.

- Content Area Curriculum
- Cooperative/Collaborative Learning
- English Language Development
- Technology/Technology Integration
- Two-Way Bilingual/Dual Immersion

### Are you an administrator or curriculum/resource teacher?

You can attend workshops and institutes in the Administration/Management, Assessment, Evaluation & Accountability and Policy/Research Strands to get the up-to-date information you need to implement effective programs for English Learners. Be sure to attend the Administrative Leadership Symposium scheduled for Thursday, March 15, 2007 and hear experts and the latest research on best practices for English Learners.

## Exciting New Strands for CABE 2007

### New Teacher Strand

This strand offers new teachers additional support and strategies to engage and enhance their skills and knowledge of effective instructional programs for English Learners.

### Children's Multicultural Literature Strand

Come and meet the authors of multicultural literature and hear their perspectives and ideas for enriching the curriculum for diverse background students.

### Health Education Strand

These workshops and institutes highlight health issues pertinent to families in the school community and how educators can open the dialogue about health topics for students and parents.

\*Please note that all scheduled dates and times in this brochure are tentative and subject to change.

### Are you a parent or a parent educator?

The Parent Involvement and Community Engagement Strand offers attendees workshops on parent involvement and leadership development to increase the voices of parents as they become active partners with schools and advocates for their children.

### Interested in Policy and Research?

The Policy Making/Legal/Political Issues, Leadership/Advocacy and Research Strands offer conference attendees the latest in cutting edge research and the policy implications facing educators and advocates implementing all types of instructional programs.

### Are you a Teacher Educator or offer professional development?

The Teacher Preparation/Professional Development Strand brings educators institutes and workshops on the latest teacher preparation and professional development theories and practices to improve the quality of teacher preparation programs.

### Do you want to ensure that instructional programs are linguistically and culturally responsive, equitable and meet the instructional needs of diverse students?

Several professional development strands offer educators and parents thought-provoking information for ensuring that instructional programs meet the linguistic, as well as, the cultural needs of students participating in our programs.

- Critical pedagogy
- Multicultural/Anti-bias/Diversity Education
- Asian and Pacific American
- Indigenous Languages
- Standard English Learners
- Special Needs Education (e.g. Gate/Special Education)
- Early Childhood Education
- Multicultural Environmental Education



# Preliminary Agenda

## Tuesday, March 13, 2007

8:00 a.m. - 4:00 p.m. Exhibitors Move-In, Long Beach Convention Center, Hall B and C

## Wednesday, March 14, 2007

7:30 a.m. - 8:30 a.m. School Site Visits Registration and Transportation to schools  
 7:30 a.m. - 4:00 p.m. Conference Registration Area, Long Beach CC  
 7:30 a.m. - 4:00 p.m. Tote Bag pick-up, Registration Area, Long Beach CC  
 8:00 a.m. - 10:00 a.m. Exhibit/Career Fair Move-In and Set-up, Long Beach CC Hall B and C  
 8:30 a.m. - 2:00 p.m. School Site Visits  
 8:30 a.m. - 3:30 p.m. CABA Joint Delegate Assembly Leadership Institute  
 9:30 a.m. - 11:00 a.m. Fieldtrip to Museum of Latin American Art (MOLAA)  
 10:30 a.m. - 12:30 p.m. Long Beach Aquarium Institute  
 10:00 a.m. - 1:00 p.m. Exhibit Hall Opening, Long Beach CC Hall B and C  
 11:00 a.m. - 3:00 p.m. Parent Hospitality Room Opening, Long Beach CC Room 101 B  
 12:00 p.m. - 1:30 p.m. Featured Speakers and Workshops  
 12:00 p.m. - 3:00 p.m. Pre-Conference Institutes  
 4:00 p.m. - 6:00 p.m. Opening General Session, Long Beach CC Grand Ballroom – **Keynote Address: Elena Featherston**  
 7:00 p.m. - 11:00 p.m. Membership Reception and Dance

## Thursday, March 15, 2007

7:30 a.m. - 5:00 p.m. Conference Registration Long Beach CC  
 7:30 a.m. - 5:00 p.m. Tote Bag pick-up Long Beach CC  
 8:00 a.m. - 5:00 p.m. Parent Hospitality Room, Long Beach CC Room 101 B  
 8:30 a.m. - 10:30 a.m. General Session, Grand Ballroom – **Keynote Address: Jonathan Kozol**  
 9:00 a.m. - 6:00 p.m. Exhibits/Career Fair, Long Beach CC Hall B and C  
 10:45 a.m. - 12:15 p.m. Administrative Leadership Symposium  
 10:45 a.m. - 12:15 p.m. Workshops and Featured Speakers  
 10:45 a.m. - 5:15 p.m. Full Day Institutes  
 12:30 p.m. - 2:00 p.m. Educator of the Year Awards Luncheon, Long Beach CC Grand Ballroom  
 2:15 p.m. - 3:45 p.m. Workshops and Featured Speakers  
 2:15 p.m. - 5:15 p.m. 1/2 Day Institutes  
 4:00 p.m. - 5:00 p.m. CABA Membership Meeting  
 4:00 p.m. - 5:30 p.m. Workshops and Featured Speakers

## Friday, March 16, 2007

7:30 a.m. - 4:00 p.m. Conference Registration Long Beach CC  
 7:30 a.m. - 4:00 p.m. Tote Bag pick-up Long Beach CC  
 8:00 a.m. - 5:00 p.m. Parent Hospitality Room, Long Beach CC Room 101 B  
 8:30 a.m. - 10:30 a.m. General Session, Grand Ballroom – **Keynote Address: Ron Takaki**  
 9:00 a.m. - 5:00 p.m. Exhibits/Career Fair, Long Beach CC Hall B and C  
 10:45 a.m. - 12:15 p.m. Workshops and Featured Speakers  
 10:45 a.m. - 5:15 p.m. Full Day Institutes  
 10:45 a.m. - 5:15 p.m. High School Student Academy  
 12:30 p.m. - 2:00 p.m. Parent of the Year and Student Essay Winners Luncheon, Long Beach CC Grand Ballroom  
 2:15 p.m. - 5:15 p.m. 1/2 Day Institutes  
 2:15 p.m. - 3:45 p.m. Workshops and Featured Speakers  
 4:00 p.m. - 5:30 p.m. Workshops and Featured Speakers  
 7:00 p.m. - 9:00 p.m. Seal of Excellence Awards Banquet  
 9:00 p.m. - 12:00 a.m. CABA Seal of Excellence Dance

## Saturday, March 17, 2007

7:30 a.m. - 10:30 a.m. Conference Registration, Long Beach CC  
 7:30 a.m. - 10:30 a.m. Tote Bag pick-up, Long Beach CC  
 8:00 a.m. - 10:30 a.m. Parent Hospitality Room, Long Beach CC Room 101 B  
 9:00 a.m. - 10:30 a.m. Closing General Session - **Keynote Address: Ruben Martinez**  
 9:00 a.m. - 2:00 p.m. Exhibits/Career Fair, Long Beach CC Hall B and C  
 10:45 a.m. - 1:15 p.m. Literacy and Music Event

# Pre-Conference Events

## Conference Registration

Registration opens at 7:30 a.m. and closes at 4:00 p.m. on Wednesday, March 14, 2007. Participants, who are pre-registered and received their conference confirmation letters in the mail, may go directly to the Long Beach Convention Center Registration area to receive their conference registration cards. Other participants, who are pre-registered but did not receive their confirmation letter in the mail, must bring and show a photo ID at the Registration area to receive their conference registration cards. New Registrants, that are not pre-registered, are invited to register for the conference at the "New Registration" area. Registration will continue to be available throughout the four days of the conference. After receiving their conference registration card participants will use the card to pick up the Tote Bag and conference materials at the Tote Bag claim area.

## School Site Visits

(8:30 a.m. - 2:00 p.m.)

Be sure to visit exemplary programs for English Learners—e.g., Two-Way/Dual Language Immersion, ELD. Participants have an opportunity to see these programs in action. Buses depart from the Long Beach Convention Center at 8:30 a.m. and return by 2:00 p.m. in time to participate in the Opening General Session. Please indicate participation and selection of school site (first and second choice—see descriptions of program types on page 11) for this event on the CABA 2007 Conference Registration Form in the appropriate section of this brochure. (Please note that there is a fee of \$30 to participate.)

## Joint Delegate Assembly (JDA)

(8:30 a.m. - 3:30 p.m.)

CABA chapter leaders and delegates come together to learn, network, share best practices, and plan for regional and chapter activities at the local level at this annual JDA session. Participants receive an overview of the workshops, featured speakers, and institutes featured in the CABA Leadership and Advocacy strand. (Please note: For CABA Chapter Presidents/Designees only.)

## Exhibit Hall Opening

(11:00 a.m. - 3:00 p.m.)

Leisurely visit the Long Beach Convention Center Hall B and C before the Opening General Session, when the conference formally opens. Participants have the opportunity to preview materials and other events at the Exhibitor/Career Fair as a first day, pre-conference activity.

## Museum of Latin American Art (MOLAA)

(9:30 a.m. to 12:30 p.m.)

MoLAA's mission is to educate the public about contemporary Latin American fine art (by artists who have lived and worked in Latin America since WWII) through the presentation of a significant permanent collection, dynamic exhibitions and related cultural and educational programs. The Museum of Latin American Art (MoLAA) in Long Beach, California is the only museum in the western United States that exclusively features contemporary Latin American art. Through the utilization of its permanent collection, traveling exhibitions, and programs, MoLAA educates a diverse Southern California audience about contemporary Latin American art. Join us for this outstanding pre-conference event. Space is limited so register right away. Registration form is available in this packet.

## Long Beach Aquarium of the Pacific Institute

(10:30 a.m. to 12:30 p.m.)

The Aquarium of the Pacific would like to take you on a voyage through the largest body of water on the planet, the Pacific Ocean. From warm tropical reefs to the frigid waters of the North Pacific we will introduce animals that live here and explore the adaptations that help them to survive. This workshop will introduce hands-on lessons that will show you how to bring the ocean science to your students.

## Membership Reception and Dance

(7:00 p.m. to 11:00 p.m.)

Don't miss out! After the Opening General Session, CABA welcomes all CABA members to join us at the annual Membership Reception/Dance in their honor. Membership Reception and Dance will be held at the Hyatt Regency, Long Beach. Meet the CABA Board and Chapter Presidents, network with other members, eat great food, dance and just have fun!





Wednesday March 14, 2007

## Pre-Conference Featured Speakers



### Laurie Olsen

**"Don't Let Data Undo You! Dilemmas and Solutions for Bilingual Programs"**

Learn about common data pitfalls, and how to avoid misuses of CELDT and CST by decision makers who are determining your program's future.

Laurie Olsen is the Executive Director of California Tomorrow, a non profit research, advocacy and technical assistance organization committed to building a fair and inclusive multicultural society.



### Concha Delgado Gaitán

**"Creating Culturally Responsive Learning Settings"**

This presentation focuses on the issue of culture and learning, and how they intersect in the classroom social context and curriculum content.

Her ethnographic research asserts a strong commitment to social justice, cultural understanding in learning settings, and education in general.



### Mary Cappellini

**"Helping English Learners Construct Meaning While Reading"**

This presentation will provide teachers with new insights into helping English Learners of all language levels and reading levels become better

readers. Mary Cappellini is a National Educational Consultant and a long-time CAFE member and educator. She is a published children's book and professional book author, and her new book *Balancing Reading and Language Learning: A Resource for Teaching English Learners K-5*, published by Stenhouse, highlights her extensive work with ELs over the last 20 years, both in her own classroom and the classrooms of teachers throughout California.



### Michael Apple

**"Understanding and Interrupting the Right in Education"**

Michael W. Apple is the John Bascom Professor of Curriculum and Instruction and Educational Policy Studies at the University of Wisconsin, Madison

and was selected as one of the fifty most important educational scholars in the 20th Century. Apple will first critically analyze the limits and possibilities of engaging in more socially and culturally democratic school reforms during this period and will point to movements both here in the United States and elsewhere that may give us reason for hope.

## Pre-Conference Institutes

### Choose Your Own Adventure: Student Writing with a Biliteracy Twist of Technology

Writing, Biliteracy, and PowerPoint@...what a team! Learn how to implement a standards-based writing assignment using PowerPoint@ as the final tool. This lesson is based on the 1980's children's novels, *Choose Your Own Adventure*. Participants will learn hands-on how to set up this special kind of PowerPoint@ presentation and will receive a template ready to use with students. Student examples will be shown.

Presenter: Gil Díaz and April Moore, California Technology Assistance Center

### A Forum on Educational Justice for EL's in the Mainstream Classroom

This is a proactive forum unpacking the issue of academic success for English Learners with the social justice lens. The presenters will present individual papers on various aspects of assuring educational justice for EL's in the mainstream classroom.

Presenters: Margaret Solomon, Jose Lalas, Dr. Hank Rubin and Dr. Carol Franklin, University of Redlands

### Two-way Bilingual (Dual) Immersion Programs: An Overview

Two-way Bilingual (Dual) Immersion (TWBI) Programs are additive bilingual programs designed to promote bilingualism, biliteracy and cross-cultural understanding among English learners and English proficient students.

Presenter: Marcia Vargas, Director 2-Way CAFE

### Using Promotores to Impact the Health Access and Status of Underserved Latino Communities

This presentation will provide an in-depth look at the use of "promotores de salud" (peer health educators), and examine the different types of peer education projects, the health issues involved, and the promise of such methods in changing long term health access and status issues plaguing linguistically isolated and underserved Latino communities.

Presenters: Britt Rios-Ellis Ph.D., Ana Carricchi, M.A. and Melawhy Garcia, NCLR/CSULB Center for Latino Community Health

Wednesday March 14, 2007

### State Preschool Standards for Whom? High Stakes Implications for Latino English Learners and Early Childhood Professionals Who Serve Them

Early learning standards are in place across the country and are in development for California, however, the implications for the education of Latino English Learners--the issues of first-language and second language acquisition, culture and family values--have remained largely unexamined. We argue that new barriers to EL children will result.

Presenter: Antonia Lopez, National Council of La Raza

### Padres Líderes -Trabajando en Colaboración con las Escuelas

Este instituto presentará el programa para el desarrollo de liderazgo de padres de familia llamado "APPLE" del Proyecto INSPIRE. Este proyecto promueve la colaboración entre padres de familias y el personal docente en las escuelas de sus hijos. Esta participación de los padres en la escuela es importante para el éxito escolar de los alumnos, especialmente para aprendices del inglés.

Ponentes: Gloria Inzunza Franco y Yolanda Ronquillo

### Leadership Education for Asian Pacific (LEAP) "Twenty First Century Leader: Surviving and Thriving in the 3rd Millennium"

What is a Leader? In this workshop, the participants are guided through an exploration of LEAP's leadership framework based on a new leadership paradigm -- one where individuals can keep their values and have the skills and ability to operate effectively in a diverse environment.

Presenter: JD Hokoyama, Leadership Education For Asian Pacifics

### Engaging Preschool English Learners in Culturally Relevant Oral Language and Emergent Literacy Activities

This session presents a culturally responsive approach to engage preschool English learners in meaningful language and literacy activities that support language learning and emergent literacy development. These activities provide a base for creating culturally responsive curriculum that values children's home language and culture.

Presenters: Irene Villanueva, Rebeca Valdivia and Ann-Marie Wiese, WestEd Center for Child and Family Studies

## CAFE 2006 Voices

"One of the most informative, proactive, hope filled, and practical experiences. The wisdom shared, the stories told, and the depth of knowledge demonstrated contributed to this phenomenal excellence."

\*Please note that all scheduled dates and times in this brochure are tentative and subject to change.

## Opening General Session Keynote Address



### Elena Featherston

**"Lines of Communication: Linguistic Empowerment (for all)"**  
Opening General Session (4:00 p.m. - 6:00 p.m.)

Elena Featherston is an educator, writer, filmmaker, and social critic challenging inequity on interconnected cultural fronts. A political and social visionary, she has lectured throughout the United States and Europe since 1982. She states that during most of the 20th century U.S. educators related to bilingual education as teaching English fluency to non-native speakers; the challenge of the 21st century is to produce a nation of multilingual, multicultural world citizens. To meet the challenge of a shrinking, increasingly complex world our definition of bilingual education must expand to include all students.





# Registration Information

Take advantage of the on-line discount and avoid on-site registration lines. When you submit your CABA 2007 registration(s) **early**, either on-line or by mail, your registration is processed in advance.

Save \$\$\$  
Meet the  
Pre-Registration deadline.  
Must be postmarked by  
December 31, 2006

- If you register (either on-line or by mail) on or before **December 31, 2006**, you are assured of receiving your registration confirmation by mail to the address you provide on the registration form **between January 31, 2007, and February 15, 2007**.
- If you register **between January 1, 2007, to February 15, 2007**, you will receive your registration confirmation letter on or before March 1, 2007.
- If you register on or **after February 15, 2007**, you will not receive a registration confirmation from CABA. You must bring and show your photo ID at the registration area to receive your conference card.

## Important- Please Note:

- Conference Registration Card must be worn for admittance to all conference events, including workshops, institutes, exhibit hall, luncheons, and evening events.
- If Conference Registration Card is lost or forgotten, please be advised that requests for replacement cards prior to or during the conference will be honored; but charged the full price paid when registration was first submitted. There will be NO EXCEPTIONS to this policy.

**School site visit reservations** must be made at the time of registration. Please read your registration form thoroughly, as certain restrictions and penalties do apply. Please select and indicate #1 and #2 choice of school program. Page 11 provides program descriptions and the number assigned to each program type.

## Mailing Instructions for Conference Registration

Please fill out the attached registration form completely and enclose payment.

Pre-registration must be postmarked **no later than December 31, 2006**.

Mail registration to:

CABA 2007 Registration  
P.O. Box 51204  
Los Angeles, California 90051-5504

**Please Note:** If you do not mail the registration form to the address above, it cannot be processed. Registration inquiries may be made to CABA at (866) 814-CABA (2223), or via e-mail at [customerservice@bilingualeducation.org](mailto:customerservice@bilingualeducation.org).

**Staff Development Day(s)** For those school districts designating CABA 2007 as "Staff Development Day(s)," a registration incentive of one free registration (excluding meals) is available to groups submitting 25 registrations. These registrations must all be the same (either a full four-day pass or a one-day pass) regardless of the category: member, non-member, administrator, teacher, para-educator, parent, or student. All 25 registrations must be submitted on the same purchase order. For further information see item #12 of "Registration Instructions" located in this brochure.

Save time and money  
Using On-line Registration

Registration on-line—now available at [www.bilingualeducation.org](http://www.bilingualeducation.org)

- Please note that the last day to register on-line is March 9, 2007. However if you register on-line between January 1, 2007 - March 9, 2007, you are still eligible for up to a \$20 discount.
- **Join CABA Today!** Save on conference fees when you become a member. You can also renew your membership on-line or use the on-line registration process to check your membership status.
- It's fast and user friendly! Your registration is processed via a secure server. Our secure site accepts Visa, MasterCard, American Express, and School District/Organization Purchase Orders.

## Conference Registration Form

CABA 2007

Extra Savings! Register online. Just visit [www.bilingualeducation.org](http://www.bilingualeducation.org)

CABA 2007 • 32nd Annual Conference • Educating Every Student: Investing in Tomorrow – TODAY  
March 14-17, 2007 • Long Beach Convention Center. **Pre-Registration Postmark Deadline: December 31, 2006**

### REGISTRANT'S INFORMATION:

Please read the reverse side of this form prior to completing

First Name MI Last Name  
Please check one: ☐ Teacher ☐ Administrator ☐ Parent  
☐ Para-Educator ☐ Student

Affiliation (will appear on Conference Registration Card)

Mailing Address (Please note: All registration materials will be mailed to this address)

City State Zip  
( ) ( )  
Work Telephone No. Home Telephone No.

Email Address

☐ I am a current CABA member through March 31, 2007 (See #4 in the next column if you would like to join or renew your CABA membership.)

My Membership ID # \_\_\_\_\_

☐ YES, I would like interpretation for General Sessions and Keynote Speakers. LANGUAGE: \_\_\_\_\_

☐ NO, I would not like my name and address given to conference exhibitors on a one time basis for catalogs and materials.

☐ ADA, Yes. (See Item #2 on the reverse side)

### CONFERENCE REGISTRATION FEES

#### 1. REGISTRATION:

	Registration Fee	Pre-Registration Fee Postmarked by 12/31/06	On-Line Payment after 12/31/06	On-Line Payment after 12/31/06
* (M)= Member (N-M)= Non-Member				
Full 4 Day Pass				
<input type="checkbox"/> (A) Teachers/Administrators (M)	\$435	\$315	\$295	\$415
<input type="checkbox"/> (B) Teachers/Administrators (N-M)	\$535	\$415	\$395	\$515
<input type="checkbox"/> (C) Parents, Para Educators, Students (M)	\$280	\$170	\$160	\$270
<input type="checkbox"/> (D) Parents, Para Educators, Students (N-M)	\$295	\$185	\$175	\$285

One Day Pass Day of Attendance (Mark only one): ☐ Wed. ☐ Thur. ☐ Fri.

<input type="checkbox"/> (E) Teachers/Administrators (M)	\$200	\$170	\$160	\$190
<input type="checkbox"/> (F) Teachers/Administrators (N-M)	\$255	\$225	\$215	\$245
<input type="checkbox"/> (G) Parents, Para Educators, Students (M)	\$125	\$105	\$100	\$120
<input type="checkbox"/> (H) Parents, Para Educators, Students (N-M)	\$140	\$120	\$115	\$135

<input type="checkbox"/> (I) Friday Institute for H.S. Students Only (box lunch included with registration fee)	\$ 55	\$ 45	\$ 40	\$ 50
<input type="checkbox"/> (J) Saturday Only (All Categories)	\$ 55	\$ 45	\$ 40	\$ 50

☐ (K) Staff Development Day (Please see item # 12 on the reverse side for eligibility requirements for Staff Development Day Pass)

Total Registration Fees \$

### 2. EVENT TICKETS:

Due to limited capacity, meal tickets may not be available on-site.

☐ (ALS) Thur., 3/15/2007 Administrative Leadership Symposium. I am an Administrator and will be attending this event -----FREE

☐ (EYL) Thur., 3/15/2007 Educator of the Year Luncheon-----\$40

☐ (SPL) Fri., 3/16/2007 Student & Parent of the Year Luncheon -----\$40

☐ (SEB) Fri., 3/16/2007 Seal of Excellence Banquet -----\$60

☐ YES, I would like vegetarian meals.

Total Event Tickets \$

### 3. SCHOOL SITE VISITS

☐ Wed., 3/14/2007 – School Site Visit -----\$30  
Indicate program of preference (See detailed school site programs on page 11 for descriptions and program number.)

1st Choice: \_\_\_\_\_

2nd Choice: \_\_\_\_\_

Total School Site Visit Fees \$

### 4. CABA MEMBERSHIP

To take advantage of discounted registration fees, make sure your CABA membership status is current through March 31, 2007.

☐ New ☐ Renewal

☐ Administrator -----\$75

☐ Teacher -----\$55

☐ Para Educator -----\$30

☐ Parent/Community (See Item #1 on the reverse side) -----\$15

☐ Student (See Item #1 on the reverse side) -----\$15

Total Membership Fees \$

GRAND TOTAL \$

### 5. PAYMENT METHOD

Check Number (Please make all checks payable to CABA)

P.O. No. \_\_\_\_\_

School District \_\_\_\_\_

MasterCard/Visa/AMEX No. \_\_\_\_\_

Exp. Date \_\_\_\_\_

Signature \_\_\_\_\_

Date \_\_\_\_\_



Please read the reverse side for "Instructions and Information" and return with total payment to:  
P.O. Box 51204, Los Angeles, CA 90051-5504

Postmark deadline: **December 31, 2006**  
For registration information, please contact: 1-866-814-CABA  
[Customerservice@bilingualeducation.org](mailto:Customerservice@bilingualeducation.org)

## Pre-Conference Activity

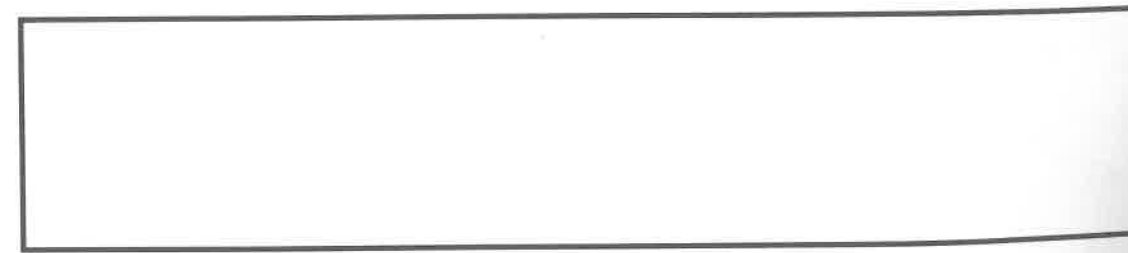
### Museum of Latin American Art

628 Alamitos Ave.  
Long Beach, CA 90802  
562.437.1689  
www.molaa.org Email: info@molaa.org

# MOLAA



MoLAA's mission is to educate the public about contemporary Latin American fine art (by artists who have lived and worked in Latin America since WWII) through the presentation of a significant permanent collection, dynamic exhibitions and related cultural and educational programs. The Museum of Latin American Art (MoLAA) in Long Beach, California is the only museum in the western United States that exclusively features contemporary Latin American art. Through the utilization of its permanent collection, traveling exhibitions, and programs, MoLAA educates a diverse Southern California audience about contemporary Latin American art. Join us for this outstanding pre-conference event. Space is limited so register right away. Registration form is available in this packet.



## CABE 2007 Registration Instructions

### 1. REGISTRATION FORM

Use a separate "Registration Form" for each registrant. If more forms are needed, please make photocopies (front & back) or order additional copies from CABE. You may also download the forms at [www.bilingualeducation.org](http://www.bilingualeducation.org). **Only parents not employed by any school district may register as a "Parent".** The "Student" rate only applies to students currently enrolled in an undergraduate degree program or high school. CABE may ask for proof if necessary. Retain a copy of both sides of this form for your records.

### 2. AMERICANS WITH DISABILITIES ACT

Under Provisions of Title I of the Americans with Disabilities Act, please check if you require any special arrangements. You will be contacted by phone or at the address you list to make specific arrangements/and or accommodations.

### 3. REGISTRATION PROCESSING

Please type or print clearly the information requested. Information from this form will be used to print conference cards. Additionally, due to delays that can occur in school district mail delivery systems, **use an address which provides the most expeditious means to mail your confirmation and conference materials.** Send your payment and form(s) to CABE 2007 Registration, P.O. Box 51204, Los Angeles, CA 90051-5504. You will be mailed registration status information prior to February 15, 2007.

### 4. POSTMARK DEADLINE

Pre-Registration Postmark Deadline is December 31, 2006. On-line Registration deadline is March 9, 2007. In order to allow time to process all applications and mail conference confirmation to all pre-registrants prior to February 15, 2007, **the postmark deadline will be strictly adhered to.** We encourage you to pre-register to avoid waiting in line and additional costs.

### 5. PAYMENT REQUIREMENTS

Avoid any delays, registration will not be processed unless it is accompanied with payment in full. **Make checks payable to CABE.** Purchase orders should be used only when absolutely necessary and require payment within 30 days. MasterCard, Visa and American Express will be accepted as long as the complete number, expiration date and signature are included on the front of this form. Purchase orders and institutional checks for more than one person must be accompanied by a separate registration form for each individual and the purchase order must list each attendee's name. Requisition forms are not an acceptable form of payment and will not be processed. **A \$50 charge will be assessed for all returned checks.**

### 6. REQUESTS FOR CANCELATION REFUNDS

All requests for refunds must be made in writing and submitted to CABE Headquarters prior to January 31, 2007. Refunds will be processed and mailed out following the conference. A 20% processing fee will be assessed on all requests. **There will be no refunds or exchanges for meal or event tickets. Refund requests postmarked after January 31, 2007, will not be honored.**

### 7. REPLACEMENT OF CONFERENCE REGISTRATION CARDS AND TICKETS

Requests for replacement of conference cards and event tickets, for any reason, will be charged at the original full registration price. There is no refund for replaced conference cards and tickets. **NO EXCEPTIONS.**

### 8. SUBSTITUTIONS

Names will be substituted on registration forms only upon receipt of a written request. If a conference confirmation letter has been received, it must be returned with the request. **No substitutions will be accepted after January 31, 2007.**

### 9. MEMBERSHIP VERIFICATION

Please note: In order to receive a membership discount, each conference participant submitting member level fees must be a member in good standing through March 31, 2007. If it is determined that membership is not current, conference attendee will be invoiced for either membership dues owed or the balance of the non-member rate for the conference.

### 10. ONE-DAY PASSES

For individuals unable to attend for more than one day, you may purchase a One-Day Pass. Please indicate which day you will be attending. If the day is not indicated, we will assume that you will be attending Thursday, March 15, 2007, and will process as such. One-day passes can only be used for the designated date.

### 11. COMPLIMENTARY PASSES

If you are entitled to complimentary registration (Presenters and Planning Committee) **DO NOT COMPLETE THIS FORM.** Please contact the CABE Office via email at [info@bilingualeducation.org](mailto:info@bilingualeducation.org) and request a "Form for Complimentary Registration".

### 12. STAFF DEVELOPMENT DAY INCENTIVE

For those school districts designating CABE 2007 as "Staff Development Day(s)", a registration incentive of one free registration (excluding meals) is available to groups submitting 25 "like" registrations. Like registrations refer to either full four-day passes or one-day passes, not which category they fall into (member, non-member, teacher, administrator, para-educator or parent...). All 25 registrations must be submitted on the same Purchase Order. To take advantage of this opportunity, please submit a registration form with the staff member's name who will use the pass, and mark the appropriate box on the registration form.

### 13. SCHOOL SITE VISITS

Buses for School Site Visits will depart from Long Beach Convention Center at 8:30 a.m. **sharp** on Wednesday, March 14, 2007, and return by 2:00 p.m. Confirmation letters and additional information will be sent. Spaces are limited and will be filled in the order received. Passes will not be available on-site and are **not refundable.** Please review the list of programs on page 11. Choose two (2) programs, which you would like to visit and list their number on the Registration Form as a first choice and second choice.



# Pre-Conference Activity

## Registration Form

### Pre-Conference Extended Learning Opportunity

CABE 2007 is providing an Extended Learning Opportunity for conference participants to visit an interesting attraction in Long Beach. The day trip will all take place on Wednesday, March 14, 2007.

All participants will be picked-up and returned to the Long Beach Convention Center, providing enough time to attend the General Opening Session starting at 4:00 p.m. Space is limited and we request that you send us your completed registration form and check/money order for this event by **January 15, 2007**. **Please note there will be no refunds for cancellations. No exceptions!** This activity is open to conference participants only.

Number of Tickets	Event	Price	Total
	<b>Museum of Latin American Art</b> 8:30 - 9:00 Registration 10:00 - 12:00 Tour	<b>\$25.00/ person</b>	
Total for All Event			\$

First Name		Last Name	
Street Address			
City		State	Zip
Home Tel		Work Tel	
Email			

**Please Note:**

Buses will leave **PROMPTLY** at scheduled time, any person arriving late **WILL NOT** be given a refund. Tickets for these events are not included with your registration materials, they will be mailed out separately. Include your check or money order with this registration form.

Please send completed registration form and total payment to:  
**CABE 2007, Pre-Conference Extended Learning Opportunity**  
16033 E. San Bernadino Road, Covina, CA 91722-3900  
For registration information, please contact:  
Tel:626-814-4441 Fax: 626-814-4640 Email: [info@bilingualeducation.org](mailto:info@bilingualeducation.org)

## Housing Information CABE 2007

CABE 2007

March 14 - 17, 2007 Long Beach Convention Center Long Beach, CA

The California Association for Bilingual Education is pleased to provide CABE 2007 attendees with this information to assist with housing for the March 14-17 2007, conference. The following hotels were carefully selected to meet the diverse needs of our conference participants and to simplify your search. Most hotels offer conference rates 3 days before and 3 days after conference based on availability.

	Single	Double	Triple/Quad	Other
❖❖❖ Coast Long Beach Hotel 700 Queensway Drive, Long Beach, CA 90802 Tel. No.: 562/435-7676 or 800/663-7676	\$115.00	\$115.00		\$135.00 Bay View
* Courtyard by Marriott 500 E. 1st Street, Long Beach, CA 90802 Tel. No.: 562/435-8511 or 800/321-2211	\$137.00	\$137.00		
❖❖❖ Hilton Long Beach 701 W. Ocean Blvd., Long Beach, CA 90831 Tel. No.: 562/983-3400 or 800/445-8667	\$165.00	\$165.00	\$190.00/215.00	
* Hyatt Regency Long Beach 200 South Pine Avenue, Long Beach CA 90802 Tel. No.: 562/491-1234 or 800/233-1234	\$160.00	\$160.00	\$185.00/210.00	
* Renaissance Long Beach Hotel 111 E. Ocean Blvd., Long Beach, CA 90802 Tel. No.: 562/437-5900	\$156.00	\$156.00	\$171.00/185.00	
* The Westin Long Beach 333 E. Ocean Blvd., Long Beach, CA 90802 Tel. No.: 562/436-3000 or 800/937-8461	\$155.00	\$155.00	\$175.00/195.00	

Confirm purchase order/Master account acceptance policy with hotel.

\* Within walking distance ❖ Not within walking distance ❖ Union Hotel

**Accommodations:**

Guestroom reservations at the "official hotels" are handled on a first-come, first-served basis. For reservations made on or before February 12 2007, conference participants can take advantage of special rates at the listed hotels for a limited number of rooms. Please review the following information and make your hotel selection. Contact hotels directly for reservations.

Complimentary ground transportation provided between hotels and Convention Center. All Conference sessions will be held at the Long Beach Convention Center and at surrounding hotels.

**Reservations must be made directly with the hotel of your choice.**

**For your use when making your reservation**

Hotel \_\_\_\_\_  
Spoke with \_\_\_\_\_ Date \_\_\_\_\_  
Confirmation No. \_\_\_\_\_

Please mention your participation in the CABE 2007 Conference when making your reservation in order to receive conference rates.

**Guaranteed Reservations Only:**

Hotels require a deposit by credit card at the time reservations are made.

**Deadlines:**

We recommend reservations be made by **February 12, 2007**, however, most hotels will continue to accept reservations subject to availability.

**Changes & Cancellations:**

Confirm policy with hotel.

**Please keep this information for use when checking in**

Date In \_\_\_\_\_ Date out \_\_\_\_\_  
Room Type \_\_\_\_\_  
Note \_\_\_\_\_

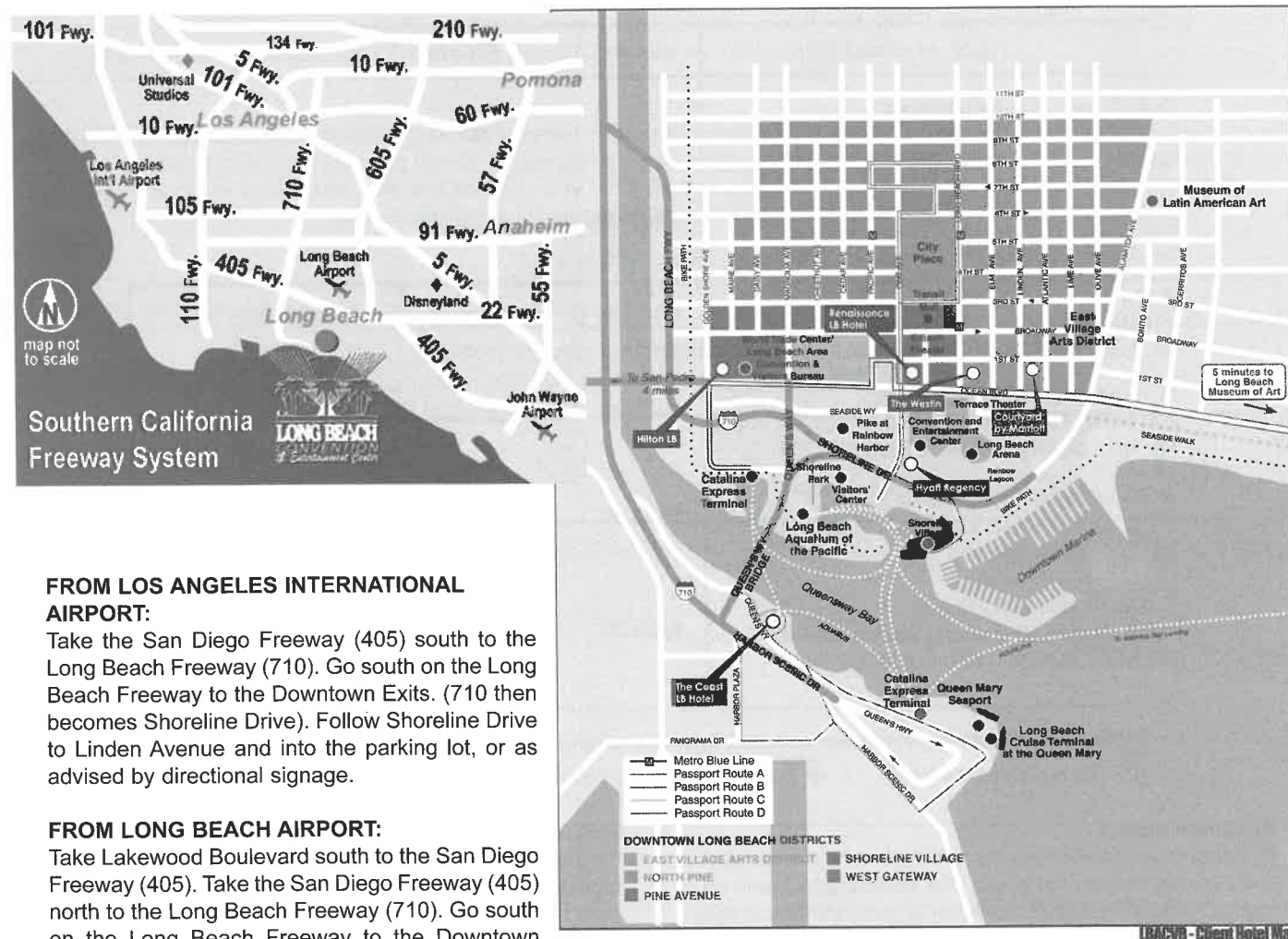


## CABE 2007 Map and Direction

### Long Beach Convention Center

300 E. Ocean Blvd., Long Beach, California 90802  
Phone: (562) 436-3636 FAX: (562) 436-9491

March 14-17, 2007



#### FROM LOS ANGELES INTERNATIONAL AIRPORT:

Take the San Diego Freeway (405) south to the Long Beach Freeway (710). Go south on the Long Beach Freeway to the Downtown Exits. (710 then becomes Shoreline Drive). Follow Shoreline Drive to Linden Avenue and into the parking lot, or as advised by directional signage.

#### FROM LONG BEACH AIRPORT:

Take Lakewood Boulevard south to the San Diego Freeway (405). Take the San Diego Freeway (405) north to the Long Beach Freeway (710). Go south on the Long Beach Freeway to the Downtown Exits. (710 then becomes Shoreline Drive). Follow Shoreline Drive to Linden Avenue and into the parking lot, or as advised by directional signage.

#### FROM THE JOHN WAYNE (ORANGE COUNTY) AIRPORT:

Take the San Diego Freeway (405) north to the Long Beach Freeway (710). Go south on the Long Beach Freeway to the Downtown Exits. (710 then becomes Shoreline Drive). Follow Shoreline Drive to Linden Avenue and into the parking lot or as advised by directional signage.

#### FROM SOUTHERN ORANGE COUNTY:

Take the Santa Ana Freeway (5) north to the San Diego Freeway (405). Take the San Diego Freeway (405) north to the Long Beach Freeway (710). Go south on the Long Beach Freeway to the Downtown Exits. (710 then becomes Shoreline Drive). Follow Shoreline Drive to Linden Avenue and into the parking lot or as advised by directional signage.

#### FROM NORTH ORANGE COUNTY AND THE VALLEYS:

San Gabriel & Pomona Valleys take the Orange Freeway (57) or San Gabriel Freeway (605) to the Riverside Freeway (91) to the Long Beach Freeway (710). Go south on the Long Beach Freeway to the Downtown Exits. (710 then becomes Shoreline Drive). Follow Shoreline Drive to Linden Avenue and into the parking lot or as advised by directional signage.

## School Site Visits

The following programs will be available for School Site Visits. Please make your selection and enter your choice on the conference registration form. (e.g., Elementary Dual Immersion: 3a)

### 1. General Programs/Services for Second Language Learners

#### Language Assessment Center (K-12)

The assessment center is the location specifically created for identification and placement services for English Learners. The assessment information is provided to schools, ensuring English learners are placed in an instructional program that meets their linguistic/instructional needs. Parents are assisted, in their primary language if necessary, in completing the enrollment process.

The Migrant Education Program is housed at the assessment center. The program provides supplemental services designed to support high quality and comprehensive educational programs for migrant children to help reduce the educational disruption and other problems that result from repeated moves.

### 2. Family Literacy (K-12)

#### Parent Resource Center

Family Literacy Programs are intergenerational literacy programs that involve parents and their children. The program's focus is on literacy strategies parents and other adults can use at home to develop and maintain oral language and literacy skills. Parents also participate in trainings designed to develop and augment parenting skills.

### 3. Elementary Programs

a. **Two-Way Bilingual/Dual Immersion:** These programs have a strong, comprehensive instructional design that includes English Language Development, primary language instruction and SDAIE (Specially Designed Academic Instruction in English/other non-English language). There are two language groups represented in the Two-Way classroom: English learners and English proficient students who serve as language models for each other during the instructional day. The goal of this program is to promote high levels of bilingualism/biliteracy in two languages.

b. **Structured English Immersion (SEI):** Instruction is entirely in English, incorporating a strong and purposeful English Language Development program and sheltered English strategies. Primary language support may be provided through text books and appropriate strategies including Preview/Review methods.

c. **Structured English (SE) and Transitional Structured English (TSE):** Students continue to learn more difficult listening, speaking, reading and writing skills in English through English Language Arts and English Language Development (ELD) instruction. Students receive instruction and primary language support, if reasonably possible and as needed, in math, science and history/social science from specially trained teachers using SDAIE strategies.

### 4. Middle School Programs

a. **Two-Way Bilingual/Dual Immersion:** This program is for both English learners and English only students. Students interact as language models for each other. The goal for all students is that they learn English and meet grade-appropriate academic achievement standards for grade promotion and graduation; and become bi-literate and multi-cultural scholars.

b. **Structured English (SE) and Transitional Structured English (TSE):** Students continue to learn more difficult listening, speaking, reading and writing skills in English through English Language Arts and English Language Development (ELD) instruction. Students receive instruction and primary language support, if reasonably possible and as needed, in math, science and history/social science from specially trained teachers using SDAIE strategies.

### 5. High School Programs

a. **Heritage Language: Khmer for Khmer Speakers and Spanish for Spanish Speakers**

These programs are designed to meet the unique instructional needs of heritage language speakers of Spanish and Khmer who typically have high oral/aural proficiency, combined with under-developed or non-existent literacy. The programs also build upon the cultural literacy of the students.

b. **Structured English (SE) and Transitional Structured English (TSE):** Students continue to learn more difficult listening, speaking, reading and writing skills in English through English Language Arts and English Language Development (ELD) instruction. Students receive instruction and primary language support, if reasonably possible and as needed, in math, science and history/social science from specially trained teachers using SDAIE strategies.





# Information

## Hotel Reservations

All hotels listed on the CABE 2007 Housing Form offer conference rates. Some hotels are conveniently located within walking distance of conference activities. Complimentary ground transportation will be offered for hotels that are not within walking distance. Conference participants can make CABE 2007 hotel reservations directly with the participating conference hotels in Long Beach. Refer to the enclosed housing form for rates and deadlines. Submit your reservations in a timely manner to secure conference rates at the hotel of your choice.

## Air Travel

CABE recommends that conference participants visit [www.alaskaair.com](http://www.alaskaair.com) to determine if your travel itinerary is available through Alaska Airlines to review flight options and to obtain the best available air fare. Another recommended travel site is [www.expedia.com](http://www.expedia.com). The Long Beach Airport is accessible to JetBlue Airways, US Airways/America West and Delta. Remember, booking flights early allows for lower rates!

## After Conference/Weekend Activities

If you and your family would like to spend the weekend in Long Beach, check for availability of the special conference hotel rates with your hotel. For information on family activities in and near downtown Long Beach visit [www.lbchamber.com](http://www.lbchamber.com). The following is a partial list of the after conference/weekend activities available in the Long Beach area.

## Car Rental

Hertz Corporation has arranged special discounted rates for all conference attendees. Present this exclusive code CV#03XS0001 to take advantage of special rates, which include unlimited mileage. To make reservations on-line go to [www.hertz.com](http://www.hertz.com) or by calling Hertz at 1-800-654-2240. Please note: Minimum rental age is 25 (exceptions apply).

## Auto Travel and Parking

See the enclosed map for details on directions to the conference. Parking is available at the Long Beach Convention and Entertainment Center parking lots and garages. The parking structure hours are from 6:00 a.m. – 6:00 p.m., Mon. – Fri. For additional information, visit their website at [www.longbeachcc.com](http://www.longbeachcc.com).

## Long Beach Transit

CABE 2007 attendees can also use the Long Beach Transit with convenient stops between the Long Beach Airport and downtown locations near the Long Beach Convention and Entertainment Center. Many hotels provide complimentary shuttle service to and from the Long Beach Airport. Check with your hotel for availability and schedules. Save on parking—Use the Metro Blue Line to Long Beach. It is available if you are coming from outside the Long Beach area. The final stop is near the Long Beach Convention Center. For advance planning, visit [www.lbtransit.com](http://www.lbtransit.com) and [www.mta.net](http://www.mta.net).



## Shopping

- Shoreline Village
- City Place

## Family Fun

- Alfredo's Beach Club
- Pike at Rainbow Harbor

## Museums

- Long Beach Museum of Art
- Museum of Latin American Art
- University Art Museum, Cal State Long Beach
- Rancho Los Cerritos

## Special Attractions

- Queen Mary
- Aquarium of the Pacific
- El Dorado's Nature Center
- Long Beach Arena
- Long Beach Terrace Theatre

Photos: Destinations Long Beach Magazine

# Thursday, March 15, 2007

## Distinguished Keynote Address



### Jonathan Kozol "Against All Odds" General Session (8:30 a.m. – 10:30 a.m.)

Jonathan Kozol will speak of the formidable challenges facing children of minorities and English Learners in the age of testing and strict accountability decreed by NCLB. He will outline strategies to defend these children from xenophobic biases and to guarantee they can succeed. For the past thirty-five years, Jonathon Kozol has been an advocate for children. He is not the only advocate of the forgotten pupil, yet he has been among the most vocal and active. This is Kozol's purpose: to strive for a public call for social change, and to guide the cause once it has arisen.

## Featured Speakers



### Jim and Lydia Stack "Are Reading Intervention Programs Appropriate Future Investments for English Learners?"

Lydia Stack is Director Emeritus from the San Francisco USD. Jim Stack is the Director Emeritus of Achievement Assessments for the San Francisco USD and was the 2003 President of the CA-AERA. They will discuss how low performing schools under NCLB have large percentages of English Learners in the process of acquiring English being placed in intervention programs designed for native English speakers having difficulty in reading.



### Graciela Italiano-Thomas "Partnerships for Children: The Opportunities Created by Universal Preschool"

Graciela Italiano-Thomas, Chief Executive Officer, of Los Angeles Universal Preschool (LAUP), has extensive experience as an educator, administrator, and community builder. Some people consider educating English Learners to be an extra burden or challenge to be saddled with. At LAUP, we believe it is an opportunity to bring educators and parents together in partnership with other community resources on behalf of children.



### Noma LeMoine "Standard English Learners: Overlooked and Underserved Language Minority Students"

Noma LeMoine is currently the Director of the Los Angeles Unified School District's Academic English Mastery and Closing the Achievement Gap Branch. She is a nationally recognized expert on issues of language variation and learning in African American and other students for whom Standard English is not native.



### Sonia Nieto "Teachers as Advocates for Every Student"

Researcher, teacher, lecturer, and writer, Sonia Nieto is Professor Emeritus of Language, Literacy, and Culture in the School of Education, University of Massachusetts, Amherst. Nieto will review several major themes that characterize the work teachers do, particularly with immigrant students and those for whom English is a second language, to promote learning and inclusion and conclude with some thoughts on how teacher education and professional development can prepare teachers for their multiple and complex roles to benefit all students.



### Alma Flor Ada "This Path I Shared With You"

Alma Flor Ada is an award winning author of books for children and young adults. She is a Professor at the University of San Francisco where for over 22 years has directed the work of hundreds of doctoral students in the area of International and Multicultural Education. She is a beacon of Bilingual Education in the U.S. and recently she published her second novel in Spanish. She will share important events in her life that have provided her with the opportunity to learn, and the strength to share lessons on the cumulative effect of daily doses of purpose and persistence.



### F. Isabel Campoy "Reason for Celebrations: A Year of Roses, Risas, and Rebellion"

F. Isabel Campoy is an award winning author of books in poetry, theater, stories, biographies and art of the Hispanic World. She is a scholar devoted to the study of language acquisition, a field in which she started publishing in 1973 after obtaining her degrees in Philology from Universidad Complutense in Madrid, Reading University in England, and UCLA in the United States. Come and share a year in the life of author Isabel Campoy: her latest research, the roads traveled, the battles fought, the people discovered, and how all that turned into books published in 2006-07.



Thursday, March 15, 2007

## Full Day Institute

### Academic Language for English Learners using Project GLAD

This presentation will take participants from accessing and building background information and schema, through guided oral practice and clarifying of ideas to application in reading and writing. The research and writings in the field will be explored and tied directly to the strategies.

Presenter: Marcia Brechtel, Orange County Department of Education

## Half Day Institutes



### Raising the Achievement of African American Students

Recognition, valuing and positive use of a student's prior knowledge, language, culture, communal life, familial life and group history are prerequisites for a successful learning experience. The legacy of institutional racism has denied these

prerequisites to those groups of students who fare the worst in our schools. This institute will provide the opportunity for participants to examine an equity-centered framework.

Presenter: Enid Lee, Enidlee Consultants Inc.

### The PROMISE Initiative—A Six-County Collaboration for Transformational Reform for English Learner Success

The PROMISE Initiative is a six county collaboration. In this institute, participants will get an in-depth look at the eight core principles that provide the framework for PROMISE along with the PROMISE Matrix Tool©.

Presenters: Jan Gustafson, Director, PROMISE Initiative, Laurie Olsen, Ph.D., California Tomorrow and PROMISE County, District, and School Team Leads

### Using Data to Build Better Readers: Implications for Teaching English Learners

Effective instruction for English Learners depends on the skillful use of data, and the California Standards Test (CST) provides critical information for instructional decision-making.

Presenter: Dennis Fox, Los Angeles County Office of Education

### Enfrentando Comportamientos Destructivos de los Adolescentes

La presentación esta diseñada para proveer a los padres con estrategias efectivas para enfrentar comportamientos destructivos en los hijos. Durante el instituto los padres podrán contemplar estrategias de prevención para desarrollar una relación positiva entre padres e hijos.

Ponente: Lucio Padilla, Calxico Unified School District

### California Language Arts Standards: Side by Side

California Language Arts Standards: Side by Side is a practical tool to facilitate cognitive planning and differentiation of the English Language Arts Standards by specific grade level and levels of language acquisition. It provides a cohesive structure to guide transference of Spanish to English skills.

Presenter: Silvia C. Dorta-Duque de Reyes

### From Internal Accountability to Systemic Professional Development: Tools & Strategies for Accelerating English Learner Achievement

This institute helps build the capacity of district/school participants to cultivate internal accountability and put into place professional development that is long-term, strategic, and high-value.

Presenter: Robert Linquanti & Linda Carstens, WestEd

### Acquiring Language through Cooperative Learning

The presenters will discuss the Kagan Structures, best known as cooperative and communicative teaching strategies - tools that promote language fluency and enhance content acquisition.

Presenter: Tom Searl, Kagan Professional Development

### Second Language Instruction in Action

Participants will view an unedited ELD lesson and participate in completing a series of structured tasks that will guide them in the analysis of the lesson.

Presenters: Gisela O'Brien and Alfredo Schifini, Los Angeles County Office of Education

### Apartheid in California Schools Denied through Mendez v. Westminster et al, 1946-7: Why aren't we teaching about it in California schools?

This presentation examines California's history for its school children by analyzing the Mendez v. Westminster and Brown v. Board of Education cases.

Presenters: Anaída Colon-Muniz, Ed.D., Chapman University, Evangelina Brignoni, Ph.D., University of Nebraska at Omaha, Sandra Robbie, KOCE TV, and Sylvia Mendez, Mendez v. Westminster Case

### Making Instructional Adaptations for EL's in the Mainstream Classroom: An Equity Solution Assuring Educational Justice

Making instructional adaptation implies the creation of a relevant and appropriate yet challenging learning experience where all students feel safe, comfortable, trusted, confident, and respected their identity level of academic proficiency cultural beliefs, and ideals they uphold.

Presenters: Margaret Solomon, University of Redlands and Jose Lalas, University of Redlands

### Using Active Participation in the Classroom: Changing the Paradigm

Are you searching for new ways to get students actively involved in their learning? This lively demonstration offers educators an opportunity to learn innovative strategies/activities that promote listening, speaking, reading, and writing skills.

Presenters: Kathy Reich and David Noyes, Long Beach Unified School District

Friday, March 16, 2007

## Distinguished Keynote Address



### Ronald Takaki "America in a Different Mirror"

General Session (8:30 a.m. - 10:30 a.m.)

Ron Takaki is one of the most preeminent scholars of our nation's diversity. He is a professor of Ethnic Studies at the UC Berkeley, where he has taught over 10,000 students during 32 years of teaching. The Berkeley faculty has honored him with a Distinguished Teaching Award. Born in 1939, Takaki is the grandson of immigrant Japanese plantation workers in Hawaii. He graduated from the College of Wooster, Ohio, in 1961. Six years later he received his Ph.D. in American history from UC Berkeley. Professor Takaki is the author of 11 books. They include significant titles, such as: *Iron Cages: Race and Culture in 19th Century America* (Knopf, 1979) and *A Different Mirror: A History of Multicultural America* (Little, Brown, 1993). His presentation will discuss: What do we teach in order to educate every student? Why do we do it? How do we do it?

## Featured Speakers



### Donaldo Macedo

"The Poisoning of Racial and Ethnic Identities: The Immigration Debate"

Donaldo Macedo is a full professor of English and a Distinguished Professor of Liberal Arts and Education at the University of Massachusetts

Boston and has published extensively in the areas of linguistics, critical literacy, and multicultural education. Macedo will share examples from the mass media, the assault on bilingual and multicultural education, the attack on immigration, popular culture, and politics to illustrate the larger situations facing educators.



### Kathryn Lindholm-Leary

"Spanish and Chinese EL Students' Perceptions of Bilingualism and Biculturalism"

Kathryn Lindholm-Leary is professor of Child and Adolescent Development at San José State University, where she has taught for 19 years. Lindholm-Leary will review a study of over 700 Chinese and Spanish-speaking EL's and FEP students in grades 4-8 in various bilingual program models.



### Elana Shohamy

"Mechanisms for Perpetuating English Monolingualism and Suppressing Diversity: Policy, Consequences and Rights"

Professor Elana Shohamy is the chair of the Language Education program at the School of Education Tel Aviv University, Israel. She will discuss how the policy of English monolingualism is currently being declared and promoted in the US in the name of social cohesion, patriotism, loyalty, unity and security. Shohamy will critique this declared policy in terms of education, society, personal rights and the misleading association of language and patriotism.



### Eugene García

"The Role of Complex Language in EL Schooling"

Eugene García is Vice President for University-School Partnerships and Dean of the College of Education at Arizona State University. He will

discuss the new national data generated by the National Task Force on Early Education for Hispanics, chaired by Eugene García, and the Aspen Institute Commission on NCLB. This research indicates that EL students are not making gains in complex literacy areas of instruction at all levels of the education experience and that new, innovative and more challenging instruction must be provided if significant gains are to be realized.



### J. David Ramírez

"Designing Quality Early Childhood Education Programs for English Language Learners: Research Foundations"

This presentation will provide participants with a research base for guiding the design of early childhood education programs for English Learners, with a particular emphasis on Dual Language Immersion Education Programs. J. David Ramírez received his Ph.D. in child development from Stanford University with a specialty in program evaluation. His program, evaluation, and research experience has consistently focused on issues of educational equity for linguistically, racially, and culturally diverse populations. He is a specialist in the design and evaluation of education programs for language-minority students.

*CABE 2006 Voices*

"The presenter's knowledge of subject matter and her enthusiasm are both commendable."



Friday, March 16, 2007

## Full Day Institutes

### What is so revolutionary about Revolutionary Critical Pedagogy? Understanding the Contradictions and Challenges of Critical Pedagogy in the Teaching Trenches

This institute will examine whether the principles of a revolutionary critical pedagogy, that looks to contend with the sources of all oppression—globalization and neoliberalism—can move from an avant-garde theoretical platform to becoming the inspiring force of the teacher movement.

Presenters: Marta Baltodano Ph.D. and Yvette Lapayese Ph.D., Loyola Marymount University

### Establishing and Supporting a District-wide Secondary ELD Program

The Los Angeles USD has implemented a coherent and comprehensive English Language Development (ELD) program around Hampton-Brown's High Point series. This institute will provide an overview and an analysis of the components needed to implement a systemic ELD program at the middle and high school levels.

Presenters: Ludo Deschuytter, Los Angeles USD and Gretchen Laue, UC Professional Development Institute

## Half Day Institutes

### Creating a Positive Environment Conducive to Learning at Home and in the Classroom

The purpose of this workshop is to provide teachers, para-educators, and parents with a variety of effective strategies to deal with many of the problems encountered by our children as they develop. Behaviors are learned and developed according to the environment in which children grow.

Presenter: Lucio Padilla, Callexico USD

### English Learners: Talking, Writing, and Thinking Like Scientists

Are you searching for better, powerful ways to teach science to your English Learners? Through a modeled lesson, you will learn about a set of practical, easy-to-use tools and strategies that truly give English Learners universal access.

Presenter: John Carr, WestEd

### Arte Ganas - An Educational, Motivational and Fun Mural Art Workshop

An Arte Ganas mural art workshop is a highly creative and motivational vehicle that uses music, art and lots of fun to enhance culture, team building and art skills for the classroom. During this hands-on workshop, participants will create an entire colorful mural from scratch.

Presenter: Armando Cepeda, Arte Ganas Mural Workshops

### Matemáticas en Nuestra Cultura a Través de los Siglos

En esta sesión se discutirán las matemáticas en la cultura Latina dentro de un marco histórico abarcando desde la época pre-colombiana hasta hoy. This session will discuss mathematics in the culture of Latinos in a historical perspective from pre-Columbian times to today.

Presenter: Luis Ortiz-Franco, Chapman University

### Closing the gap through data analysis and research based practices K-6

Participants will analyze CELDT data to identify instructional needs of English Learners. Appropriate research-based strategies that include content and language objectives, background knowledge, comprehensible input, vocabulary development, and assessment for learning will be modeled.

Presenter: Ruth Díaz de León, Chula Vista Elementary School

### The WRITE Institute: On-demand Writing for Academic Achievement

The Writing Reform Institute for Teaching Excellence (WRITE) Institute will address how to improve on-demand writing for English Learners and struggling students. Citing current research, the institute will address the on-demand writing requirements in California, how they are used as assessment tools, and which writing genres the high-stakes writing assessments address.

Presenter: Julie Goldman, WRITE Institute

CASE 2006 Voices

"Excellent presentation. She engaged the crowd and honored our voices."

"We need more workshops like this if we are to really create change for our students."

Friday, March 16, 2007

### Secondary School Leadership for English Learner Success

Many secondary schools are struggling with persistent underachievement of English Learners. This interactive institute is designed for secondary school leaders who are seeking to brush up on English Learner issues in order to proactively create schools with full participation and high achievement.

Presenters: Laurie Olsen Ph.D., California Tomorrow

### Informing your Writing Instruction through Data Dialogues

Join colleagues in a dialogue that focuses on data from trial writing. Teachers will use data to identify specific writing needs and more importantly create instructional opportunities that support all students.

Presenter: Erminda García, Isaac School District

### Standards-based differentiated ELD instruction

This institute will provide teachers with a very specific overview of how appropriate standards-based differentiated ELD instruction should be implemented during the regular reading language arts block and not only during "ELD" time. The interactive, hands-on experience will be provided within the context of a 2-year professional development program offered through the Center for Language Minority Education and Research.

Presenter: Adel Nadeau, CLMER

### The History of Mexican Art from the Olmecas to the Present

An overview of Mexican art from its Pre-Hispanic roots, with wonderful creations of the Aztecs and the Mayas, through colonial times, arts of the 19th and 20th Century and Mexico's contemporary artistic scene.

Presenter: Gregorio Luke, MoLAA

### Mindfully Resolving Conflict: Facilitation for Diversity Issues

How do we begin a conversation with people culturally different from ourselves? What if they get angry, offended or hurt? Explore what it takes to develop authentic and meaningful relationships, even in conflict or misunderstanding, using role-play, training vignettes, and discussion, and addressing issues such as racism and cultural differences.

Presenter: Lee Mun Wah, Ed.D., StirFry Seminars & Consulting

### Six Keys to Managing Successful Programs for English Learners

The purpose of this session is to provide school district and site administrators with tools for implementing successful programs for English Learners. We will draw on recent research in schools successfully implementing both bilingual and structured English immersion programs and will also examine business management practices.

Presenters: Norm Gold, Norm Gold Associates and Karen-Kendall, Newport-Mesa USD

\*Please note that all scheduled dates and times in this brochure are tentative and subject to change.

## Seal of Excellence Banquet Speaker



### María Amparo Escandón "A Second Language Learner... The Hard Way"

Adapting to the American lifestyle while preserving one's own culture is no small feat, yet, millions of immigrants go through this process as they establish themselves in the United States. María Amparo Escandón tells of her journey into a successful bilingual fiction-writing career. Her best-selling first novel, *Esperanza's Box of Saints* and its Spanish version, *Santitos* was published by Simon & Schuster and Random House respectively. Her novel has been the number one best seller on the Los Angeles Times Best Sellers List and has been translated into 21 languages and is currently read in over 89 countries. María also wrote the screenplay "Santitos," on which she based her novel. Her new novel, *González & Daughter Trucking Co.* and its Spanish version, *Transportes González e Hija*, was published and is now on best seller lists around the country and is the publisher's "Book of the Year" in Spain. She was named the Writer to Watch by Newsweek magazine and by the Los Angeles Times.





# A Literacy & Music Event

**Saturday March 17, 2007**

CABE 2007 is planning a very special Saturday for conference attendees. We start the day with an exciting distinguished speaker general session highlighting a noted author and musician. After this presentation, we feature exceptional special presentations with outstanding children's authors and musicians.

## Distinguished Keynote Speaker



**Ruben Martinez**

**"Becoming Culture: The Languages of the Future"**  
General Session (9:00 a.m. - 10:30 a.m.)

Rubén Martínez is an award-winning journalist, author and musician who will present an examination of the process, taking place at this very moment, of cultural change and what it represents everywhere from pop to classroom. His essays, opinions and reportage have appeared in the New York Times, Washington Post, Los Angeles Times, San José Mercury News, *Salon*, *Village Voice*, *The Nation*, *Spin*, *Sojourners*, and *Mother Jones*, among others. As a political commentator, he has appeared on ABC's Nightline and Politically Incorrect, PBS's Frontline, NPR's All Things Considered, and on CNN, and he also received an Emmy Award for hosting PBS-affiliate KCET-TV's Life & Times.



## Featured Speaker



**Diane August**

**"Findings from the National Literacy Panel on Language Minority Children and Youth"**

Diane August is Senior Research Scientist at the Center for Applied Linguistics and was the Staff Director for the National Literacy Panel on Language Minority Children and Youth. The formal charge to the National Literacy Panel was to identify, assess and synthesize literacy research into the education of language-minority children and youth, and to produce a comprehensive report evaluating and synthesizing this literature.

## Half Day Institutes

### Asian and Pacific American Institute

The APA Institute showcases presentations on issues pertinent to the effective instruction of various groups of APA students. This year, the APA Institute will focus on Korean American students in secondary schools, and using an anti-bias curriculum to address issues of APA identity and bi-/multilingual development.

Presenters: Clara Park Ph.D., CSU Northridge and Grace McField Ph.D., CSU San Marcos

### Indigenous Language Revitalization and Education in the United States

This workshop focuses on the status of indigenous languages in the U.S., what indigenous communities are doing to maintain them, and what role the education system plays in both language decline and language revitalization.

Presenter: Leanne Hinton, UC Berkeley

### Interpretation and Translation in the School Environment

School staff using interpreters and bilingual staff serving as interpreters will find this interactive workshop very appealing. You will receive very useful information to better serve the growing number of non-English speakers in the school community.

Presenter: Mauricia Saucedo, Chula Vista Elementary School District

## Authors of Children's Literature



**Jorge Argueta**

**"Immigrant Stories / Historias de un Inmigrante: The making of a children's book writer"**

Jorge Argueta will read from his published works including his newest books. He also talks about growing up in El Salvador and particularly about the war and his memories of life in a neighborhood where many of his close friends were killed. In 1980, afraid for his own safety, Jorge left El Salvador. He shares his experiences as an immigrant to the United States, and his story continues with events that eventually led him to become a poet and author of award-winning books for children.



**José Luis Orozco**

**"Songs, Games and Rhymes for a Multicultural Classroom"**

Music can be an exceptional learning tool because it allows children to learn as they sing and play. Often, children learn faster and more effectively through games because, unlike formal teaching modalities, they are non-threatening mode of learning. When children are singing and moving, they are more apt to enjoy, -and remember- what they learn. Traditional Latin American songs and original compositions will be sung in Spanish and English.



**Monica Brown**

**"An Author's Perspective: Creative Readings and Critical Conversations"**

Monica Brown is an award-winning bilingual children's book author who draws inspiration from her own Peruvian heritage and loves sharing her stories with children and adults of all ages. She is the author of many books, such as *My Name is Celia: The Life of Celia Cruz/ Me Llamo Celia: La Vida de Celia Cruz*, which won the Americas Award for children's literature. She will discuss her inspiration and the importance of sensitivity, "authenticity," and research, while also reading from her work—her readings are more like performances!



**René Colato Laínez**

**"The Authentic Latino Immigrant Experience in Picture Books"**

Multicultural picture books reflect the diversity and experiences of minority children and promote a greater understanding of other cultures. René

Colato Laínez is the Salvadoran author of *Waiting for Papá* and *Playing Lotería*. His picture book *I Am René, the Boy* received the International Latino Book Award for Best Bilingual Book of 2006 and a Special Recognition in the 2006 Paterson Prize for Books for Young People. He has been a bilingual elementary teacher at Fernangeles Elementary School, where he is known by the students as "the teacher full of stories."



**Vivian Mansour Manzur**

Mexican author Vivian Mansour Manzur lives in Mexico D.F. and writes with great wit and sensitivity. She incorporates the world of Lucha Libre into a little boy's search for self-esteem in *El Enmascarado de Lata*, while in *El Peinado de la Tía Chofi*, she presents a hilarious, uproarious, endearing story that

tells of a little tiny beetle that takes refuge in Tía Chofi's six-foot tall hairdo on the way to a wedding.



**Suni Paz**

**"Compartiendo nuestra cultura con canciones, juegos, cuentos y leyendas/ Sharing Culture Through Songs with Games, Songs, Stories and Legends"**

Suni Paz has recorded and has been published extensively. Singing in English and Spanish, she has performed her children's music and folk music for years, thrilling audiences of all ages on stage, radio, and television all over the world. Her unique songs inspire positive ideas, the strength of the human spirit, and a caring world view.

*CABE 2006 Voices*

"Excellent! What an amazing project! Thank you so much for sharing. An excellent presentation."





## Honorary Chairs

Dr. Herbert Fischer  
Dr. Darline Robles  
Christopher J. Steinhauser  
Roy Romer  
Dr. Michael F. Escalante  
William H. Habermahl

## Co-Chairs

Erin Bostick Mason  
San Bernardino County Supt. of Schools

Shelly Spiegel-Coleman  
Los Angeles County Office of Education

Rese Jacobs  
Long Beach Unified School District

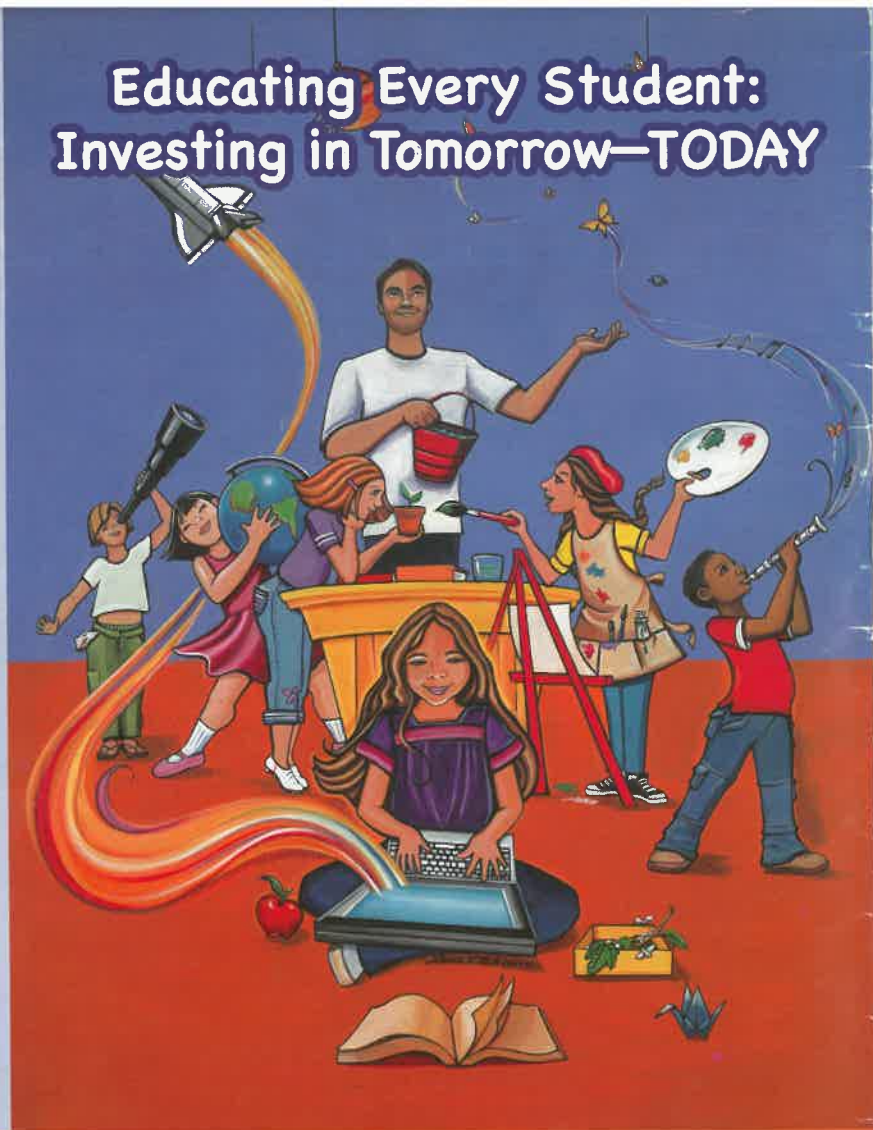
Jesus Limón  
Los Angeles Unified School District

Joanne Junge  
Glendale Unified School District

Howard Bryan  
Santa Ana Unified School District

Estella M. Acosta  
Orange County Dept. of Education

## Educating Every Student: Investing in Tomorrow—TODAY



California Association for Bilingual Education  
16033 E. San Bernardino Road  
Covina, California 91722-3900

NON-PROFIT  
U.S. POSTAGE  
**PAID**  
COVINA, CA  
PERMIT #369

# CABE 2007

If the addressee is unknown, please forward to an interested or potential participant