



A n n u a l
C o n f e r e n c e

Registration Materials

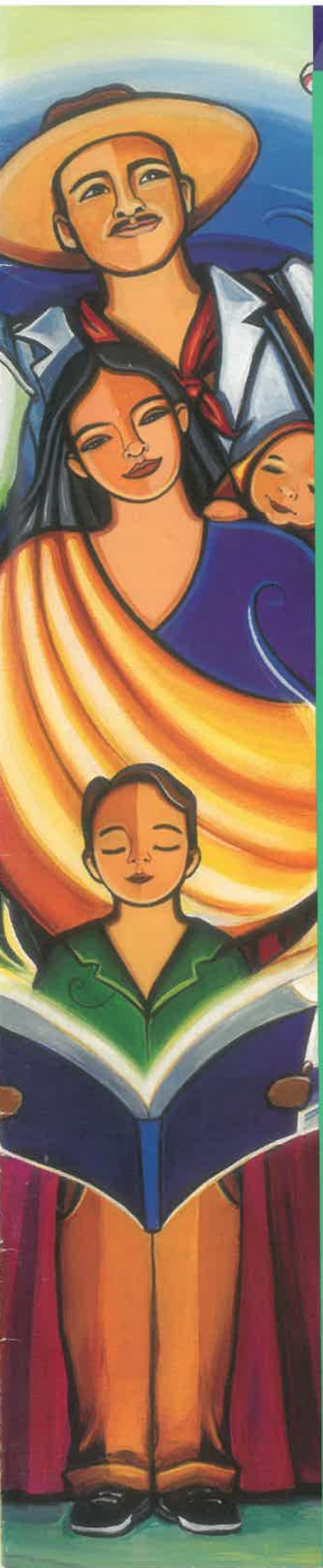
CAIBE 2006

Courage to Act

Begins with

One Voice

San José McEnery Convention Center
San José, California
March 1-4, 2006



CABE 2006

Courage to Act Begins with One Voice

The California Association for Bilingual Education (CABE) is the premier organization for professional development in the education of second language learners. Entering our fourth decade of service to educators, parents, students, schools and community, the annual conference will feature High Quality, Standards Aligned Professional Development for everyone involved in educating culturally, linguistically, and racially diverse background students.

CABE believes that every student in our schools must have the opportunity for academic success. In light of this, CABE 2006 offers participants professional development that engages them in collaborative and collegial work, while providing opportunities for meaningful individual learning. Every type of professional development event planned—keynote and featured speakers, institutes, and workshops—develops, refines, and expands participants' pedagogical repertoire, content knowledge and skills, and promotes the use of continuous inquiry and reflection to increase their capacity to educate English Learners in all types of instructional settings.

CABE 2006 provides attendees the opportunity to share perspectives and seek solutions for common challenges in an atmosphere of collegiality and professional respect. Programs for English Learners are successful when educators engage and support all students in learning and create and maintain effective, culturally responsive learning environments. At CABE 2006 participants can attend a wide variety of institutes and workshops that offer new, innovative ways of:

- Planning instruction for second language learners;
- Designing learning experiences for culturally, linguistically and racially, diverse background students;
- Adapting subject matter lessons that raise the level of academic English and increase subject matter knowledge;
- Assessing student learning;
- Administering culturally and linguistically appropriate programs for academic success;
- Learning about new and effective instructional materials;
- Integrating technology in programs for English Learners;
- Highlighting successful practices with proven results; and
- Engaging parents and community in the instructional program.

Highlights at CABE 2006

Exhibits

Exhibitors with instructional materials used in all areas of education for English Learners, including technology, provide participants the opportunity to review and purchase the latest in materials and publications. (See the Preliminary Agenda page of this brochure for Exhibit hours.)

Career Fair

School districts and various agencies participate at CABE 2006 with the primary goal of recruiting educational professionals for their districts and/or organizations. This is the perfect opportunity to learn more about employment and professional opportunities within the educational field or other fields seeking bilingual personnel. A special Career Fair section with employment opportunities is also featured in the conference program. (See the Preliminary Agenda page in this brochure for Career Fair hours.)

Special Luncheons and Banquet/Dance

CABE 2006 features two special luncheons and a Friday night banquet. Thursday's luncheon highlights Educator of the Year Awards while Friday's luncheon honors parents and student essay winners. Friday's attendees are invited to enjoy the CABE Seal of Excellence Banquet and Dance featuring a keynote address and the 2006 Seal of Excellence schools highlighting outstanding programs. For information about the nomination opportunities for each of these awards, please contact CABE Headquarters at (626) 814-4441 or visit CABE's website at www.bilingualeducation.org for all applications.

California Department of Education Technical Assistance

The English Learner Accountability Unit and the Language Policy and Leadership Office encourage parents, teachers and district representatives to stop by their technical assistance room where they will provide information and answer questions regarding legal requirements for educational services to English Learners. Information from the USDE Office for Civil Rights and the California Commission on Teacher Credentialing will also be available.

High School Student Academy

This annual full-day program for high school students takes place on Friday, March 3, 2006, from 10:30 a.m. to 5:15 p.m. The program will highlight issues of leadership, literature, and culture relevant for high school students. Participating students receive lunch along with registration for this event. (Please use the CABE registration form in this brochure to register high school students for this event.)

CABE 2006 Cyber Café

Don't miss out on the central hub of the Exhibit Hall! This year's Cyber Café provides attendees a location to check email, try new software, discover new technology trends, surf the web, and also meet friends. Mini-presentations and classes at the Cyber Café offer attendees an opportunity to obtain information on a wide range of technology topics, such as web development, software instruction, and technology for second-language learners.

CABE 2006 Artist

Born in Los Angeles, California and raised in the predominantly Mexican community of Pico Rivera, Laura Vázquez Rodríguez was inspired to paint at an early age. Influenced primarily by the intriguing and sometimes inconceivable but vivacious stories told by her ninety-two year old great grandmother, Laura's dreams began to reflect a world full of vivid colors and endless possibilities, like her grandmother's stories. Dreams that til this day inspire her to share these fantastic "impossibilities" with others. Her work can be seen in various arenas, each piece of work designed to evoke and stir the spirit.

Parent Hospitality Center

With the support of a U.S. Department of Education grant, CABE's Project INSPIRE is pleased to offer a special series of leadership workshops for parents during the conference on topics ranging from "No Child Left Behind" to "Helping Your Child Prepare for College". The Rosalía Salinas Hospitality Room, equipped with refreshments, materials, networked computers, technical assistants and trainers, will also be available exclusively for parents to give them an orientation to the conference and to facilitate their on-site and virtual networking.

Highlights at CABE 2006

Workshops and Institutes

CABE 2006 features over 300 workshops and over 30 institutes (full and half-day) in all areas of education for English Learners and other students learning a second or third language. These professional development opportunities are scheduled throughout the four days of the conference, giving participants the opportunity to select workshops, featured speakers, institutes and other conference activities within their areas of interest. All sessions are held at the San José McEnery Convention Center and adjacent hotels. (Please see the institute highlights and the Preliminary Agenda pages in this brochure.)

University Credit

University credit through National Hispanic University is available while attending workshops, institutes and featured speakers at CABE 2006. Registration and payment of fees of \$60.00 per continuing education unit (CEU) can be made on-site at the University Credit Booth located in the San José McEnery Convention Center. (Note: to earn university credit, participants must register for university credit prior to attending any workshops or institutes). For additional information on university credit requirements, please contact Kathy Hess at (408) 273-2752 or via email at: khess@nhu.edu

CABE 2006 Offers Standards-Aligned Professional Development so educators can meet NCLB Professional Development Requirements.

Research tells us that every effort to transform schools calls attention to professional development as a primary vehicle to bring about needed change in schools. Professional Development, however, must address the specific needs and concerns of educators and parents to make essential change happen. CABE, as the premier source of professional development in the education of English Learners, is committed to bringing every attendee up-to-date, research-based, standards-aligned professional development that integrates the principles of good teaching and learning, together with stimulating, respectful environments conducive to adult learning.

CABE 2006 allows teachers to meet the NCLB requirement that all teachers of English Learners, assigned to teach core academic subjects, will be highly qualified and demonstrate core academic subject matter competence. Teachers who attend the full four-day conference of standards aligned professional development can accrue up to 20 hours (earning 5 points) towards completing the California High Objective Uniform State Standard of Evaluation (HOUSSE).

Full (6 hour) and half-day (3 hour) institutes in Reading and Language Arts, Mathematics and Science, Social Science, and Visual and Performing Arts offer quality professional development opportunities. Additionally, teachers will be offered over 300 workshops to choose from that focus on core academic subjects and on instructional strategies for successfully educating English Learners. Please note that all scheduled dates and times in this brochure are tentative and subject to change.

CABE will award teachers a transcript of completion that may be used as a part of a professional development sequence approved by local school districts. NCLB signature gathering forms to document attendance will be available at the University Credit Booth in the convention center 2nd Floor Concourse Area. Teachers must secure the signature of individual presenters at the end of each session attended. Individual districts can provide information about the specific clock-hour requirements for their district.

Professional Development Strands:

Administration and Management - workshops and institutes on administration and management of equitable programs for racially, linguistically and culturally diverse students.

Asian and Pacific American Strand - workshops and institutes on the importance of language and culture for Asian and Pacific Americans as well as their academic needs.

Assessment, Evaluation & Accountability Strand - workshops and institutes for evaluating services and results for accountability and instructional improvement for English Learners.

Critical Pedagogy Strand - workshops and institutes highlighting transformative educational experiences and practices that explore and construct personal and shared understandings and critical literacy.

Content Area Curriculum Strand - workshops and institutes highlighting strategies, methods, and materials pertinent to bilingual (L1) or English only (L2) settings in all areas of the curriculum, e.g., math, science, language arts, social studies, visual/performing arts, environmental education.

Cooperative/Collaborative Learning Strand - workshops and institutes highlighting strategies for implementing cooperative/collaborative learning experiences in all types of instructional settings.

Early Childhood Education Strand - workshops and institutes highlighting the need to plan research-based early childhood education programs that fully integrate language and culture.

English Language Development Strand - workshops and institutes that develop educator's expertise in teaching English to English Learners and highlight instructional methods, materials and other features of second language education.

Indigenous Languages Strand - workshops and institutes feature heritage language programs that are making a difference and helping students relearn their language and cultures, e.g. indigenous language groups.

Leadership and Advocacy Strand - workshops and institutes geared to CABE transformative leadership development.

Multicultural/Anti-bias/Diversity Education - workshops on strategies and features of culturally responsive instructional practices and programs respecting of students' language and culture.

Multicultural Environmental Education - workshops which use environmental education strategies to promote the acquisition of language and highlight hands-on lessons and techniques that teach CA content standards using the environment.

Parent and Community Engagement Strand - workshops on parent involvement and leadership development to increase the voices of parents as they become active partners in education and advocates for their children.

ParaEducators Strand - workshops and institutes featuring strategies for working with students and for building bridges to the wider school community.

Policy Making/Legal and Political Issues Strand - workshops and institutes highlighting policy and legal/political issues affecting English Learners.

Research Strand - workshops and institutes highlighting research on proven models, recent studies on programs (3+ yrs data), teacher action research or Doctoral/Post Doctoral studies.

Standard English Learners Strand - workshops and institutes on Standard English Learners (SELS) for whom Standard English is not native, and whose home languages differ in structure and form from the language of school or what is referred to as standard American or academic English.

Special Needs Education Strand (e.g. Gate/Special Education) - workshops and institutes highlighting the educational and linguistic needs of students in special needs programs.

Two-Way Bilingual/Dual Immersion Strand - workshops and institutes that highlight successful programs and provide participants with the how-to's for implementing quality programs for English Learners and English proficient students.

Technology/Technology Integration Strand - institutes and workshops that feature hands-on technology information on new and innovative ways to teach English Learners by incorporating technology into school program.

Teacher Preparation/Professional Development Strand - institutes and workshops on the latest teacher preparation and professional development will provide information on many innovative, research based practices.

Preliminary Agenda

San José, McEnery Convention Center March 1-4, 2006

Tuesday, February 28, 2006

8:00 a.m. - 4:00 p.m. Exhibitors Move-In, San José McEnery Convention Center, Hall 1 and 2

Wednesday, March 1, 2006

7:30 a.m. - 8:30 a.m. School Site Visits Registration and Transportation to schools
 7:30 a.m. - 4:00 p.m. Conference Registration, 2nd Floor Concourse Area - McEnery CC
 8:00 a.m. - 10:00 a.m. Exhibit/Career Fair Move-In and Set-up, McEnery CC Hall 1 and 2
 8:00 a.m. - 4:00 p.m. Tote Bag pick-up, 1st Floor Arcade Lobby, McEnery CC
 8:30 a.m. - 2:00 p.m. School Site Visits
 8:30 a.m. - 3:30 p.m. CABA Joint Delegate Assembly Leadership Institute
 10:30 a.m. - 12:30 p.m. WIT Awards Ceremony
 11:00 a.m. - 3:00 p.m. Exhibit Hall Opening, McEnery CC Hall 1 and 2
 11:00 a.m. - 3:00 p.m. Parent Hospitality Room Opening, McEnery CC Room A7 and A8
 12:30 p.m. - 3:30 p.m. Pre-Conference Institutes
 4:00 p.m. - 6:00 p.m. Opening General Session, Hall 3 - **Keynote Address: Guy Garcia**
 7:00 p.m. - 11:00 p.m. Membership Reception and Dance

Thursday, March 2, 2006

7:30 a.m. - 5:00 p.m. Conference Registration, 2nd Floor Concourse Area, McEnery CC
 7:30 a.m. - 5:00 p.m. Tote Bag pick-up, 1st Floor Arcade Lobby, McEnery CC
 8:00 a.m. - 5:00 p.m. Parent Hospitality Room, McEnery CC Room A7 and A8
 8:30 a.m. - 10:00 a.m. General Session, Hall 3 - **Keynote Address: Tove Skutnabb-Kangas**
 9:00 a.m. - 6:00 p.m. Exhibits/Career Fair, McEnery CC Hall 1 and 2
 10:30 a.m. - 12:00 p.m. Workshops and Featured Speakers
 10:30 a.m. - 5:00 p.m. Full Day Institutes
 12:30 p.m. - 2:00 p.m. Educator of the Year Awards Luncheon, Hall 3
 2:15 p.m. - 3:45 p.m. Workshops and Featured Speakers
 2:15 p.m. - 5:15 p.m. 1/2 Day Institutes
 4:00 p.m. - 5:00 p.m. CABA Membership Meeting
 4:00 p.m. - 5:30 p.m. Workshops and Featured Speakers

Friday, March 3, 2006

7:30 a.m. - 4:00 p.m. Conference Registration, 2nd Floor Concourse Area, McEnery CC
 7:30 a.m. - 4:00 p.m. Tote Bag pick-up, 1st Floor Arcade Lobby, McEnery CC
 8:00 a.m. - 5:00 p.m. Parent Hospitality Room, McEnery CC Room A7 and A8
 8:30 a.m. - 10:00 a.m. General Session, Hall 3 - **Keynote Address: Gloria Ladson-Billings**
 9:00 a.m. - 5:00 p.m. Exhibits/Career Fair, McEnery CC Hall 1 and 2
 10:15 a.m. - 12:15 p.m. Administrative Leadership Symposium
 10:30 a.m. - 12:00 p.m. Workshops and Featured Speakers
 10:30 a.m. - 5:00 p.m. Full Day Institutes
 10:30 a.m. - 5:15 p.m. High School Student Academy
 12:30 p.m. - 2:00 p.m. Parent of the Year Awards and Student Essay Winners Luncheon, Hall 3
 2:15 p.m. - 5:15 p.m. 1/2 Day Institutes
 2:15 p.m. - 3:45 p.m. Workshops and Featured Speakers
 4:00 p.m. - 5:30 p.m. Workshops and Featured Speakers
 6:30 p.m. - 9:00 p.m. Seal of Excellence Awards Banquet
 9:00 p.m. - 12:00 a.m. CABA Seal of Excellence Dance

Saturday, March 4, 2006

7:30 a.m. - 10:30 a.m. Conference Registration, 2nd Floor Concourse Area, McEnery CC
 7:30 a.m. - 10:30 a.m. Tote Bag pick-up, 1st Floor Arcade Lobby, McEnery CC
 8:00 a.m. - 10:30 a.m. Parent Hospitality Room, McEnery CC Room A7 and A8
 9:00 a.m. - 10:30 a.m. Closing General Session - **Keynote Address: Allen Say**
 9:00 a.m. - 2:00 p.m. Exhibits/Career Fair, McEnery CC Hall 1 and 2
 10:45 a.m. - 12:15 p.m. Workshops and Featured Speakers

Wednesday, March 1, 2006

Pre-Conference Activities

Conference Registration

Registration opens at 7:30 a.m. and closes at 4:00 p.m. on Wednesday. Participants, who are pre-registered and received their conference badges in the mail, may go directly to the 1st Floor Arcade Lobby --Tote Bag Pick-up area to receive their conference materials and join the pre-conference activities. Other participants, who are pre-registered and did not receive their badge in the mail, may pick up badge and conference materials on 2nd Floor Concourse Area. New Registrants, that are not pre-registered, are invited to register for the conference at the "New Registration" area on 2nd Floor Concourse Area. Registration will continue to be available throughout the four days of the conference.

School Site Visits

(8:30 a.m. - 2:00 p.m.)

Visit exemplary programs for English Learners - e.g., Two-Way/Dual Language Immersion, ELD. Participants have an opportunity to see these programs in action. Buses depart from the San José McEnery Convention Center at 8:30 a.m. and return by 2:00 p.m. in time to participate in the Opening General Session. Please indicate participation and selection of school site (first and second choice--see descriptions of program types on page 10) for this event on the CABA 2006 Conference Registration Form in the appropriate section of this brochure. (Please note that there is a fee of \$30 to participate.)

Joint Delegate Assembly (JDA)

(8:30 a.m. - 3:30 p.m.)

CABA chapter leaders and delegates come together to learn, network, share best practices, and plan for regional and chapter activities at the local level at this annual JDA session. Participants receive an overview of the workshops, featured speakers, and institutes featured in the CABA Leadership strand. (Please note: For CABA Chapter Presidents/Designees only.)

CABA Preschool Summit (12:30 p.m. - 3:30 p.m.)

Several advocates, educators, and researchers will speak about the importance of high quality preschool opportunities for all California's children, especially for a preschool system that addresses the cultural and linguistic needs of English Learners. The panel will also cover the necessity for community members to be involved in the implementation of a preschool system to guarantee the system is reflective of the concerns and priorities of language minority communities. A researcher will also explain a recent cost-benefit analysis of preschool in California conducted by the RAND Corporation.

Exhibit Hall Opening

(11:00 a.m. - 3:00 p.m.)

Leisurely visit the San José McEnery Convention Center Hall 1 and 2 before the Opening General Session, when the conference formally opens. Participants have the opportunity to preview materials and other events at the Exhibitor/Career Fair as a first day, pre-conference activity.

3rd Annual WIT Awards

(10:30 a.m. - 12:30 p.m.)

Come celebrate with us as we honor exceptional educators at the WIT (Wisdom, Inspiration & Tenacity) Awards. CABA and Farmers Insurance have joined together to identify and give recognition to those educators who have demonstrated keen insight and overcome barriers in their quest to provide our students with outstanding educational experiences. The Farmers WIT Awards has become a "don't miss" event.

Join us on Wednesday, March 1, 2006 at the San José Marriott for this wonderful event. Guests will be invited to partake in a complimentary morning snack prior to the award ceremony. Attendees will also get a preview of new multicultural teaching materials available FREE to educators. Space is limited so register right away. Registration form is available in this packet.

Membership Reception and Dance

(7:00 p.m. to 11:00 p.m.)

Don't miss out! After the Opening General Session, CABA welcomes all CABA members to join us at the annual Membership Reception/Dance in their honor. Membership Reception and Dance will be held at the Marriott Hotel. Meet the CABA Board and Chapter Presidents, network with other members, eat great food, dance and just have fun!

Wednesday, March 1, 2006

Pre-Conference Featured Speakers (12:30 p.m. to 2:00 p.m.)


Patricia Gándara (Invited)

University of California, Davis

Professional interests in graduate teaching include: education policy/education reform, learning and assessment, and educational equity/bilingual and multicultural education. She has authored many publications and has served on editorial boards for journals such as, *American Educational Research Journal*. Her many publications include, *Over the Ivy Walls: The educational mobility of low-income Chicanos*.


Guadalupe Valdés

Stanford University

Research interests include language diversity and language-based discrimination and the policy problems that confront bilingual individuals who are residents of monolingual nations. Recent publications include: "Bilinguals and Bilingualism: Language Policy in an Anti-immigrant Age" and "Bilingual Individuals and Language-Based Discrimination: Advancing the State of the Law on Language Rights".

Pre-Conference Institutes (12:30 p.m. to 3:30 p.m.)

Content Based Teaching in a Korean Dual Language Program

This presentation will demonstrate a standard-based curriculum in a Korean Dual Language Program. It will emphasize multicultural education enhancing a student-oriented learning environment through cooperative and communicative activities.

Presenter(s): Jeesun Chung, Sung Kim

English Learners: Talking, Writing, and Thinking Like Scientists

Are you searching for better ways to teach science to your English learners? We present a new product full of tips, tools, and strategies specially for science teachers with English Learners. Have students talking, writing and thinking like scientists.

Presenter(s): John Carr, Ursula Sexton

Opening the Doors to High Point ELD Classrooms: In-Depth Lesson Study Through an Interactive Software Computer Platform

See High Point instruction in action! View unedited lessons with middle school students at various levels of language and reading proficiencies over an interactive software platform. A series of structured tasks will guide participants through the lesson analysis.

Presenter(s): Alfredo Schifini, Gisela O'Brien

La Conexión ELAC/DELAC

Los oficiales del Comité Consejero del Programa para Alumnos Aprendices de Inglés (DELAC) presentarán requisitos, técnicas, estrategias e ideas que se necesitan para tener juntas eficaces y exitosas. Compartirán el manual de ELAC/DELAC que desarrollaron y utilizaron en el entrenamiento de los oficiales de ELAC en los planteles escolares.

Presenter(s): Beverly Lopez, Amelia Juarez, Luis Villicaña, Martha Jimenez

Acquiring Language Through Cooperative Learning

Kagan Structures, best known as cooperative and communicative teaching strategies, are tools that promote language fluency and enhance content acquisition.

Presenter(s): Thomas Searl

Two-Way Bilingual Immersion Programs: An Overview

Two-way bilingual immersion programs are inclusive programs that offer all students the opportunity to acquire language proficiency and literacy in two languages. This institute is designed for participants who are interested in developing or beginning a two-way immersion program.

Presenter(s): Marcia Vargas, Rosa Molina

(Pre-Conference Institutes continue on next page)

"The Future of Heritage and Community Languages in the U.S. Local and Global Connections"

This institute addresses current prospects for preserving and promoting heritage and community languages in the United States. Panelists draw from demographic, educational, and community language analyses to address the challenges, opportunities, and prospects in the promotion of heritage languages in the U.S. *Presenter(s): Terrence Wiley, Wayne Wright, Daniel Choi, Kim-Oanh Nguyen-Lam*

The WRITE Institute: A César Chavez Resource Unit for K-12

Participants will receive the bilingual unit, "Learning Activities and Resources to Commemorate César Chávez." This unit, with activities in both English and Spanish, is aligned to the California State History - Social Science Standards and Frameworks and promotes biliteracy, academic learning and critical thinking for English Learners at all grade levels.

Presenter(s): Jeannie Cunningham

Webquesting: Using the Power of the Internet to Foster Teacher-Guided Student Inquiry

Learn the basics of integrating WebQuests, and explore various websites that support multilingual success in a standards-based classroom. This hands-on institute will introduce the basics of WebQuest and how it fosters higher order thinking skills, explore existing WebQuests and discuss strategies for implementing WebQuests in the classroom.

Presenter(s): Gil Díaz

Teaching for EL Success with Literature Response

This interactive institute will equip educators with strategies and materials to help 3rd-8th grade English Learners succeed with the most challenging STAR assessed writing genre: Response to Literature.

Presenter(s): Tonya W. Singer

(4:00 p.m. to 6:00 p.m.)

Opening General Session Keynote Address

This is the formal grand opening of CABE 2006. Participants have the opportunity to hear a motivational keynote address featuring:


Guy García

Journalist, Novelist, and Multimedia Entrepreneur

His new book, *The New Mainstream: How the Multicultural Consumer is Transforming American Business*, is both a wake-up call and road map to the new multicultural reality in America. The

New Mainstream explains how Americans will eat, work, play, learn, and spend money in the twenty-first century -- and why any organization that ignores the lessons of the New Mainstream is doomed to fail. The *New Mainstream* was recently chosen by Soundview Executive Business Book Series as one of the best business books of 2004. As an executive at America Online, he worked on the development of AOL International, AOL Broadband and launched the first iteration of AOL Latino, a bilingual site for AOL's two million Latino subscribers. García is a consultant and lecturer to major corporations and organizations on the economic and global implications of the *New Mainstream*.

Registration Information

Save \$\$
Meet the
Pre-Registration deadline.
Must be postmarked by
December 15, 2005!

Take advantage of the on-line discount and avoid on-site registration lines. When you submit your CABA 2006 registration(s) **early**, either on-line or by mail, your registration is processed in advance.

- If you register (either on-line or by mail) on or before **December 15, 2005**, we assure that you will receive your registration materials (conference badge, conference activity tickets, and school site visit assignments, etc...) mailed to the address you provide on the registration form **between January 15, 2006, and January 31, 2006**.
- If you register **between December 16, 2005, to January 31, 2006**, we will mail you a registration confirmation letter only. You will need to bring your confirmation letter and pick up your conference materials on-site at the designated registration booth(s).
- If you register on or **after February 1, 2006**, you will not receive a registration confirmation letter from CABA. You must bring and show your ID at the on-site registration area to pick up all conference related materials.

Important- Please Note:

- Name badges must be worn for admittance to all conference events, workshops, and exhibit hall.
- If badge is lost or forgotten, please be advised that requests for replacement badges prior to or during the conference will be honored but charged the full price paid when registration was first submitted. There will be NO EXCEPTIONS to this policy.

School site visit reservations must be made at the time of registration. Please read your registration form thoroughly, as certain restrictions and penalties do apply. Please select and indicate #1 and #2 choice. Page 10 provides program descriptions and the number assigned to each program type.

Mailing Instructions for Conference Registration

Please fill out the attached registration form completely and enclose payment. Pre-registration must be postmarked **no later than December 15, 2005**.

Mail registration to:

CABA 2006 Registration
P.O. Box 51204
Los Angeles, California 90051-5504

Please Note: If you do not mail the registration form to the address above, it cannot be processed. Registration inquiries may be made to CABA at (866) 814-CABA (2223), or via e-mail at customerservice@bilingualeducation.org.

Staff Development Day(s) For those school districts designating CABA 2006 as "Staff Development Day(s)," a registration incentive of one free registration (excluding meals) is available to groups submitting 25 registrations. These registrations must all be the same (either a full four-day pass or a one-day pass) regardless of the category: member, non-member, administrator, teacher, para-educator, parent, or student. All 25 registrations must be submitted on the same purchase order. For further information see item #12 of "Registration Instructions" located in this brochure.

Save time and money
Using On-line Registration

Registration on-line—now available at www.bilingualeducation.org

- Please note that the last day to register on-line is February 24, 2006. However if you register on-line between December 16, 2005 – February 24, 2006, you are still eligible for up to a \$20 discount.
- **Join CABA Today!** Save on conference fees when you become a member. You can also renew your membership on-line or use the on-line registration process to check your membership status.
- It's fast and user friendly! Your registration is processed via a secure server. Our secure site accepts Visa, MasterCard, American Express, and School District/Organization Purchase Orders.

Conference Registration Form

CABA 2006

Extra Savings! Register online. Just visit www.bilingualeducation.org

CABA 2006 • 31st Annual Conference • Bilingual Education: Courage to Act...Begins with One Voice
March 1-4, 2006 • San José McEnery Convention Center. **Pre-Registration Postmark Deadline: December 15, 2005**

REGISTRANT'S INFORMATION:

Please read the reverse side of this form prior to completing

First Name MI Last Name
Please check one: ☐ Teacher ☐ Administrator ☐ Parent
☐ Para-Educator ☐ Student

Affiliation (will appear on badge)

Mailing Address (Please note: All registration materials will be mailed to this address)

City State Zip
() ()
Work Telephone No. Home Telephone No.

Email Address

☐ I am a current CABA member as of March 31, 2006 (See #4 in the next column if you would like to join or renew your CABA membership.)

My Membership ID # _____

☐ YES, I would like interpretation for General Sessions and Keynote Speakers. LANGUAGE: _____

☐ NO, I would not like my name and address given to conference exhibitors on a one time basis for catalogs and materials.

☐ ADA, Yes. (See Item #2 on the reverse side)

CONFERENCE REGISTRATION FEES

1. REGISTRATION:

	Registration Fee	Pre-Registration Fee Postmarked by 12/15/05
Full 4 Day Pass		
<input type="checkbox"/> (A) Teachers/Administrators (Member)	\$435	\$315
<input type="checkbox"/> (B) Teachers/Administrators (Non-Member)	\$535	\$415
<input type="checkbox"/> (C) Parents, Para Educators, Students (Member)	\$280	\$170
<input type="checkbox"/> (D) Parents, Para Educators, Students (Non-Member)	\$295	\$185

One Day Pass Day of Attendance (Mark only one): ☐ Wed. ☐ Thur. ☐ Fri.

<input type="checkbox"/> (E) Teachers/Administrators (Member)	\$200	\$170
<input type="checkbox"/> (F) Teachers/Administrators (Non-Member)	\$255	\$225
<input type="checkbox"/> (G) Parents, Para Educators, Students (Member)	\$125	\$105
<input type="checkbox"/> (H) Parents, Para Educators, Students (Non-Member)	\$140	\$120

☐ (I) Friday High School Students Academy (H.S. Only) \$ 55 \$ 45
box lunch included with registration fee

☐ (J) Saturday Only (All Categories) \$ 55 \$ 45

☐ (K) Staff Development Day (Please see item # 12 on the reverse side for eligibility requirements for Staff Development Day Pass)

Total Registration Fees \$

2. EVENT TICKETS:

Due to limited capacity, meal tickets may not be available on-site.

- ☐ (EYL) Thur., 3/2/2006 Educator of the Year Luncheon-----\$40
- ☐ (SPL) Fri., 3/3/2006 Student & Parent of the Year Luncheon -----\$40
- ☐ (SEB) Fri., 3/3/2006 Seal of Excellence Banquet -----\$60
- ☐ (ALS) Fri., 3/3/2006 Administrators' Leadership Symposium I am an Administrator and will be attending this event.

☐ YES, I would like vegetarian meals.

Total Event Tickets \$

3. SCHOOL SITE VISITS

☐ Wed., 3/1/2006 – School Site Visit -----\$30
Indicate program of preference (See detailed school site programs on page 10 for descriptions and program number.)

1st Choice: _____

2nd Choice: _____

Total School Site Visit Fees \$

4. CABA MEMBERSHIP

To take advantage of discounted registration fees, make sure your CABA membership status is current as of March 31, 2006.

☐ New ☐ Renewal

- ☐ Administrator -----\$75
- ☐ Teacher -----\$55
- ☐ Para Educator -----\$30
- ☐ Parent/Community (Not employed by a school district) -----\$15
- ☐ Student (Currently enrolled in an undergraduate program) -----\$15

Total Membership Fees \$

GRAND TOTAL \$

5. PAYMENT METHOD

Check Number (Please make all checks payable to CABA)

P.O. No.

School District

MasterCard/Visa/AMEX No.

Exp. Date

Signature

Date



Please read the reverse side for "Instructions and Information" and return with total payment to:
P.O. Box 51204, Los Angeles, CA 90051-5504

Postmark deadline: December 15, 2005
For registration information, please contact: 1-866-814-CABA
Customerservice@bilingualeducation.org

Pre-Conference Activity

Outstanding Pre-Conference Activity featuring the WIT Awards

Come celebrate with us as we honor exceptional educators at
The WIT (Wisdom, Inspiration & Tenacity) Awards

Here's your chance to participate in a fun experience while you join in honoring the accomplishments of fellow outstanding educators. Come celebrate with us as we present our 3rd Annual WIT (Wisdom, Inspiration and Tenacity) Awards where we will be honoring exceptional educators.

CABE and Farmers Insurance have joined together to identify and give recognition to those educators who have demonstrated keen insight and overcome barriers in their quest to provide our students with outstanding educational experiences. The Farmers WIT Awards has become a "don't miss" event.

Join us on Wednesday, March 1, 2006, at the San José Marriott for this wonderful event. Guests will be invited to partake in a complimentary morning snack prior to the award ceremony. Attendees will also get a preview of new multicultural teaching materials available FREE to educators.

Space is limited so register right away.

Brought to you by:



California Association for Bilingual Education

CABE 2006 Registration Instructions

1. REGISTRATION FORM

Use a separate "Registration Form" for each registrant. If more forms are needed, please make photocopies (front & back) or order additional copies from CABE. You may also download the forms at www.bilingualeducation.org. **Only parents not employed by any school district may register as a "Parent". The "Student" rate only applies to students enrolled in an undergraduate degree program or high school.** CABE may ask for proof if necessary. Retain a copy of both sides of this form for your records.

2. AMERICANS WITH DISABILITIES ACT

Under Provisions of Title I of the Americans with Disabilities Act, please check if you require any special arrangements. You will be contacted by phone or at the address you list to make specific arrangements/and or accommodations.

3. REGISTRATION PROCESSING

Please type or print clearly the information requested. Information from this form will be used to print conference badges. Additionally, due to delays that can occur in school district mail delivery systems, **use an address which provides the most expeditious means to mail your confirmation and conference materials.** Send your payment and form(s) to CABE 2005 Registration, P.O. Box 51204, Los Angeles, CA 90051-5504. You will be mailed registration status information prior to January 31, 2006.

4. POSTMARK DEADLINE

Pre-Registration Postmark Deadline is December 15, 2005. On-line Registration deadline is February 24, 2006. In order to allow time to process all applications and mail conference confirmation and materials to all pre-registrants prior to January 31, 2006, **the postmark deadline will be strictly adhered to.** We encourage you to pre-register to avoid waiting in line and additional costs.

5. PAYMENT REQUIREMENTS

Avoid any delays, registration will not be processed unless it is accompanied with payment in full. **Make checks payable to CABE.** Purchase orders should be used only when absolutely necessary and required payment within 30 days. MasterCard, Visa and American Express will be accepted as long as the complete number, expiration date and signature are included on the front of this form. Purchase orders and institutional checks for more than one person must be accompanied by a separate registration form for each individual and the purchase order must list each attendee's name. Requisition forms are not an acceptable form of payment and will not be processed. **A \$50 charge will be assessed for all returned checks.**

6. REQUESTS FOR CANCELATION REFUNDS

All requests for refunds must be made in writing and submitted to CABE Headquarters prior to January 15, 2006. Refunds will be processed and mailed out following the conference. A 20% processing fee will be assessed on all requests. **There will be no refunds or exchanges for meal or event tickets. Refund requests postmarked after January 15, 2006, will not be honored.**

7. REPLACEMENT OF BADGES AND TICKETS

Requests for replacement of badges and event tickets, for any reason, will be charged at the original full registration price. There is no refund for replaced badges and tickets. **NO EXCEPTIONS.**

8. SUBSTITUTIONS

Names will be substituted on registration forms only upon receipt of a written request. If a Registration Badge has been received, it must be returned with the request. **No substitutions will be accepted after January 15, 2006.**

9. MEMBERSHIP VERIFICATION

Please note: In order to receive a membership discount, each conference participant submitting member level fees must be a member in good standing as of March 31, 2006. If it is determined that membership is not current, conference attendee will be invoiced for either membership dues owed or the balance of the non-member rate for the conference.

10. ONE-DAY PASSES

For individuals unable to attend for more than one day, you may purchase a One-Day Pass. Please indicate which day you will be attending. If the day is not indicated, we will assume that you will be attending Thursday, March 2, 2006, and will process as such. One-day passes can only be used for the designated date.

11. COMPLIMENTARY PASSES

If you are entitled to complimentary registration (Presenters and Planning Committee) **DO NOT COMPLETE THIS FORM.** Please contact the CABE Office via email at info@bilingualeducation.org and request a "Form for Complimentary Registration".

12. STAFF DEVELOPMENT DAY INCENTIVE

For those school districts designating CABE 2006 as "Staff Development Day(s)", a registration incentive of one free registration (excluding meals) is available to groups submitting 25 "like" registrations. Like registrations refer to either full four-day passes or one-day passes, not which category they fall into (member, non-member, teacher, administrator, para-educator or parent...). All 25 registrations must be submitted on the same Purchase Order. To take advantage of this opportunity, please submit a registration form with the staff member's name who will use the pass, and mark the appropriate box on the registration form.

13. SCHOOL SITE VISITS

Buses for School Site Visits will depart from San José McEnery Convention Center at 8:30 a.m. **sharp** on Wednesday, March 1, 2006, and return by 2:00 p.m. Confirmation letters and additional information will be sent. Spaces are limited and will be filled in the order received. Passes will not be available on-site and are **not refundable.** Please review the list of programs on page 10. Choose two (2) programs, which you would like to visit and list their number on the Registration Form as a first choice and second choice.

Pre-Conference Activity

Registration Form

Pre-Conference Activity

Join us on Wednesday, March 1, 2006, at the San José Marriott for this wonderful event. Guests will be invited to partake in a complimentary morning snack prior to the award ceremony. Attendees will also get a preview of new multicultural teaching materials available FREE to educators.

Space is limited so register right away.

Number of Tickets	Event	Price	Total
	The WIT Awards 10:30 a.m. - 12:30 p.m.	FREE	
Total for All Events			\$

First Name _____		Last Name _____	
Street Address _____			
City _____		State _____	Zip _____
Home Tel _____		Work Tel _____	
Email _____			



Please send this completed registration form to:
CABE 2006, Pre-Conference Activity
16033 E. San Bernadino Road, Covina, CA 91722-3900

For registration information, please contact:
Tel: 626-814-4441 Fax: 626-814-4640 Email: info@bilingualeducation.org

HOUSING RESERVATION FORM

CABE 31st Annual Conference

March 1 - 4, 2006

ONLINE RESERVATIONS: www.bilingualeducation.org

PLEASE TYPE OR PRINT CLEARLY:

Occupant Name _____

Sharing with _____

Arrival Date _____ Departure Date _____

SEND CONFIRMATION TO:

Name _____

Organization _____

Address _____

City _____

State/Province _____

Zip/Postal Code _____

Country _____

Telephone _____

Fax _____

Email Address _____

*Reservation will not be processed without a form of guarantee.

Type of Card _____

Account # _____

Expires _____

Signature _____

☐ Check must accompany form in the amount of \$163 per room
(payable to SJCVB) if credit card is not provided
- No purchase orders will be accepted.

ACCOMMODATIONS:

Guest room reservations at the official hotels are handled on a first-come, first-serve basis. Requests for guest rooms should be faxed, mailed or emailed to the San José Housing Bureau. Failure to receive your first choice does not constitute an error. If accommodations are not available at the hotel of your choice, comparable reservations will be made at other participating hotels.

GUARANTEED RESERVATIONS ONLY:

All reservations must be guaranteed at the time of your request to the housing bureau. **Reservations will not be processed without a form of guarantee.* You may do so by using a major credit card or an advanced check deposit with your housing form. Your credit card is only a form of guarantee.

DEADLINES:

For new reservations, all housing requests must be received in the office no later than **January 26, 2006**.

CHANGES AND CANCELLATION:

To cancel or make changes to reservations, contact the Housing Bureau until the cut-off date of **February 14, 2006** - date subject to change for each hotel.

CONVENTION HOTELS:

HOTELS	1 PRS	2 PPL	3PPL	4PPL
Crowne Plaza	\$139	\$139	\$149	\$159
Fairmont San Jose	\$163	\$163	\$188	\$213
Hilton San Jose & Towers	\$149	\$149	\$169	\$179
The Sainte Claire	\$135	\$135	\$145	\$155
San Jose Marriott	\$145	\$145	\$170	\$195

Note: Rates are subject to a 10.05% occupancy tax.
Hotels are within walking distance of the San José McEnery Convention Center.

HOTEL PREFERENCE:

1st Choice _____ 2nd _____ 3rd _____

TYPE OF ACCOMMODATION: (Check One)

Four people maximum each room; No rollaways in Double/Double rooms per hotel fire code.

- | | |
|---|--------------------------------------|
| <input type="checkbox"/> Single (1 bed, 1 person) | <input type="checkbox"/> Non-Smoking |
| <input type="checkbox"/> Double (1 bed, 2 people) | <input type="checkbox"/> Smoking |
| <input type="checkbox"/> Double/Double (2 beds, 2-4 people) | |
| <input type="checkbox"/> Require special facilities in accordance with the American Disabilities Act. | |
| <input type="checkbox"/> Special request: _____ | |

RESERVE ONLINE: WWW.bilingualeducation.org

or RETURN THIS FORM TO:

email: cabe@sanjose.org

San José CVB Housing

Fax: 408-293-3705

408 Almaden Blvd., San Jose, CA 95110

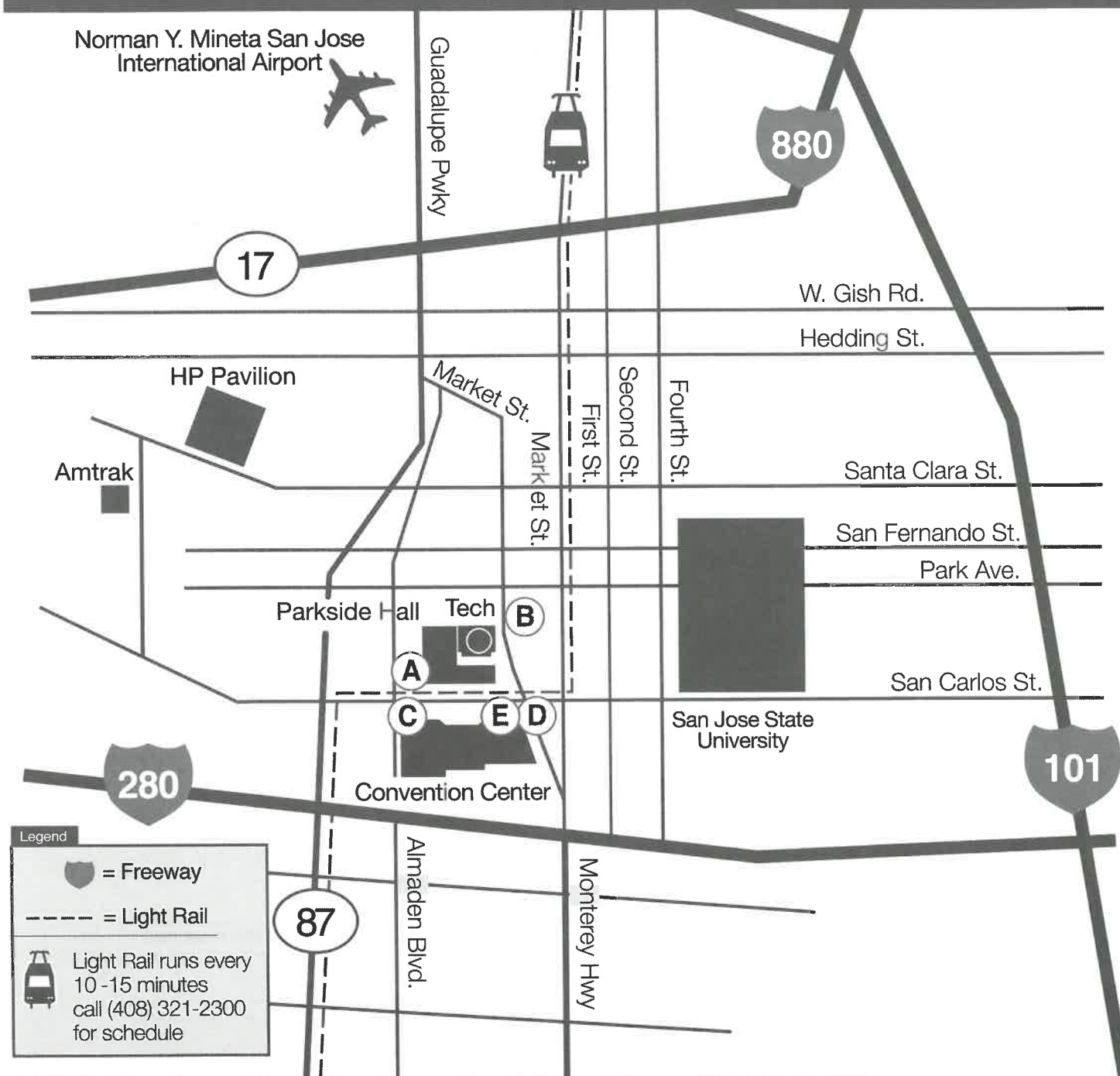
Housing Line: 408-792-4168



Convention & Visitors Bureau

DOWNTOWN SAN JOSE MAPCABE 31st Annual Conference

March 1 - 4, 2006

**Hotels**

A. Crowne Plaza
282 Almaden Blvd.

B. Fairmont San Jose
170 S. Market St.

C. Hilton San Jose
300 Almaden Blvd.

D. The Sainte Claire
302 S. Market St.

E. San Jose Marriott
301 S. Market St.

School Site Visits

The following programs will be available for School Site Visits. Please make your selection and enter your choice on the conference registration form. (e.g. Elementary Dual Immersion: 4a)

1. General Programs/ Services for Second Language Learners

Language Assessment Center (K-12): Assessment Centers are locations specifically created for identification of, and placement services for, English Learners. The assessment information is provided to schools ensuring English Learners placement into instructional programs that meet their linguistic/ instructional needs.

2. Family Literacy (K-12)

Family Literacy Programs are intergenerational literacy programs that involve parents and their children. Program's focus is on literacy strategies parents and other adults can use at home to develop and maintain the home language.

3. Newcomer Program, Elementary Level

This program is for newly arrived English Learner immigrant students. Students attend this program to learn "survival" English. These programs are meant to be temporary placements until students learn enough English to be placed into other linguistically appropriate school programs.

4. Elementary Programs

a. Two-Way Bilingual/Dual Immersion: These programs have a strong, comprehensive instructional design that includes English Language Development, primary language instruction and SDAIE (Specially Designed Academic Instruction in English/other non-English language). There are two language groups represented in the Two-Way classroom: English Learners and English proficient students who serve as language models for each other during the instructional day. The goal of this program is to promote high levels of biliteracy in two languages.

b. Structured English Immersion (SEI): Instruction is overwhelmingly in English, incorporating a strong and purposeful English Language Development program and sheltered English strategies. Primary language assistance may be provided through text books and appropriate strategies including Preview/Review methods.

c. Elementary Transitional Bilingual Programs (TBE): The purpose of these programs is to use the native language of English Learners as a bridge while they transfer into total English instruction. Instruction in TBE programs develops and enriches the students' native language as they learn English, so that students can access the total curriculum.

5. Middle School Programs

- a. Transitional Bilingual Programs (TBE)
- b. Other- e.g., ELD and SDAIE

6. High School Programs

- a. Transitional Bilingual Programs (TBE)
- b. Other- e.g., ELD and SDAIE

Hotel Reservations

All hotels listed on the CABE 2006 Housing Form offer conference rates. Some hotels are conveniently located within walking distance of conference activities. Complimentary ground transportation will be offered for hotels that are not within walking distance. Conference participants can make CABE 2006 housing reservations with the San José Convention & Visitors Bureau Housing. Refer to the enclosed housing form for rates and deadlines. Submit your reservations in a timely manner to secure conference rates at the hotel of your choice.

Car Rental

Enterprise Rent-a-Car has arranged special discounted rates for all conference attendees. Present this special discount code to receive your discounted rates: 32V2751. Call toll free 1-800-Rent-A-Car or book on-line at www.enterprise.com. For questions, call Diane Sanchez (Southern CA Sales Manager) at (626) 633 - 1210.

Please Note: Enterprise rents to customers who are 21 years of age and older with a valid drivers license (int'l accepted) and a major credit card. This offer may not be used in conjunction with any other discount offers/coupons. Enterprise is located at most major airports.

Auto Travel and Parking

See enclosed map for details on directions to the conference. Parking is available at the San José McEnery Convention Center, including in and out daily passes. The San José Convention Center parking structure opens daily at 6:00 a.m. For additional information, visit their website at www.sjcc.com.

CABE 2006 attendees can also take advantage of the Light Rail system, with stops conveniently located near the San José Convention Center (SJCC) and which serves as an easily accessible source of transportation between SJCC and the various sites and activities of San José and surrounding cities. For advance planning visit their website at www.vta.org.

After Conference/Weekend Activities

If you and your family would like to stay in San José for the weekend, check for availability of the special conference hotel rates with your hotel. A useful site for activities and information in downtown San José is www.sjdowntown.com. The following is a partial list of after conference/weekend activities available in the San José area:

**Shopping**

- * Santana Row
- * Antique Row

Family Fun

- * Paramount's Great America
- * Paramount's Bonfante Gardens Family Theme Park
- * Raging Waters

Museums

- * Children's Discovery Museum of San Jose
- * History of San Jose
- * Peralta Adobe & Fallon House
- * Rosicrucian Egyptian Museum
- * San Jose Museum of Art
- * San Jose Museum of Quilts & Textiles
- * Tech Museum of Innovation.

Special Attractions

- * Winchester Mystery House
- * San José's Spartan Stadium.
- * San José's Municipal Stadium
- * American Musical Theatre of San Jose

Air Travel

CABE recommends that conference participants visit www.southwest.com to determine if your travel itinerary is available through Southwest Airlines, to review possible flight options and to obtain the best available air fare. Another recommended travel site is www.cheaptickets.com. San José International Airport is now accessible via Jet Blue airlines. Remember, booking flights early allows for lower rates!

Thursday, March 2, 2006**Distinguished Keynote Speaker - General Session (8:30 a.m. - 10:00 a.m.)****Tove Skutnabb-Kangas**

University of Roskilde, Denmark & Åbo Akademi University Vasa, Finland.

Tove Skutnabb-Kangas' keynote address titled, "Using our many voices NOW-some arguments of encouragement", will relate multilingual education and the role of language to the global issues faced today. It will look at some of the arguments for multilingualism that we can use to make more people raise their voices. Her research interests include: linguistic human rights, linguistic imperialism, bilingualism, multilingual education, language and power, subtractive spread of English, and the relationship between linguistic (and cultural) diversity and biodiversity. She is the recipient of the 2003 Linguapax Award and the 2003 Carl Axel Gottlund Award. Some of her books in English are *Bilingualism or not - the education of minorities* (1984); *Minority Education: from shame to struggle*, (1988); *Linguistic Human Rights. Overcoming linguistic discrimination*, (1994); *Multilingualism for All*, ed. (1995); *Language, a Right and Resource: Approaching Linguistic Human Rights* (1999).

Featured Speakers**Alma Flor Ada and F. Isabel Campoy**

University of San Francisco

Noted authors who work in schools with teachers, children and parents and teach about the culture and civilization of the Hispanic world. Each of them has written numerous books and other teacher materials for use in multicultural and bilingual settings including their most recent book, *Authors in the Classroom: A Transformative Process*.

**Robert Phillipson**

Copenhagen Business School
Department of English

Fields of interest include: language pedagogy and multi-disciplinary approaches to language learning; the role of English worldwide—why it has expanded, and whose interests it serves in different parts of the world; language policy; and linguistic human rights. He also has many publications including his book, *Rights to language: equity, power and education*.

**Ana Celia Zentella (Invited)**

University of California, San Diego

Identifies herself as an anthropological linguist and is a central figure in the study of U.S. Latino varieties of Spanish and English, bilingualism, Spanglish, and English-only laws. Her publications include, *Growing up Bilingual: Puerto Rican Children in New York*.

**Terry Wiley and Wayne Wright**

Arizona State University
University of Texas, San Antonio

Research includes the impact of the Unz (English for the Children) initiatives on the education of ELL students, and raises serious questions regarding the adequacy of English-only approaches in fulfilling the legal mandates of federal case law and the accountability requirements of No Child Left Behind.

**Kathryn Lindholm-Leary**

San José State University

Noted expert in the field of dual language education programs for 20 years and has evaluated over 30 programs; helped to establish programs in over 50 school districts in 10 states and authored or co-authored two books including *Dual Language Education*.

**Laurie Olsen**

California Tomorrow

Directed the research and has been the principal author of California Tomorrow's publications, *Crossing the Schoolhouse Border: Immigrant Students in the California Public Schools* and *The Unfinished Journey: Restructuring Schools in a Diverse Society*.

**Fred Genesee**

McGill University

Current research includes alternative forms of education for language minority students and bilingual acquisition among pre-school children. He has authored many books including, *Educating Second Language Children: The Whole Child, The Whole Curriculum, and the Whole Community*.

Thursday, March 2, 2006

Full Day Institutes (10:30 a.m. - 5:00 p.m.)

Promoting Critical Literacy and Critical Pedagogy in Critical Times

The presenters will share culturally and linguistically responsive processes, resources, and activities to be used in K-12, teacher education and popular education community-based programs. Participants will also identify their ideological orientations towards literacy, language development, and language policy and programming and develop ideas for infusing them into the classroom.

Presenter(s): Theresa Montañón, Carlos Valle

Half Day Institutes (2:15 p.m. - 5:15 p.m.)

Featured Institute



Raising the Achievement of African American Students

Enid Lee, Enidlee Consultants Inc.

Recognition, valuing and positive use of a student's prior knowledge, language, culture, communal life, familial life and group history are prerequisites for a successful learning experience. The legacy of institutional racism has denied these prerequisites to those groups of students who fare the worst in our schools. This institute will provide the opportunity for participants to examine an equity-centered framework.

Academic Literacy Development Technology Driven

Reading/Writing Connection

This institute focuses on research-based theories, approaches, and instructional strategies that support academic literacy development for English learners.

Presenter(s): Margaret Solomon, Jose Lalas

An Intervention Strategy That Really Works

English Learners who have received instruction in primarily English classroom settings and who are having difficulty in developing English literacy skills are at risk for special education referral. This session will share research and steps used to achieve student success.

Presenter(s): Magdalena Ruz Gonzalez, Alejandra Estorga

Asian and Pacific American Institute

This institute will provide information and effective hands-on strategies for integrating Asian and Pacific American experiences and multicultural literature about multiracial and biracial identities into the K-12 curriculum.

Presenter(s): Clara Park

Balancing Reading and Language Learning

This institute will focus on helping English learners become proficient readers and English speakers by implementing all the important components of a balanced literacy program including shared reading, guided reading and independent reading.

Presenter(s): Mary Cappellini

Six Keys to Managing Successful Programs for English Learners

The purpose of this session is to provide school district and school site administrators with tools for implementing successful programs for English Learners.

Presenter(s): Norm Gold

La Ceremonia de Iniciación: A Middle School Spanish Language Arts Thematic Unit of Study

En este instituto se presentará una unidad tematica que tiene como objetivo profundizar en el tema literario con el fin de producir una composición analítica. Los participantes tendrán la oportunidad de observar y analizar una lección completa.

Presenter(s): James Orihuela, Gisela O'Brien

Migración y cultura en la redefinición de la identidad:

El caso de los mixtecos de México

La exposición trata de explicar el impacto de la migración dentro y fuera del territorio y el fortalecimiento de la identidad através de la historia, lengua y cultura.

Presenter(s): Rogelio Bolanos

The California Mathematics Council's Math Festival

Program: A School-wide Celebration of Mathematics

A Math Festival is a new way to celebrate mathematics with a whole school community! It is a standards-based, multi-station, hands-on interactive learning experience accessible to Kindergarten-8th grade students of all languages.

Presenter(s): Paul Giganti, Harold Asturias

Using Data to Build Better Readers: Implications for Teaching English Learners

Effective reading instruction for English Learners depends on the skillful use of classroom data. Data allow teachers/administrators to identify effective and ineffective instructional practices, monitor student progress, and make timely adjustments in instruction to ensure that all students achieve maximum growth in reading.

Presenter(s): Dennis Fox

Como enfrentar comportamientos negativos de los adolescentes

La presentación es diseñada para proveer a los padres estrategias efectivas para enfrentar comportamientos destructivos en sus hijos. Durante el instituto los padres podrán contemplar estrategias de prevención para desarrollar una relación positiva entre padres e hijos.

Presenter(s): Lucio Padilla

La educación universitaria esta al alcance de sus hijos

En esta presentación, hablaremos sobre como preparar y motivar a sus hijos para que continuen con sus estudios universitarios.

Presenter(s): Beau Kelly Menchaca, Tomás Hernández

Friday, March 3, 2006

Distinguished Keynote Speaker (8:30 a.m. - 10:00 a.m.)



Gloria Ladson-Billings

President of the American Educational Research Association
University of Wisconsin-Madison

Gloria Ladson-Billings' keynote is titled "En la lengua de mi casa: Teaching All students Well". Her research examines the pedagogical practices of teachers who are successful with African American students, while also investigating Critical Race Theory applications to education. Ladson-Billings is the author of the critically acclaimed book, *The Dreamkeepers: Successful teachers of African American children*, *Crossing over to Canaan: The journey of new teachers in diverse classrooms*, *Beyond the Big House: African American Educators on Teacher Education*, and numerous journal articles and book chapters. She is the former editor of the *American Educational Research Journal* and a member of several editorial boards. Her work has won numerous scholarly awards including the H. I. Romnes Faculty Fellowship, The Spencer Post-doctoral Fellowship, and the Palmer O. Johnson outstanding research award. In 2004 she received the George and Louise Spindler Award from the Council on Anthropology and Education for significant and ongoing contributions to the field of educational anthropology and in 2005 she was elected to the National Academy of Education.

Special Event (10:15 a.m. - 12:15 p.m.)

Administrative Leadership Symposium

Educating English Language Learners: A Synthesis of Research Evidence

Moderator: Donna Christian, Center for Applied Linguistics

Panel Members: William M. Saunders, University of California, Los Angeles
Fred Genesee, McGill University, Montreal, Canada
Kathryn Lindholm-Leary, San José State University

A panel of well-known researchers will present their findings from a synthesis of the scientific research on English Learners in the areas of: Oral Language Development among English Learners; Literacy Development in English Learners; Crosslinguistic and Crossmodal Relationships; and on the Academic Achievement of English Learners. This session will be an interactive discussion of the major research findings in the area of quality programs and indicators for student success.

School leaders---bring a question or challenge about implementing effective programs for second language programs.

Friday, March 3, 2006

Featured Speakers



Noma LeMoine

Los Angeles Unified School District

A speech pathologist and educator by training and experience, and director of the project that resulted in the creation and publication of *English for Your Success: a Language Development Program for African American Children*.



Vera Gutiérrez-Clellen

San Diego State University

Research focuses on the language development and disorders of bilingual children. She was Co-Principal Investigator of a contract funded by the National Institute of Deafness and Other Communicative Disorders to develop and validate a language test for children speaking non-standard English.



Barbara Flores

California State University,
San Bernardino

A teacher educator and professor who for the past ten years has been engaged in collaborative action research with teachers and administrators. She coauthored *Reading in a Bilingual Classroom: Literacy and Biliteracy* and has published various articles and chapters in journals and books.



Francisco Jiménez

Santa Clara University

Has published and edited several books on Mexican and Mexican American literature and has written his own collection of stories based on his childhood. His collection of autobiographical short stories, *The Circuit: Stories from the Life of a Migrant Child*, was selected a Booklist Editors' Choice and has received several literary awards.



Kathy Escamilla

University of Colorado at Boulder

Research interests include the areas of Curriculum and the Study of Schooling with an emphasis in Bilingual-Bicultural Education. She has many publications including her book *Instrumento de Observación de los Logros de la Lecto-escritura Inicial*.



Aída Walqui

West Ed

As Director of Teacher Professional Development, she is responsible for collaborating with teacher professional development efforts and leading the evolution of an organizational commitment to supporting teachers throughout their careers from recruitment and preservice through induction and life-long learning. She has authored two books and a number of articles such as "Contextual Factors in Second Language Acquisition".

Full Day Institutes (10:30 a.m. - 5:00 p.m.)

Our Social Project: Cultural Sanity and Brave Pedagogy: Life and Death in Ancient Mexico Alive and Well Today - Part I

Come experience the Preview/Review concept!!!! The first half in English will be an overview of the concepts and philosophical orientation that Mesoamerican Indigenous culture offers us daily as solutions to our many enigmas and struggles in education, both in classrooms and within educational culture and within ourselves as educators.

Presenter(s): Leticia Ramirez, Guillermo Marin, Nancy Jean Smith, Sylvia Solis

La autoestima a partir de la memoria historica y la identidad cultural: La muerte en México Antiguo hoy presente - Part II

La segunda parte de este taller pretende introducir a los participantes en una profunda reflexión sobre la importancia que tiene el conocimiento de la historia antigua de México y la identidad cultural, para fortalecer y acrecentar la autoestima de los estudiantes con herencia cultural mexicana.

Presenter(s): Leticia Ramirez, Guillermo Marin, Nancy Jean Smith, Sylvia Solis

Half Day Institutes (2:15 p.m. to 5:15 p.m.)



Featured Institute

Walking Across the room – An unfinished Conversation

Lee Muh Wah, StirFry Seminars

So often we ponder over how to begin a conversation with people who are culturally different from ourselves. How do we keep from offending someone? These are just some of the many barriers and fears that keep us apart and in silence. Together, we will explore the process, develop an authentic and meaningful relationship with each other, even in the midst of a conflict or misunderstanding.

Student Voice Through Electronic Portfolios

Capitalize on authentic portfolio assessment without the paper hassle. Using a non-linear, multimedia PowerPoint presentation, students produce electronic portfolios that include description, analysis, and reflection on all standards represented while integrating 21st century technology skills.

Presenter(s): Gil Díaz

Half Day Institutes continued on next page

Using Active Participation Strategies in the Classroom; Changing the Paradigm

Are you searching for new ways to get students actively involved in their learning? This lively demonstration offers educators an opportunity to learn innovative strategies/activities that promote listening, speaking, reading and writing skills.

Presenter(s): Kathy Reich, David Noyes

Arte Ganas - An Educational, Motivational, and Fun Mural Art Workshop

An Arte Ganas mural art workshop is a highly creative and motivational vehicle that uses music, art and lots of fun to enhance culture, team building and art skills for the classroom.

Presenter(s): Armando Cepeda

CLMER Professional Development for Teachers of English Learners: Standards - Based Differentiated ELD Instruction

CLMER developed and implemented a two-year professional development program for standards-based differentiated ELD instruction.

Presenter(s): Adel Nadeau

Dealing with Destructive Behavior in the Classroom with Preventive Discipline

The proposed presentation is designed to empower teachers and para-educators to deal with disruptive behaviors in the classroom.

Presenter(s): Lucio Padilla

Elegant Cows, Chinese Heroes and Folk Medicine: A Writing Assessment Guide for English Language Learners Grades 3-5

Teachers will briefly review scientifically-based research on EL student writing development.

Presenter(s): Lilia Sarmiento, Mary Ellen DeSantos

Evaluating English Learner Services and Results for Accountability and Instructional Improvement

This institute helps build the capacity of district/school site participants to evaluate English Learner performance and progress in academic English language development and core academic subjects.

Presenter(s): Robert Linqanti

(6:30 p.m. to 9:00 p.m.)

Seal of Excellence Banquet Speaker



Helen Zia

Journalist and Scholar

Helen Zia' keynote is titled *Crossing Boundaries: Social Change in the New Millennium*. She has covered Asian American communities and social and political movements for more than twenty years. In her acclaimed book, *Asian American Dreams: The Emergence of an American People*, Zia interweaves the remarkable history of a people with her own unique journey as a pioneer activist and writer. The result is a riveting and incisive epic narrative, which, like her lectures, brings clarity and advocacy to the national dialog for equality, inclusion and justice. Zia is also a contributing editor to *Ms. Magazine*, where she was formerly executive editor and her articles, essays, and reviews have appeared in numerous newspapers, magazines and anthologies. She also is the editor of *Notable Asian Americans*.

Language Development and Strategies that Simultaneously Enhance Language and Content Learning in Dual Language Programs

This session will help educators in a dual immersion classroom bolster their understanding of language development levels through the use of actual student videos.

Presenter(s): Aldo Ramírez, Alejandro López

Meaningful Literacy Activities for Children, Families and Teachers

This session presents a culturally responsive approach for preparing students to explore their families' meaningful life experiences. These activities transform curriculum and parent/teacher relationships, while simultaneously incorporating California subject matter standards.

Presenter(s): Irene Villanueva, Alejandra López

Native American Language Instruction: The Method, The Purpose and the Passion

This presentation will include an overview and application of the communication-based instructional method for teaching language which will be demonstrated through a California Native Language, and will include best practices that can be used with any language.

Presenter(s): Sarah E. Supahan

Educación universitaria para Nuestros Hijos:

Información y Planeación Temprana y Acertada

El propósito de este taller es de contestar estas preguntas y de proporcionarles a los padres un mejor entendimiento del sistema educativo de los Estados Unidos.

Presenter(s): Gloria Inzunza-Franco, Rosario Carachure

Project GLAD: Teaching Literacy Through Standards-Based, Differentiated Learning

Project GLAD, Guided Language Acquisition Design, is a model of staff training for language acquisition. Teachers are trained to deliver standards-based instruction that promotes academic language and literacy.

Presenter(s): Kate Wyffels, Regina M. Rosenzweig

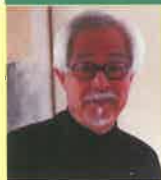
Don't Miss

SUPER SATURDAY

March 4, 2006

CABE 2006 is planning a very special day for conference attendees. We start the day with an exciting distinguished speaker general session highlighting a noted author and illustrator. After this presentation, we will have four exceptional special presentations with outstanding featured speakers who are experts in the education of English Learners.

Distinguished Keynote Speaker (9:00 a.m. - 10:30 a.m.)



Allen Say

Author and Illustrator

Allen Say was born in Yokohama, Japan, in 1937. He dreamed of becoming a cartoonist from the age of six, and, at age twelve, apprenticed himself to his favorite cartoonist, Noro Shinpei. For the next four years, Say learned to draw and paint under the direction of Noro, who has remained Say's mentor. Say illustrated his first children's book — published in 1972 — in a photo studio between shooting assignments. For years, Say continued writing and illustrating children's books on a part-time basis. But in 1987, while illustrating *The Boy of the Three Year Nap* (Caldecott Honor Medal), he recaptured the joy he had known as a boy working in his master's studio. It was then that Say decided to make a full commitment to doing what he loves best: writing and illustrating children's books. Since then he has written and illustrated many books, including *Grandfather's Journey*, winner of the 1994 Caldecott Medal, *Tree of Cranes*, *Allison*, and most recently *Tea with Milk*, *The Sign Painter*, and *Home of the Brave* (April 2002).

Special Featured Presentations



Jim Cummins

University of Toronto, Canada

A leader in second language learning and literacy development research and author who has written and presented many works on second language learning and literacy development, including, *Language, Power and Pedagogy* and "e-Lective Language Learning: Design of a Computer-Assisted Text-Based ESL/EFL Learning System".



Eugene E. Garcia

Arizona State University

His research and main interest is in the areas of language and culture, early childhood education and diversity, equality, poverty, race and ethnicity. His latest book is *Teaching and Learning in Two Languages: Bilingualism and Schooling in the United States*.



Alvino Fantini

School of International Training, Vermont

Author of numerous articles and books, including *New Ways of Teaching Culture and Language Acquisition of a Bilingual Child: A Sociolinguistic Perspective*, a seminal account of his own children's bilingual upbringing. He has taught Bilingual Multicultural Education, Spanish Applied Linguistics, Intercultural Communications, and Language Acquisition and Learning.



José-Luis Orozco

Author and Recording Artist

Work involves drawing upon the rich heritage of the Spanish-speaking world. Through his music José-Luis Orozco has sought to expose a wider audience to Spanish language children's traditions and promote Latin American culture. His *Lírica Infantil-Diez Deditos* and *Cantamos y Aprendemos* video are used widely in classrooms.

Attendees can attend the featured presentations or attend a variety of excellent workshops.

Additionally, authors featured on Saturday will be available for book signings!

We acknowledge and thank our Honorary Chairs and Co-Chairs and this partial list of co-sponsors for their continuous support.

Honorary Chairs

Ardella Dailey
Alameda Unified School District

Bob Nuñez
East Side Union High School District

Manny Barbara
Oak Grove School District

Donna Alonzo Vaughan
Salinas City Elementary School District

Arlene Ackerman
San Francisco Unified School District

Don Iglesias
San José Unified School District

County Offices of Education

Alameda County Office of Education

Los Angeles County Office of Education

Orange County Department of Education

San Bernardino County Superintendent of Schools Office

School Districts

Azusa Unified School District

Chula Vista Elementary School District

East Side Union High School District

El Monte City School District

Glendale Unified School District

Franklin-McKinley School District

Montebello Unified School District

University and Organizational Co-Sponsors

Centro Barahona Center

Hartnell College - Center for Teacher Education

Co-Chairs

Hector Garcia
Alameda County Office of Education

Aurora M. Quevedo
East Side Union High School District

Kim Anh Vu
Oak Grove School District

Juvenal Luza
Salinas City Elementary School District

Mary Ellen Gallegos
San Francisco Unified School District

Rosa Molina & Norma Martinez-Palmer
San José Unified School District

San Diego County Office of Education

San Mateo County Office of Education

Ventura County Superintendent of Schools Office

Ocean View School District

Oxnard School District

Salinas City Elementary School District

San Francisco Unified School District

San José Unified School District

Sequoia Union High School District

Sweetwater Union High School District

West Fresno Elementary School District

Kids for the Bay

Los Angeles County Office of Education
Southern California Comprehensive Assistance Center

Courage to Act Begins with One Voice



California Association for Bilingual Education
16033 E. San Bernardino Road
Covina, California 91722-3900

Non-Profit Org.
U.S. Postage
PAID
Covina, CA
Permit No. 369

CABE 2006

If the addressee is unknown, please forward to an interested or potential participant

