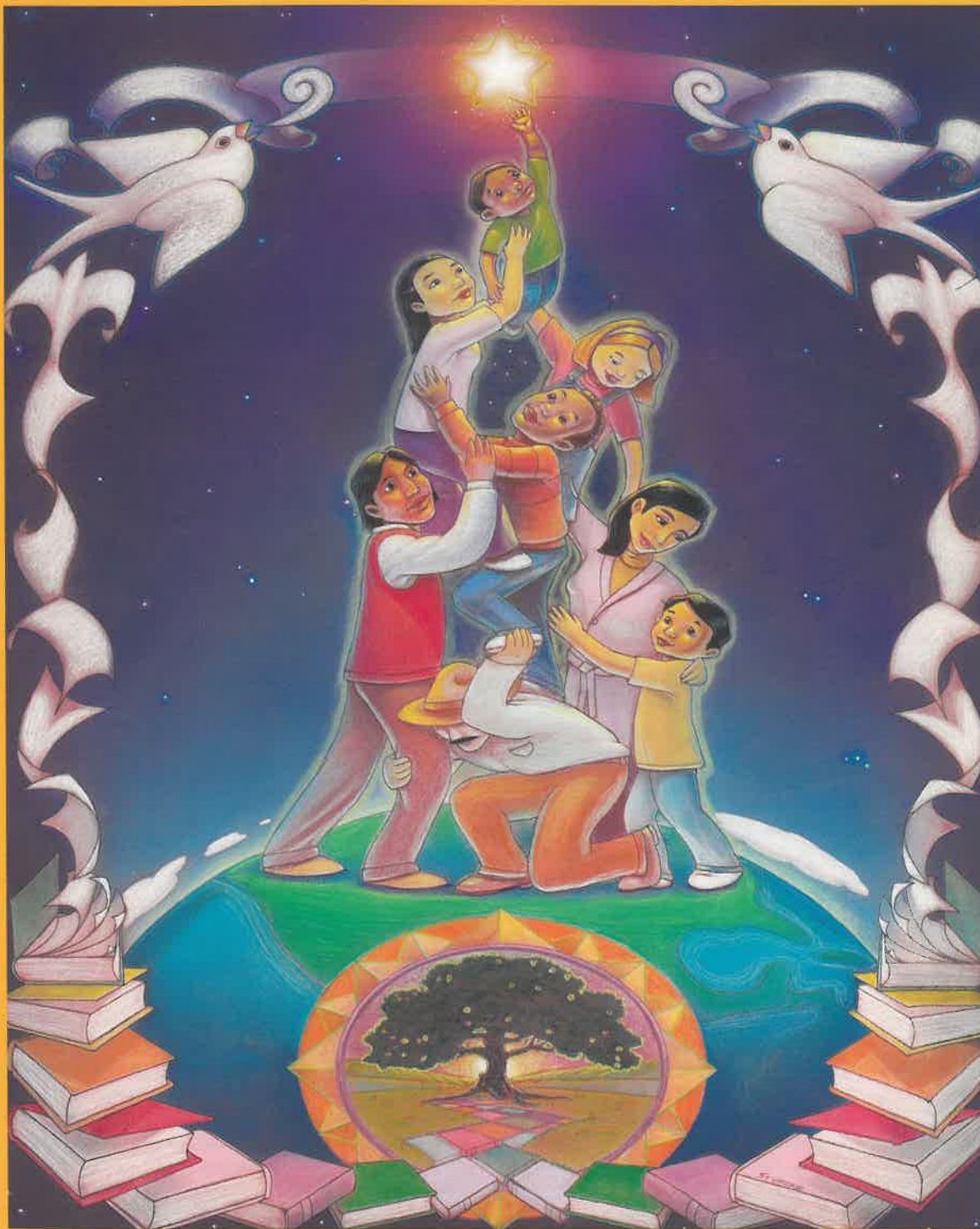


ca|be
2003

*Bilingual Education: a beacon of hope,
a Voice for Excellence,
a path to Success*

**Registration
Materials**



28th ANNUAL CONFERENCE

February 12-15, 2003 L.A. Convention Center Los Angeles, California

You are Invited to *CABE 2003*

CABE announces its 28th Annual Conference, "Bilingual Education: a beacon of hope, a voice for excellence, a path to success," to be held at the L. A. Convention Center, February 12-15, 2003, in Los Angeles, California. We are extremely pleased that this year's conference is being co-sponsored by the Los Angeles County Office of Education, the San Bernardino County Superintendent of Schools, Glendale Unified School District, the Los Angeles Unified School District, and the Montebello Unified School District.

The California Association for Bilingual Education (CABE) promotes and supports educational excellence for all students in California. To this end, CABE 2003 provides intensive staff development appropriate to the education of pre-school, elementary, secondary, adult, and university second language learners. Teachers and para-educators of Bilingual, ESL/ELD, Structured English Immersion, Special Education, Title I, Migrant Education and Specially Designed Academic Instruction in English (SDAIE) programs benefit from this staff development opportunity. Additionally, school district board members, superintendents, administrators, business leaders and parents also have the opportunity to learn more about the range of programs and strategies available to meet the instructional needs of English learners and other students learning a second or third language. The goal of CABE 2003 is to provide participants with the latest and most innovative strategies and research on schooling for second language learners.

Confirmed Keynote Speakers

Chauncey Veatch, National Teacher of the Year



Bilingual Teacher and CABE Member, Veatch's influence extends well beyond school hours. His connection with students and the community is in his heart. He understands the culture very well and has become a part of the community through his acceptance and sincerity, and by being genuine.

Paula Madison



Paula Madison is the President and General Manager of NBC4 (KNBC), NBC's owned and operated station in Los Angeles. Named to the position in November 2000, she is the first African American woman to become general manager at a network-owned station in a top five market. In addition to her duties as President and General Manager, Madison served as Vice President and Senior Vice President of Diversity.

Eric Liu, Author



Eric Liu has an extensive background in public life. He was a global policy speechwriter for the President Clinton and a director for legislative affairs at the National Security Council. He is the founder of the acclaimed grassroots journal, *The Next Progressive* and is also the author of *The Accidental Asian: Notes of a Native Speaker* (Random House), a collection of essays on racial identity that was a New York Times Notable Book of 1998.

Sandra Cisneros, Author



As a noted author (*The House on Mango Street*), Sandra Cisneros has garnered wide critical acclaim, as well as popular success, because she speaks to the many experiences shared by students of color. Drawing heavily upon her childhood experiences and ethnic heritage as the daughter of a Mexican father and Chicana mother, Cisneros addresses poverty, cultural suppression, self-identity, and gender roles in her fiction and poetry.

Featured Speakers

Thursday, February 13, 2003

Alma Flor Ada, Author, Professor University of San Francisco
Stephen Krashen, Researcher, Author and Professor Emeritus University of Southern California
J. David Ramirez, Executive Director, Researcher, CLMER, CSU, Long Beach
Donna Ford, Professor Ohio State University
Antonia Darder, Professor, University of Illinois
Miriam Met, Director K-12 Initiatives, National Foreign Language Center
Enid Lee, Director, Enidlee Consultants

Friday, February 14, 2003

Barbara Flores, Researcher, Author and Professor, CSU, San Bernardino
Kathryn Lindholm-Leary, Author, Researcher, Professor, CSU, San José
José Luis Orozco, Recording Artist, Author, Radio Host of Children's Programs
Aida Walqui-Van Lier, Director of Teacher Professional Development, WestED Equity Center
Alfredo Schifini, Consultant, Los Angeles County Office of Education
Ji-Mei Chang, Professor, San José State University
Kristin Brown, Senior Professional Development Specialist, CLMER

Saturday, February 15, 2003

Eugene Garcia, Professor, Dean, Arizona State University, School of Education
Gregorio Luke, Executive Director, Museum of Latin American Art
Jim Cummins, Author, Researcher Professor, University of Toronto
Francisca Sánchez, CABE President and Assistant Superintendent, San Bernardino County Superintendent of Schools

Highlights

CABE 2003

Workshops and Institutes

CABE 2003 features over 400 workshops and over 30 institutes (full and half-day) in all areas of education for English language learners and other students learning a second or third language. These professional development opportunities are scheduled throughout the 4 days of the conference, giving participants the opportunity to select workshops, featured speakers, institutes and other conference activities within their areas of interest. All sessions are held at the Los Angeles Convention Center. (Please see the institute highlights and the Preliminary Agenda page in this brochure.)

Exhibits

Exhibitors with instructional materials in all areas of education for English language learners, including technology, provide participants the opportunity to review and purchase the latest in materials and publications. (Check out the exclusive exhibit hours on the Preliminary Agenda page of this brochure for Exhibit Fair hours.)

Career Fair

School districts and various agencies participate at CABE 2003 with the primary goal of recruiting educational professionals for their districts and or organizations. This is the perfect opportunity to learn more about employment and professional opportunities within the educational field or other fields seeking bilingual personnel. A special Career Fair section with employment opportunities is also featured in the conference program. (See the Preliminary Agenda page in this brochure for Career Fair hours.)

Special Luncheons and Banquet/Dance

CABE 2003 features three special luncheons and a Friday night banquet. Thursday's luncheon highlights the CABE Teacher and Para-Educator of the Year Award presentations. Friday's luncheon honors the CABE Parent of the Year and Student Writing Contest Winners. CABE's Seal of Excellence banquet and dance are held on Friday evening featuring the CABE Seal of Excellence Awards for schools with outstanding programs. Saturday's luncheon honors the CABE Administrator of the Year. (For information about nomination opportunities for each of these awards please see the information mailed to CABE members or visit CABE's website at www.bilingualeducation.org. You may also contact CABE Headquarters at their new location (626-814-4441.)

CABE Fundraiser

CABE 2003 participants have the opportunity to network with new people, meet old friends, and dance at the annual CABE Fundraiser featuring a special well-known talent and band. This event helps CABE

raise additional funds for bilingual teacher and youth scholarships. Don't miss this opportunity to contribute to CABE and have fun at the same time!!

CABE 2003 Distinguished Speaker Special Closing Session

This year CABE 2003 is highlighting Sandra Cisneros, an exemplary Poet and Author, at a special Conference Closing Session on Saturday, February 15, 2003 from 2:00 pm to 4:00 pm. Join in the fun and hear Sandra Cisneros read her poems, short stories and excerpts from her new book.

University Credit

University credit through Cal Poly Pomona is available while attending workshops, institutes and featured speakers at CABE 2003. Registration and payment of fees can be made on-site at the University Credit table located in the West Hall Lobby area of the Los Angeles Convention Center. (Note: To earn university credit, participants must register for university credit prior to attending any workshops or institutes. For additional information on university credit requirements please contact Sarah Moussavi at (909) 869-5055 or email at smoussavi@csupomona.edu.)

High School Student Institute

This annual full-day institute for high school students takes place on Thursday, February 13, 2003, from 8:30 a.m. to 4:00 p.m. This institute focuses on leadership, literature, and culture relevant for high school students. Participating students receive a brown bag lunch with their registration for this event. (Please use the CABE registration form in this brochure to register high school students for this event.)

CABE 2003 Cyber Café

Don't miss out on the central hub of the Exhibitor's Hall! This year's Cyber Café provides attendees a location to check email, try new software, discover new technology trends, surf the web, and also meet friends. Mini-presentations and classes at the Cyber Café offer attendees an opportunity to obtain information on a wide range of technology topics, such as web development, software instruction, and technology for second-language learners.

CABE 2003 Artist

CABE welcomes Otto G. Stürcke as the official CABE 2003 Artist. Mr. Stürcke will be available for CABE 2003 poster signing at special hours during the conference.



Los Angeles Convention Center

Tuesday, February 11, 2003

12:00 p.m. - 5:00 p.m. Exhibitors Move-In, Los Angeles Convention Center, Level One-West Hall A

Wednesday, February 12, 2003

8:00 a.m. - 11:00 a.m. Exhibit/Career Fair Move-In and Set-up, Level One-West Hall A
 7:30 a.m. - 5:00 p.m. Registration and Tote Bag pick up at the Registration Area in the West Lobby
 8:00 a.m. - 2:00 p.m. School Site Visits
 10:00 a.m. - 4:00 p.m. JDA meeting
 12:00 noon - 4:00 p.m. Exhibit Hall Opening, Level One-West Hall A
 1:00 p.m. - 4:00 p.m. Pre-Conference Activities/Institutes/Economic Summit
 12:00 noon - 4:00 p.m. Parent Hospitality Room Opening, Level One-Concourse Hall Room 152
 4:30 p.m. - 6:30 p.m. Opening General Session - Keynote Address, Level One-West Hall B
 7:30 p.m. - 11:00 p.m. Membership Reception, Level One-Petree Hall

Thursday, February 13, 2003

7:30 a.m. - 5:00 p.m. Registration and Tote Bag pick-up at the Registration Area in the West Lobby
 7:30 a.m. - 5:00 p.m. Parent Hospitality Room in Level One-Concourse Hall Room 152
 8:30 a.m. - 4:00 p.m. High School Student Institute
 8:30 a.m. - 4:00 p.m. Full Day Institutes
 8:30 a.m. - 10:00 a.m. Workshops
 8:30 a.m. - 11:30 a.m. 1/2 Day Institutes
 9:00 a.m. - 6:00 p.m. Exhibits/Career Fair in Level One, West Hall A
 10:15 a.m. - 11:45 a.m. General Session in Level One, West Hall B
 10:15 a.m. - 11:45 a.m. Workshops and Featured Speakers
 12:00 noon - 1:30 p.m. Teacher and Para-Educator Recognition Luncheon in Level One, West Hall B
 12:15 p.m. - 1:30 p.m. Workshops and Featured Speakers
 2:00 p.m. - 5:00 p.m. 1/2 Day Institutes
 2:00 p.m. - 3:30 p.m. Workshops and Featured Speakers
 3:45 p.m. - 5:15 p.m. Workshops and Featured Speakers
 5:30 p.m. - 6:30 p.m. Membership Meeting in Level Two, Theater Room 411
 7:30 p.m. - 11:30 p.m. CABE Fundraiser in Level One-Petree Hall

Friday, February 14, 2003

7:30 a.m. - 5:00 p.m. Registration and Tote Bag pick-up at the Registration Area in the West Lobby
 7:30 a.m. - 5:00 p.m. Parent Hospitality Room in Level One, Concourse Hall Room 152
 8:30 a.m. - 4:00 p.m. Full Day Institutes
 8:30 a.m. - 11:30 a.m. 1/2 Day Institutes
 8:30 a.m. - 10:00 a.m. Workshops and Featured Speakers
 9:00 a.m. - 6:00 p.m. Exhibits/Career Fair in Level One-West Hall A
 9:00 a.m. - 12:00 noon Superintendent's Symposium
 10:15 a.m. - 11:45 a.m. Workshops and Featured Speakers
 12:00 noon - 1:30 p.m. Parent of the Year Awards and Student Essay Winners Luncheon in Level One-West Hall B
 12:15 p.m. - 1:30 p.m. Workshops and Featured Speakers
 2:00 p.m. - 5:00 p.m. 1/2 Day Institutes
 2:00 p.m. - 3:30 p.m. Workshops and Featured Speakers
 3:45 p.m. - 5:15 p.m. Workshops and Featured Speakers
 7:00 p.m. - 9:00 p.m. Seal of Excellence Awards Banquet, Level One-West Hall B
 9:00 p.m. - 1:00 a.m. CABE Dance in Level One-Petree Hall

Saturday, February 15, 2003

7:30 a.m. - 10:00 a.m. Registration and Tote Bag pick-up at the Registration Area in West Lobby
 8:00 a.m. - 2:00 p.m. Parent Hospitality Room in Level One-Concourse Hall Room 152
 8:30 a.m. - 11:30 a.m. 1/2 Day Institutes
 9:00 a.m. - 2:00 p.m. Exhibits/Career Fair in Level One-West Hall A
 9:00 a.m. - 10:15 a.m. Workshops and Featured Speakers
 10:30 a.m. - 11:45 a.m. Workshops and Featured Speakers
 12:00 noon - 1:30 p.m. Administrator of the Year Luncheon
 2:00 p.m. - 4:00 p.m. Special Presentation and Conference Closure in Level One, Petree Hall

Administration Leadership and Management

- Program planning, implementation and evaluation
- School organization/shared decision-making
- Supervision, evaluation, and compliance issues
- Recruitment and staff development
- Budget and finance issues
- Model programs
- Building quality programs

Asian Pacific American Education

- Program planning, strategies and implementation
- Research and evaluation

Assessment, Evaluation, and Accountability

- Reform issues, e.g., Standards
- Promotion and Retention
- Assessment/Testing Issues
- Assessment Instruments
- Data evaluation

Content Area Curriculum

- Literacy L1 or SDAIE
 - Literacy development in the primary language
 - Interactive journals, writer's workshop, and learning logs
 - Balanced literacy instruction
- Math L1 or SDAIE
 - Strategies for developing math from the concrete, symbolic, and conceptual level
 - The development of math and literacy
 - Integration of math with other curricular areas
 - Research based math programs
 - Computation/problem solving strategies and techniques
 - Strategies to access curriculum
- Science L1 or SDAIE
 - Science and computer literacy
 - Textbook science/classroom experiments/environmental science
 - Reading through science
 - Research based science programs
- Social Studies L1 or SDAIE
 - Cultural characteristics and differences
 - Approaches to literacy with a focus on social studies
 - Social studies and computer literacy
- Visual and Performing Arts L1 or SDAIE
 - Visual and performing arts integrated in other areas of the curriculum
 - Capitalizing on students' talents and creativity

CABE Leadership and Advocacy

- Policy Making/Legal and Political Issues
- CABE-Orientation priorities
- Chapter leadership
- Grass-roots organizing
- Media Training

Cooperative/Collaborative Learning

- Strategies for implementing cooperative learning
- Demonstration lessons and classroom materials
- Essential elements for English learners

Critical Pedagogy

- Problem posing and questioning
- Questioning power structures
- Participatory learning
- Strategies for developing voice and community

Dual Language/Two-Way Bilingual Immersion Programs

- Program planning, strategies and implementation
- Research and evaluation

English Language Development

- Content-based learning experiences
- Methodology, strategies, and sample lessons
- Demonstrations and classroom materials
- English literacy development

Heritage Language/Spanish for Spanish Speakers Programs

- Strategies
- Model programs
- Adult and K-12 student programs
- Spanish for Spanish Speakers
- African American Student Populations
- Standards based instruction

Integrated Content - L1 and SDAIE

- Theme development for content based integrated literacy
- Multiple intelligences through integrated content curriculum
- Models of integrated content based education
- Literature/language arts

Multicultural/Anti-Bias/Diversity Education

- Building upon students' cultural and linguistic backgrounds
- Student empowerment for academic success
- Multicultural studies in the classroom
- Anti-bias curriculum

Para-Educators

- Strategies for working with small groups
- Assisting with assessment and evaluation
- Providing primary language support
- Career ladders

Parent Involvement/Community Partnerships

- Workshops for parents on the public education system, special programs and services
- Parents as partners in education
- Parent advocacy and empowerment
- Workshops for educators on parent involvement

Policy Making/Legal and Political Issues

- Review of current legislative and policy issues
- Compliance regulations and equity issues

Preschool/Early Childhood Education

- Current research, models and curriculum
- Oral language and cognitive development
- Developmentally appropriate activities

Research

- Proven Models (3yrs+ data)
- Recent Studies
- Teacher Action Research Evaluation Reports
- Evaluation Research

Special Needs Education

- Gifted and Talented education/ High achievers
- Intervention strategies
- IEP development and parental input
- Current teaching methods/strategies
- Assessment and placement issues
- Inclusion
- Differentiated instruction/curriculum
- Educational program development
- Identification

*Student Leadership**Teacher Education*

- Professional Development
- Teacher Certification
- Teacher Preparation

Technology/Technology Integration

- Technology integration in schools
- Creative software for bilingual classrooms
- Creating access and equity in technology use and instruction

CABE 2003 Pre-Conference Activities

Wednesday, February 12, 2003

Pre-Conference Events and Opening General Session Highlights

Conference Registration—Los Angeles Convention Center—West Hall

Registration Opens at 7:30 a.m. and closes at 5:00 p.m. Participants, who are pre-registered and received their conference badges in the mail, can go directly to the West Hall Lobby--Tote Bag Pick-up area to receive their conference materials and join the pre-conference activities. Other registrants, who are pre-registered and **did not** receive their badge in the mail, can pick up badge and conference materials in the Concourse Foyer Area and West Hall Lobby area. **New** Registrants, that are not pre-registered, are invited to register for the conference at the "New Registration" area in the West Hall Lobby.

School Site Visits (8:00 a.m. - 2:00 p.m.)

Visit exemplary programs for English Learners—e.g., Two-way/dual language immersion, ELD. Participants have an opportunity to see these programs in action. Buses depart from the Los Angeles Convention Center at 8:00 a.m. and return at 2:00 p.m. in time to participate in the Opening General Session. Please indicate participation and selection of school site (first and second choice—see descriptions of program types on page 13) to this event on the CABE 2003 Conference Registration Form in the appropriate section of this brochure. (Please note that there is a fee of \$30 to participate in this event.)

Joint Delegate Assembly (JDA) (10:00 a.m. - 4:00 p.m.)

CABE chapter leaders and delegates come together to learn, network, share best practices and plan for regional and chapter activities at the local level at this semi-annual JDA session. Participants receive an overview of the workshops, featured speakers, and institutes featured in the CABE Leadership strand. (Please note: For CABE Chapter Presidents/Designees only)

Economic Summit (1:00 p.m. - 3:00 p.m.)

Join in the dialogue about the importance of bilingualism for the 21st Century. Hear future-oriented business, community and educational leaders discuss the many powerful benefits available to students who are literate in two or more languages. A panel of experts explores issues of language diversity, bilingualism and multilingualism in the context of an educated, biliterate workforce that bring linguistic, economic, cultural and social assets to the state and to democratic participation in the community.

Exhibit Hall Opening (12:00 p.m. - 4:00 p.m.)

Visit the Exhibit West Hall A before the Opening General Session and the conference formally opens. Participants have the opportunity to preview materials and other events at the Exhibitor/Career Fair as a first day, pre-conference activity.

CABE 2003 has exciting pre-conference activities planned!

Museum of Tolerance Tour (8:00 a.m. to 2:30 p.m.)

Participants will deepen their understanding of the impact of social justice issues and challenge their thinking about providing educational equity and engaging students in social action to improve communities. Bus pick-up is at 7:15 a.m. and participants return at 2:30 p.m. before the Opening General Session. (Please note that there is a fee of \$25 to participate in this event. Space is limited, and all participants must pre-register and use the special event registration form included in this brochure.)

Los Angeles Central Library—Facing History and Ourselves Exhibit Preview (9:30 a.m. to 3:00 p.m.)

Facing History and Ourselves National Multimedia Exhibition celebrates the power of the individual to make a difference. The exhibit and workshops feature dramatic stories of some ordinary Americans who took a stand in their own communities. Participants have an opportunity to explore how to help students feel empowered to make choices that make a difference in promoting community and social justice. (Please note that there is a fee of \$25 to participate in this event. Space is limited and all participants must pre-register and use the special event registration form included in this brochure.)

Natural History Museum of Los Angeles (9:30 a.m. to 3:00 p.m.)

Visit the National History Museum and participate in a guided tour of the museum exhibits. See a presentation of tools educators and parents can use to spark children's interest and inspire wonder, discovery and responsibility for our natural and cultural worlds. This museum has one of the world's largest collections of California and western North American mammals; a 70-foot-long skeleton of a fin whale, and fossils as old as 400 million years! (Please note that there is a fee of \$25 to participate in this event. Space is limited and all participants must pre-register and use the special event registration form included in this brochure.)

Pre-conference Institutes (1:00 p.m. to 4:00 p.m.)

Como lograr el máximo potencial académico através de los estándares de escritura

En este instituto interactivo y animado los participantes aprenderán como desarrollar una lección basada en los estándares de lecto-escritura en español. Además, tendrán la oportunidad de crear obras escritas en cuatro diferentes géneros: narrativo, autobiográfico, persuasivo, poesía, y texto expositivo. El saber como usar los estándares le asistirá a ayudar a sus estudiantes bilingües a lograr su máximo potencial académico. Ponentes: Evangelina Cronin, Maria Barillas.

Cooperative Learning for Language Learning-Structures for Success

This institute shares simple cooperative learning structures which can be used as part of any lesson, at any grade level. The structures promote language acquisition by creating more comprehensible input, frequency of output, and a safer classroom context, lowering the affective filter. The cooperative learning structures are easily adapted for all levels of language proficiency. Among the many structures participants will experience and process are CoOp Reading Boards, Fan-N-Pick, Gambit Chips, Find Someone Who, Paraphrase Passport, Mix-N-Match, and Pairs Compare. This institute provides a hands-on experience for educators at all grade levels. Presenters: Spencer Kagan, Julie High.

Parents, Educators and Youth: Essential Partners in Developing Bilingualism and Maintaining Connections to Heritage Language and Culture

Young people reject and lose their home language, and develop shame about their culture unless parents, schools, and communities support them in becoming bilingual and bicultural. This workshop shares a set of tools, videos, parent materials and curriculum that engage parents, teachers and young people in dialogues and learning with and from each other about the meaning of language and culture in their lives, the importance of bilingualism, and what can be done to help young people grow up bilingual and connected to their heritage. Presenter: Laurie Olsen.

Teacher Quality and Effective Academic Language Development of Secondary English Learners

This Institute provides an overview of WestEd's Teacher Quality Initiative which focuses on developing secondary teachers' understanding of effective instruction for secondary English Learners from the beginning levels of English language proficiency to the intermediate levels. Participants will use examples from our multimedia tools and procedures which promote learning of rigorous academic content through culturally and linguistically relevant theory and pedagogy. Presenters: Aida Walqui Van Lier, Magaly Lavadenz

Teaming for Success: Blazing the Path to Academic Success for All Children Through Cultural and Linguistic Relevancy

This workshop provides participants with ideas and materials that assist in building a culturally relevant learning environment. Tools are provided to build a "superhighway" of relevant communication and commitment to work together between the classroom and the home environment. Materials, activities, and handouts are culturally relevant, for multicultural learning, are strengths based, family focused, needs driven, and solution focused. They assist in building a strong relationship between parents and teachers and provide a simple to follow technique to address any, and all issues, affecting the learning environment. Strategies create a win/win environment that builds on the strengths of children, parents, teachers, and everyone in the learning environment.

Handouts will be provided. There will be some interactive activity, group discussion, and a PowerPoint Presentation. Presenters: Gerry Rodriguez, Bradley Norman.

Yes, The Visual and Performing Arts Have Standards Too!

Join us and learn how the Visual and Performing Arts relate to the ELD Standards. See how an example of a Standards-Based arts unit can be integrated into an ELD classroom. Finally, visit teachingarts.org, California's pre K-12 Visual and Performing Arts online resource center to access resources especially collected and catalogued for use in the ELD classroom. Presenters: Karen Coates, Kristine Alexander.

A Collaborative Approach to New Teacher Development: Focusing on English Language Learners with Action Research and Coaching

This interactive session demonstrates a model of professional development that combines mentoring by experienced teachers, action research by new teachers and their advisors, and multi-level collaboration between district personnel, university faculty members, an induction program, and the county office of education. This session will discuss the critical elements of a conceptual framework for fostering knowledge and collaboration developed to help teachers reach the English Language Learners in their grade 4-12 classrooms. In addition, we will explore the role of the program in refocusing teachers' practice on the needs of English Language Learners in their classrooms. Presenters: Judith Scott, Ellen Moir, Rain Bongolan, Stephanie Cope, Guadalupe Rivas, Janet Welch.

Two-Way Bilingual Immersion Programs: An Overview

Two-way bilingual immersion programs are inclusive programs that offer all students the opportunity to acquire language proficiency and literacy in two languages. This institute is designed for participants who are interested in developing or beginning a Two-Way immersion program. Participants will interact with a panel of experienced practitioners as they provide a critical overview of the two-way bilingual immersion programs including definitions, goals, theoretical rational, criteria for success, and basic components for implementation.

Presenters: Marcia Vargas, Rosa Molina

Opening General Session (4:30 p.m. to 6:30 p.m.)

This is the formal grand opening of CABE 2003. Participants have the opportunity to hear a motivational keynote address featuring Chauncey Veatch, National Teacher of the Year, who is a bilingual teacher and shares our commitment to working with diverse background students. Attendees also receive greetings from dignitaries and other special guests invited to officially open the 28th Annual CABE Conference.

Membership Reception and Dance (7:30 p.m. to 11:30 p.m.)

Don't miss out! After the Opening General Session, CABE welcomes all CABE members to join us at the annual Membership Reception Dance in their honor. Meet the CABE Board and Chapter Presidents, network with other members, eat great food and just have fun!

Thursday, February 13, 2003

Full Day Institutes

Historia y cultura: apoyo a la identidad y liderazgo . . . lecciones de los viejos abuelos

El apoyo más contundente para alentar y acrecentar la Identidad y el Liderazgo en nuestros estudiantes y sus padres, se encuentra en el conocimiento de sus más antiguas y sólidas raíces. "Quien conoce su pasado, entiende su presente" y se conoce así, mismo; y podrá diseñar su propio futuro. Venga y penetre con nosotros al fascinante mundo de los "Viejos Abuelos Mesoamericanos", que nos ha sido negado estos últimos 5 siglos. Descubra el potencial que tiene la "memoria histórica" y active el "banco genético" de los estudiantes y participe de esta maravillosa experiencia en el mundo de la educación transformativa, donde la educación y la cultura se fusionan para producir un despertar de la conciencia que impulsará con mayor fuerza y eficiencia el desempeño de los estudiantes. Ponentes: Guillermo Marín, Nancy Jean Smith, Norm Gold, Edgar Lampkin, Barabara Selvidge, Elodia Lampkin, Karla Rice, Lorena Garcia, Gema Godina.

Praxis of the Heart

Relationships are the key to educational change and empowerment. Praxis of the Heart is a process for personal and professional change through dialogic reflection taken from people such as Paolo Freire, bell hooks & Antonia Darder. Transformation occurs when we "do our own work". Discover and rediscover how your educational experiences impact who you are now as a parent, teacher's aid, teacher or administrator and how this, then, impacts you as an educator and how you, then, impact your students. Presenter: Jacqueline Reza.

Programs and Services for English Learners with Special Needs

This institute will provide information and answer questions on both language and disability-related issues in providing

services to English learners in Special Education and on 504 Plans. Major areas will include: assessment and evaluation, authorized teaching personnel, linguistically appropriate goals and objectives, elements of an IEP and 504 plan, best practices in classroom instruction designed for English learners, and an update of state/federal laws for English learners with special needs. Copies of the newly revised #8220; English Learner Guidelines for Students with Special Needs & 8221; will be provided to participants. Presenters: Leroy Hamm, Louis Garcia, Ana Ramirez, Margaret Benavides.

Reaching and Teaching All Students Through SDAIE

Do you need fresh ideas on how to make your curriculum accessible to all of your students? This hands-on, interactive workshop will focus on Specially Designed Academic Instruction in English (SDAIE) strategies that can be used to teach grade level appropriate curriculum to all students. These strategies are used in Project PEAKS, an award-winning program that focuses on using SDAIE to deliver the content area curriculum to English Language Learners. The PEAKS program is currently being replicated in districts in Arizona, California, New Mexico, Utah, and the District of Columbia. Presenters: Kathy Reich, Bonnie Bishop, David Noyes, Christine Lange.

Using Classroom Data to Build Better Readers: User-Friendly Tools for Teachers and Administrators

The skillful use of classroom data is the key to the targeted, systematic, and purposeful instructional decision-making that produces good readers. In this session, participants will work with user-friendly tools and strategies to analyze classroom reading data, and use outcome, demographic, and process data to increase reading achievement. Presenter: Dennis Fox.

longer optional. How can district and school leaders minimize the unintended negative consequences for ELs of high-stakes accountability, and maximize the opportunity to improve instruction in time to make a difference? This institute will provide participants with a systematic approach and concrete tools for setting goals, establishing performance expectations in ELD and academic core subjects, and monitoring progress for continuous improvement. Data from several district case studies will be explored, and district personnel will share lessons learned. Presenter: Robert Linqanti, Senior Research Associate, WestEd

Parental Involvement:**The Heart of Two-Way Immersion Programs**

Parental Involvement is key to success of Two-Way, Dual Immersion Programs. This informative session is designed for administrators, program coordinators and teachers who need ideas on how to enable parents to become Two-Way

(continued page8)

Conference Registration Form

CABE 2003

Extra Savings! Register online by February 8, 2003. Just visit www.bilingualeducation.org

CABE 2003 • 28th Annual Conference • Bilingual Education: A Beacon of Hope, A Voice for Excellence, A Path to Success
February 12-15, 2003 • Los Angeles Convention Center. Registration Postmark Deadline: January 15, 2003

REGISTRANT'S INFORMATION:

Please read the reverse side of this form prior to completing form

First Name MI Last Name
Please check one: ☐ Teacher ☐ Administrator ☐ Parent
☐ Para-Educator ☐ Student ☐ Other

Affiliation (will appear on badge)

Mailing Address (All registration materials will be mailed to this address)

City State Zip

Work Tel No. Home Tel. No.

Email Address

☐ I am a current CABE member. (See #4 in the next column if you would like to join or renew your CABE membership)

☐ YES, I would like interpretation for General Sessions and Keynote Speakers. LANGUAGE: _____

☐ NO, I would not like my name and address given to conference exhibitors on a one time basis for catalogs and materials.

☐ ADA, Yes. (See Item #2 on the reverse side)

CONFERENCE REGISTRATION FEES**1. REGISTRATION:**

Full 4 Day Pass	Pre-Registration		
	Registration Fee	Postmarked by 1/15/03	On-Line Payment
<input type="checkbox"/> (FM)Member	\$365	\$265	\$245
<input type="checkbox"/> (FN)Non-Member	\$465	\$365	\$345
<input type="checkbox"/> (FP)Parents, Para Educators, Students (Member)	\$250	\$130	\$120
<input type="checkbox"/> (FS)Parents, Para Educators, Students (Non-Member)	\$250	\$145	\$135
One Day pass			
Day of Attendance (Mark only one): <input type="checkbox"/> Wed. <input type="checkbox"/> Thurs. <input type="checkbox"/> Fri.			
<input type="checkbox"/> (OM)Member	\$160	\$130	\$125
<input type="checkbox"/> (ON)Non-Member	\$210	\$185	\$180
<input type="checkbox"/> (OP)Parents, Para Educators, Students (Member)	\$100	\$ 70	\$ 65
<input type="checkbox"/> (OS)Parents, Para Educators, Students (Non-Member)	\$115	\$ 85	\$ 80
<input type="checkbox"/> (SA)Saturday only (All categories)	\$ 55	\$ 55	\$ 50
<input type="checkbox"/> (SI)Friday Institute for High School Students Only (box lunch included with registration fee)	\$ 55	\$ 55	\$ 50
<input type="checkbox"/> (CS)Staff Development Day (Please see item # 12 on the reverse side for eligibility requirements for Staff Development Day Pass)			

Total Registration

\$



Please read the reverse side for "Instructions and Information" and return with total payment to:
P.O. Box 51204,
Los Angeles, CA 90051-5504

2. EVENT TICKETS:

Due to limited capacity, meal tickets may not be available on-site.

<input type="checkbox"/> (TFR)	Thurs., 2/13/03	Fundraiser -----	\$ 20
<input type="checkbox"/> (TYL)	Thurs., 2/13/03	Teacher & Para-Educator of the Year Luncheon-----	\$ 40
<input type="checkbox"/> (SPL)	Fri., 2/14/03	Student & Parent of the Year Luncheon -----	\$ 40
<input type="checkbox"/> (SEB)	Fri., 2/14/03	Seal of Excellence Banquet ----	\$ 60
<input type="checkbox"/> (AYL)	Sat., 2/15/03	Administrator of the Year Brunch -----	\$ 30

☐ I am a Superintendent or School Board Member and will be attending the "Superintendents and School Board Members Symposium" on Friday, February 14, 2003.

☐ YES, I would like vegetarian meals.

Total Event

\$

3. SCHOOL SITE VISITS

☐ Wed., 2/12/03 - School Site Visit ----- \$ 30
Indicate program of preference (See detailed program descriptions on page 13 for description and #)

1st Choice: _____

2nd Choice: _____

Total School Site

\$

4. CABE MEMBERSHIP

To take advantage of discounted registration fees, make sure your CABE membership status is current as of February 2003.

<input type="checkbox"/> New <input type="checkbox"/> Renewal	
<input type="checkbox"/> Administrator -----	\$ 75
<input type="checkbox"/> Teacher -----	\$ 55
<input type="checkbox"/> Para Educator -----	\$ 30
<input type="checkbox"/> Parent/Community (Not employed by a school district) -----	\$ 15
<input type="checkbox"/> Student (Currently enrolled in an undergraduate program) -----	\$ 15

Total for Membership

\$

GRAND TOTAL

\$

5. PAYMENT METHOD

Check Number (Please make all checks payable to CABE)

P.O. No.

School District

MasterCard/Visa/AMEX No.

Exp. Date

Signature

Date

Postmark deadline : January 15, 2003

For registration information, please contact:
1-866-814-CABE
Customerservice@bilingualeducation.org

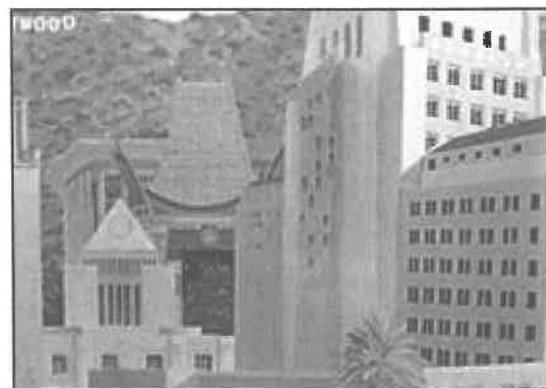
Take advantage of the online discount and avoid on-site new registration lines. When you submit your CABE 2003 registration(s) either on-line or by mail, your registration is processed in advance. All registration materials (conference badge, conference activity tickets, and school site visit assignments, etc.) will be mailed to the address you provide on the registration form. Conference badges will be sent out between January 15 and January 31, 2003. If you register after January 15, 2003, badges will be available for pick-up on-site at the registration booth(s) located in the West Hall, Concourse Foyer, at the Los Angeles Convention Center.



The Museum of Tolerance is a high tech, hands-on experiential museum that focuses on two central themes through unique interactive exhibits: the dynamics of racism and prejudice in America and the history of the Holocaust - the ultimate example of man's inhumanity to man. The Museum, the educational arm of the Simon Wiesenthal Center, was founded to challenge visitors to confront bigotry and racism, and to understand the Holocaust in both historic and contemporary contexts.

The Los Angeles Public Library strives to inform, enrich, and empower every individual in its community by creating and promoting free and easy access to a vast array of ideas and information and by supporting lifelong learning in a welcoming environment.

At the heart of the Library is a growing collection of books and other informational materials developed over 120 years -- both current and retrospective -- and a staff dedicated to assisting library users. In addition to serving its own community with a Central Library, more than 60 branch libraries, and several bookmobiles, the Los Angeles Public Library is a major resources for individuals, libraries, and other organizations throughout the United States.



The Natural History Museum of Los Angeles County is a crown jewel of Los Angeles' museums. A national leader in exhibitions, education and research, the Museum is L.A.'s second oldest cultural institution, opening its doors in 1913. It is the largest natural and historical museum in the Western United States, safe guarding more than 33 million spectacular, diverse specimens and artifacts.

1. REGISTRATION FORM

Use a separate "Registration Form" for each registrant. If more forms are needed, please make photocopies (front & back) or order additional copies from CABE. You may also download the forms at www.bilingualeducation.org. **Only parents not employed by any school district may register as a "Parent". The "Student" rate only applies to students enrolled in an undergraduate degree program.** CABE may ask for proof if necessary. Retain a copy of both sides for your records.

2. AMERICANS WITH DISABILITIES ACT

Under Provisions of Title I of the Americans with Disabilities Act, please check if you require any special arrangements. You will be contacted at the address you list to make specific arrangements/and or accommodations.

3. REGISTRATION PROCESSING

Please type or print clearly the information requested. Information from this form will be used to print conference badges. Additionally, due to delays that can occur in school district mail delivery systems, use an address which provides the most expeditious means to mail your confirmation and conference materials. Send your payment and form(s) to CABE 2003 Registration, P.O. Box 51204, Los Angeles, CA 90051-5504. You will be mailed registration status information prior to January 31, 2003.

4. POSTMARK DEADLINE

Pre-Registration Postmark Deadline is January 15, 2003. On-line Registration deadline is February 8, 2003. In order to allow time to process all applications and mail conference badges to all pre-registrants prior to January 15, 2003, **the postmark deadline will be strictly adhered to.** Due to limited capacity of the Convention Center, on-site registration will be limited. We encourage you to pre-register to avoid waiting in line and additional costs.

5. PAYMENT REQUIREMENTS

Registration will not be processed unless it is accompanied with payment in full. **Make checks payable to CABE.** Purchase orders should be used only when absolutely necessary and they require payment within 30 days. MasterCard, Visa and American Express will be accepted as long as the complete number, expiration date and signature are included on the front of this form. Purchase orders and institutional checks for more than one person must be accompanied by a separate registration form for each individual and the purchase order must list each attendee's name. Requisition forms are not an acceptable form of payment and will not be processed. **A \$50 charge will be assessed for all returned checks.**

6. REQUESTS FOR CANCELATION REFUNDS

All requests for refunds must be made in writing and submitted to CABE Headquarters prior to January 15, 2003. Refunds will be processed and mailed out following the conference. A 20% processing fee will be assessed on all requests. **There will be no refunds or exchanges for meal or event tickets. Refund requests postmarked after January 15, 2003, will not be honored.**

7. REPLACEMENT OF BADGES AND TICKETS

Requests for replacement of badges and event tickets will be charged at the original full registration price. There is no refund for replacement badges and tickets. **NO EXCEPTIONS.**

8. SUBSTITUTIONS

Names will be substituted on registration forms only upon receipt of a written request. If a Registration Badge has been received, it must be returned with the request. **No substitutions will be accepted after January 15, 2003.**

9. MEMBERSHIP VERIFICATION

Please note: In order to receive a membership discount, each conference participant submitting member level fees must be a member in good standing as of February, 2003. If it is determined that membership is not current, conference attendee will be invoiced for either membership dues owed or the balance of the non-member rate for the conference.

10. ONE-DAY PASSES

For individuals unable to attend for more than one day, you may purchase a One-Day Pass. Please indicate which day you will be attending. If the day is not indicated, we will assume that you will be attending Thursday, February 13, 2003, and will process as such. This pass can only be used for the designated date.

11. COMPLIMENTARY PASSES

If you are entitled to complimentary registration (Presenters, Planning Committee, Exhibitors, Career Fair) **DO NOT COMPLETE THIS FORM.** Please contact the CABE Office via email at info@bilingualeducation.org and request a "Form for Complimentary Registration". If you are an exhibitor entitled to complimentary registration please refer to your Exhibitor Registration form.

12. STAFF DEVELOPMENT DAY INCENTIVE

For those school districts designating CABE 2003 as "Staff Development Day(s)", a registration incentive of one free registration (excluding meals) is available to groups submitting 25 "like" registrations. Like registrations refer to either full four-day passes or one-day passes, not which category they fall into (member, non-member or parent). All 25 registrations must be submitted on the same Purchase Order. To take advantage of this opportunity, please submit a registration form with the staff member's name who will use the pass, and mark the appropriate box on the registration form.

13. SCHOOL SITE VISITS

Buses for School Site Visits will depart from Los Angeles Convention Center at 8:00 a.m. on Wednesday, February 12, 2003, and return by 2:00 p.m. Confirmation letters and additional information will be sent. Spaces are limited and will be filled in the order received. Passes will not be available on-site and are not refundable. Please review the list of programs on page 13. Choose two (2) programs, which you would like to visit and list their number on the Registration Form as a first choice and second choice.

Pre-Conference Activities

Registration Form

Pre-Conference Extended Learning Opportunities

CABE 2003 is providing Extended Learning Opportunities for conference participants to visit some of LA's most interesting attractions. The day trips will all take place on Wednesday, February 12, 2003 (See descriptions on page 5)

All participants will be picked-up in the morning and returned to the LA Convention Center by 3:00 p.m., which provides enough time to attend the General Opening Session at 4:30 p.m. Space is limited and we request that you send us your completed registration form and check/money order for the events you are interested in by **December 31, 2002. Please note there will not be any refunds for cancellations.** No exceptions! These activities are open to everyone and you do not have to be a conference participant to take part in these activities.

Number of Tickets	Event	Price / Ticket	Total
	Museum of Tolerance	\$25.00	
	Natural History Museum	\$25.00	
	Los Angeles Central Library Tour	\$25.00	
Total			\$

First Name		Last Name	
Street Address			
City		State	Zip
Home Tel		Work Tel	
Email			

Please Note:
Tickets for these events are not included with your registration materials, they will be mailed out separately. Include your check or money order with this registration form.



Please send completed registration form and total payment to:
CABE 2003, Pre-Conference Extended Learning Opportunities
16033 E. San Bernadino Road, Covina, CA 91722-3900
For registration information, please contact:
Tel: 626-814-4441 Fax: 626-814-4640 Email: info@bilingualeducation.org

Housing Information CABE 2003

CABE 2003
February 12 - 15, 2003 • L.A. Convention Center • Los Angeles, CA

The California Association for Bilingual Education is pleased to provide CABE 2003 attendees with this information to assist with housing for the February 12-15, 2003, conference. The following hotels were carefully selected to meet the diverse needs of our conference participants and to simplify your search. Most hotels offer conference rates 3 days before and 3 days after conference based on availability.

	Single	Double	Triple/Quad	Additional
✳️ Holiday Inn Los Angeles City Center 1020 South Figueroa Street, LA, CA 90015 Tel. No.: 213-748-1291	\$139.00	\$139.00	\$139.00	n/a
✳️ Hotel Figueroa 939 South Figueroa, LA, CA 90015 Tel. No.: 800-421-9092 or 213-627-8971	\$118.00	\$118.00	n/a	\$15.00
❖✳️ Hyatt Regency Los Angeles 711 South Hope Street, LA, CA 90017 Tel. No.: 213- 683-1234	\$140.00	\$140.00		\$25.00
❖ Los Angeles Marriott Downtown 333 South Figueroa Street, LA, CA 90071 Tel. No.: 800-228-9290	\$144.00	\$144.00		
❖✳️ Millennium Biltmore Hotel 506 South Grand Avenue, LA, CA 90071 Tel. No.: 213-624-1011 or 866-866-8088 213-612-1575 or 800-245-8673	\$149.00	\$149.00	n/a	\$20.00
❖✳️ Wilshire Grand Los Angeles 930 Wilshire Boulevard, LA, CA 90017 Tel. No.: 213-688-7777 or 888-773-2888	\$139.00	\$139.00	n/a	\$20.00
❖ Wyndham Checkers Hotel Los Angeles 535 S. Grand Avenue, LA, CA 90071 Tel. No.: 213-624-0000 or 1-800-WYNDHAM	\$139.00	\$139.00		

Confirm purchase order/Master account acceptance policy with hotel.
✳️ Within walking distance ❖ Not within walking distance ✳️ Union Hotel

Accommodations:
Guestroom reservations at the "official hotels" are handled on a first-come, first-served basis. For reservations made on or before December 30, 2002, conference participants can take advantage of special rates at the listed hotels for a limited number of rooms. Please review the following information and make your hotel selection. Contact hotels directly for reservations.

Complimentary ground transportation provided between hotels and Convention Center. All conference sessions and events will be held at the Los Angeles Convention Center.

Reservations must be made directly with the hotel of your choice. Please mention your participation in the CABE 2003 Conference when making your reservation in order to receive conference rates.
Guaranteed Reservations Only:
Hotels require a deposit by credit card at the time reservations are made.
Deadlines:
We recommend reservations be made by **December 30, 2002**; however, most hotels will continue to accept reservations subject to availability.
Changes & Cancellations:
Confirm policy with hotel.

For your /personal use when making reservation
(Do not submit with registration)

Hotel _____

Spoke with _____ Date _____

Confirmation No. _____

Please keep information for use when checking in to your hotel

Date In _____ Date out _____

Room Type _____

Note _____

CABE 2003 Map and Direction

Los Angeles Convention Center

1201 South Figueroa Street Los Angeles, California 90015
Phone: (213) 741-1151 FAX: (213) 765-4266

February 12-15, 2003

- ① Holiday Inn Los Angeles City Center
- ② Hotel Figueroa
- ③ Hyatt Regency Los Angeles
- ④ Los Angeles Marriott Downtown
- ⑤ Millennium Biltmore Hotel
- ⑥ Wilshire Grand Los Angeles
- ⑦ Wyndham Checkers Hotel Los Angeles
- M Metro Red Line
- M Metro Blue Line

Directions:

The Los Angeles Convention Center is conveniently located at the intersection of the Santa Monica and Harbor Freeways.

To reach the Cherry Street Entrance, convenient to West Hall, Petree Hall, Concourse Hall, and the 400 and 500 series meeting rooms:

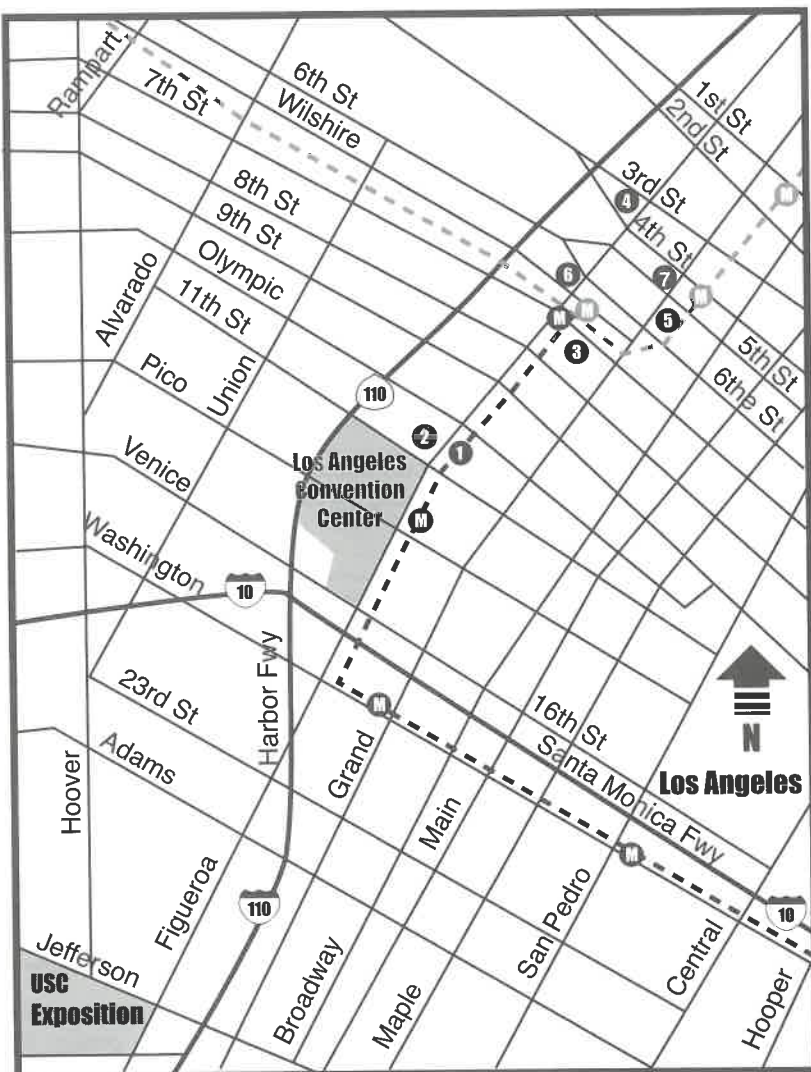
Northbound: Harbor Freeway (110) to the Santa Monica Freeway (10) West exit. After entering the exit lane, follow Pico Blvd. exit. Cross Pico Blvd. going North on Cherry Street. The entrance to the parking lot is located on your right-hand side at the intersection of Cherry Street and 12th Street.

Southbound: Harbor Freeway (110) to Olympic Blvd. Turn left at bottom of off-ramp, on Blaine, and left again on 11th Street. Turn right on Cherry Street. The parking lot entrance is located on your left-hand side at the intersection of Cherry Street and 12th Street.

Westbound: Santa Monica Freeway (10) to the Harbor Freeway (110) North exit Downtown. Follow signs to the Convention Center. Exit Pico Blvd. Cross Pico Blvd. going North on Cherry Street. The entrance to the parking lot is located on your right-hand side at the intersection of Cherry Street and 12th Street.

Eastbound: Santa Monica Freeway (10) to the Harbor Freeway (110) North. Exit at 9th Street. Drive two blocks and turn right on Flower Street. Continue on Flower until you reach Pico Blvd. Turn right on Pico Blvd. Continue on Pico until you reach Cherry Street. Make a right on Cherry Street. The entrance to the parking lot is located at the intersection of Cherry Street and 12th Street.

To reach the Venice/Convention Center Drive Parking Entrance, convenient to South Hall, and the 300 and 400 series meeting rooms:



Northbound: Harbor Freeway (110) to the Santa Monica Freeway (10) West exit. After entering the exit lane, follow Pico Blvd. exit. Turn right on Pico Blvd. Turn right on Convention Center Drive and enter parking from the Convention Center Drive entrance.

Southbound: Harbor Freeway (110) to Olympic Blvd. Turn left at bottom of off-ramp, on Blaine, and left again on 11th Street, right on Figueroa, right on Venice, right on Convention Center Drive and enter parking from the Convention Center Drive entrance.

Westbound: Santa Monica Freeway (10) to the Harbor Freeway (110) North exit, Downtown. Follow signs to the Convention Center. Exit Pico Blvd. Right on Pico Blvd. Turn right on Convention Center Drive and enter parking from the Convention Center Drive entrance.

Eastbound: Santa Monica Freeway (10) to the Harbor Freeway (110) North. Exit 9th Street. Drive two blocks and turn right on Flower Street. Right on Venice Blvd., and right into Convention Center Drive entrance.

Institutes

advocates and active partners in education by developing a structured parent-ed component. Let us help you bring it all together. Presenters: Isabel Soliz, Frank Ohnesorgen.

The Development, Implementation, and Sustainability of Professional Collaboration For Special Education: A Sociocultural Perspective

The purpose of this inquiry was to investigate the development, implementation, and sustainability of collaborative educational practices among special educators, general educators, and members of a university community. The ultimate outcome goals of the study were to determine: (a) how collaboration functioned during the time of initial intensive support, (b) how collaboration was

sustained after initial intensive supports were removed and (c) ways in which the ZPD informed and sustained collaboration throughout the study. Findings for the study indicate that although collaboration was sustained, partnerships among the participants strengthened and sustained collaboration, especially those linking the university to the classroom. These findings have implications for integrating sociocultural theory into future research studies that involve special and general educators and learners in culturally and linguistically diverse learning environments. Presenters: Lorri Michelle Santamaria, Todd Fletcher.

Thursday, February 13, 2003

1/2 Day Institutes (Afternoon)

Proviendo Rigor y Riqueza en la enseñanza de la lecto-escritura en español: la aplicación de los estándares

Este instituto propone dos cosas 1) ayudar a que los profesores bilingües elaboren estrategias y actividades que promuevan un nivel alto en rigor durante la enseñanza de la lecto-escritura en español, informados por los Estándares, y 2) ampliar las conexiones entre la herencia, el lenguaje y la cultura hispanica.

Ponentes: Magaly Lavadenz, Silvia Dorta-Duque De Reyes.

Recruiting and Retaining Culturally Diverse Students in Gifted Programs

This institute will address the urgent need for educators to increase the representation of diverse students in gifted programs. Barriers and recommendations for identification will be discussed as well as instruments and promising practices and other resources. Presenter: Donna Ford, Professor of Special Education/Gifted Education, Ohio State University

Teaching, Assessing, Grading, and Monitoring Progress of Priority Standards

The author of the map of ELD - ELA Standards explains its use in a system targeting the most important standards - from teaching and assessing to grading and monitoring progress. This is the system he advocates for his own two English learners. Also an ELL specialist will discuss how her district used the Map to develop standards-based ELD

lessons and show many samples. Discuss and take home ideas, tools, samples, and processes. Presenter: John Carr.

Using Retell as a Tool for the Teaching and Learning of English Learners

How can teachers determine what English learners know and are able to do? Through interaction with student samples derived from an assessment protocol administered in K-5 dual immersion, alternative, and structured English immersion classrooms. Participants in this workshop will investigate the use of retell as a viable alternative for the second language and literacy assessment of English learners. Presenters: Dolores Beltran, Elvira Armas, Meredith Adams, Gisela O'Brien.

What's Love Got to Do with It?

This institute will pose dialogic questions regarding love in the academe via quotes taken from the literature of critical pedagogists such as Paolo Freire, bell hooks, Parker Palmer as well as others. The dialogue will focus on the place of love in school environments and the role of the parent, teacher's aide, teacher and administrator in promoting a meaningful, culturally sensitive education for all children via the larger construct of love. Through dialogue and the reclamation of our own voices, in relation to love in our classrooms and the institutions within which we work, we can foster the development of a better sense of community and connectedness thus fostering love and the learning process. Presenters: Jacqueline Reza, Margie Berta Avila, Kimberly Persiani.

Friday, February 14, 2003

Full Day Institutes

A Standards-Based Approach to Teaching Traditional Mexican Dance in the Classroom

This interactive institute will demonstrate that Mexican traditional dance can be brought into mainstream curriculum for English Learners. The presenters will review the adopted Performing Arts Framework and Standards as they apply to traditional Mexican dance. They will also present strategies that weave language arts, math, and history into standards-based dance instruction. Participants will learn a traditional dance from a region of Mexico, including choreography and interactive content. And participants will

be provided with the music for the dance they learn and strategies for teaching the dance in the classroom. Presenters: Eve M Delfin, Martha O. Acevedo.

Extended Learning Programs for English Learners

This institute will focus on the extended learning opportunities for English Learners and their parents. Some of the topics will be: Hmong K-8 Extended Summer School, Russian Extended Summer School, Roosevelt International Academy Summer School, English Language and Intensive

Institutes

Literacy Program, After School Intensive Tutoring Program, Saturday School, and other after school programs for parents. Participants will gain knowledge of effective programs and strategies that enable English Learners to excel in school. Presenters: William Vang, Chimeng Yang, Doua Vue, Jean Moua.

Students as Agents of Change (A Critical Dialogue)

This institute for high school students will introduce critical theory through the use of Paulo Freire's transformative educational practices. The presenters, teachers, and students will share ways in which participants can use voice, dialogue, reflection, and action to become social agents for change in their schools and communities. High school & university students will present the harsh cultural, political, economic and social realities. This institute is open only to high school students. Presenters: Guillermo Terrazas, Emelina Coronado, Nick Crisosto, Rosalba Jasso.

Voices of Success: Narratives of College Bound Latinas, Madres voluntarias and critical educators

As educators we know that it takes a great commitment on the part of schools to effectively meet the needs of immigrant students and their families. Schools that are successful at

teaching immigrant children provide learning environments that build on their assets (culture, language, and funds of knowledge). In this institute four presenters from Claremont Graduate University share three research studies which explore factors that contribute to the success of immigrant students in public schools! Each study focuses on different members of the school, community, parents, teachers, and students. Presenters will provide specific recommendations on ways to improve schools for immigrant students. Presenters: Alejandra Favela, Sara Exposito, Mariana Robles-Delany, Anita Quintanar.

We are Authors . . . in the moment, from our hearts and with joyful music!

We all have stories to tell, and lessons to leave for others! Come and enjoy the fun of reading and writing our thoughts and our hearts! We will spend the day in music and delighting in the writing process. Presenters will share successful transformative writing projects, and engage participants in the making of books! Presenters: Alma Flor Ada, Isabel Campoy, Peter Baird, Rosa Hernandez, Dick Keis, Duarte Silva, Nancy Jean Smith, Barbara Selvidge

Friday, February 14, 2003

1/2 Day Institutes (Morning)

Circulo de Lectura - A Leveled Reading Program

At Cesar Chavez Elementary in Davis the teachers and parents have worked together to create a very successful and satisfying reading program for readers beginning in Kindergarten and going through 4th grade. This program provides each child with books that are appropriate for the level of reading of the child. Our "Circulo de Lectura" library is made up of mostly Spanish books that have been collected over the years. Presenters: Eileen W. Tutt, Timothy N. Tutt.

Closing the Achievement Gap: Understanding Poverty

The session will focus on the disparity in achievement among students from different socioeconomic classes. The session will provide specific strategies & instructional practices that will work to the advantage of children living in poverty. Presenters: Brooke Harms, Martha Hall, Magdalena Ruz González.

Differentiated Instruction for the English Language Learner

This institute will provide participants with a brief overview of the ELD standards followed by an in-depth discussion of

the application of differentiated instruction in classrooms that include ELL students. Specific classroom units modeling differentiated instruction will be presented. The units will model the application of both the ELA standards and the ELD standards. An interactive activity will follow. Presenter: Adel Nadeau.

Planning and Master Plans for EL Programs

Careful planning can lead to greater consistency in schools and classrooms. It can result in much greater effectiveness in the English learner programs we offer to students and their families. This institute provides a framework for planning complex educational projects, and describes how several districts have developed comprehensive EL Master Plans. The session concentrates on the content of these plans and also on how the process of master plan development can serve as a major professional development opportunity. Participants are encouraged to bring their own plans, and will have the opportunity to work on improvements to their district's plans and procedures. Presenters: Norm Gold, Karen Kendall.

fuerte la participación de padres en su escuela y en su comunidad. Este instituto es para padres o equipos de padres y maestros. Ponentes: Jan Gustafson, Alicia Uribe Alvarez, Erin Bostick Mason.

Friday, February 14, 2003

1/2 Day Institutes (Afternoon)

Como usar la tecnología para organizar su grupo de padres

Vengan a ver como usar la tecnología para organizar un grupo de padres en su escuela. En este instituto para padres de familia, aprenderán como hacer más volantes, folletos y presentaciones de Powerpoint para hacer más

Institutes

Do the Write Thing! Learn How 70 School Districts in California are Improving the Literacy of English Learners

Participants will learn how this writing model is training Lead Trainers throughout California and in several other states to conduct local staff development on standards-based writing instruction and assessment. WRITE strategies are linked to both ELA and ELD standards and to state assessments such as the SAT-9, the HSEE and the CELDT. Presenters: Donna Heath, Laurie Nesralla, Silvia Dorta-Duque De Reyes.

Effective Practices for Standard English Language Learners: Un-Silencing the Dialogue

The learning lens of standard English learners (SELS) often goes overlooked in many classrooms. Educators tend to view the culture and non-standard language of these students from a deficit perspective, negating their home language, its richness and their cultural capital. Through

demonstration and discussion, participants will be provided a brief overview of the research- a theoretical rationale for serving SELS and a myriad of effective instructional strategies. Presenters: Hollie Sharrocky, Noma LeMoine, Carlos Barron, Aminika Redeaux.

Mary and Judy's Top Ten Teacher Tricks 2003

Mary and Judy's Top Ten 2003 is a fast-paced, innovative, energetic workshop offering new and creative ideas for teaching and motivating students, teachers, and teacher leaders. Each participant will receive a multitude of motivational ideas, team builders and strategies to increase school-wide teaching and learning. New and experienced teachers in all subject areas will benefit from this unique presentation. You will have fun while being motivated to help make a difference at your school. Presenters: Judy Conner, Mary E. Donovan.

Saturday, February 15, 2003

1/2 Day Institutes (Morning)

Having Fun While Making Sense of Algebraic Concepts

Come learn ways to make the Algebra and functions standards accessible to your students through the use of SDAIE strategies. You will participate in hands-on activities and progress through the development of these standards through meaningful experiences. Explore the connections between the manipulatives, T-chart, graphs, and equations. This is a hands on institute for 3-8 grade teachers. Presenters: Annette Kitagawa, Karen K. Sharkey.

Heritage Languages:

Rebuilding the Broken Connection Through K-12 & University Collaborations

The presenter in this institute will introduce panelists and provide background on the National Heritage Language Initiative which commenced in Long Beach in 1999 and has been continued through the efforts of the Center for Applied Linguistics (CAL) and the National Foreign Language Center (NFLC). Panelists will elaborate on efforts to expand HL instruction in the UC system and will show a video. Also they will address ways in which universities can promote Spanish for Native Speakers and make connections between the CSU and K-12 institutions. They will discuss efforts to promote Korean in the LAUSD and opportunities for connection with the Korean community and the UC. One of the panelists will discuss his experiences as a Cambodian bilingual teacher and subsequent researcher

and policy analysis on how best to promote Khmer as an HL. Presenters: Terrence Wiley, Olga Kagan, Maria Carreira, Masako Douglas, Craig Merrill, Wayne Wright.

Oral Language Development - Opening the Door to Language Acquisition

Open the door for your students to accelerate language acquisition and enhance their learning of academic content. This interactive, hands-on workshop will provide you with tools that enable your students to access language through engaging collaborative activities. These tools facilitate authentic opportunities for communication in the classroom. The strategies you will learn in this institute are designed to meet state content standards while differentiating instruction in listening, speaking, reading, and writing. Presenters: Bonnie Bishop, Bruce Bishop.

Supporting English Learners Through Strategic Planning: From Vision to Classroom

Montebello Unified School District's Superintendent, Coordinator of Bilingual Crosscultural Education, and School Principal present their organizational direction in District Goals and strategic planning, and how this process is focused on creating better programs for English Learners. Experiences will be shared on how EL students are being supported in meeting high standards and expectations for all students, within the structure of Proposition 227. Presenters: M. Magdalena Carrillo Mejia, Rick Mendez, JoAnne Slater.



Hotel Reservations

All hotels listed on the CABE 2003 Housing Form offer conference rates. Some hotels are conveniently located within walking distance of conference activities. Complimentary ground transportation is available for hotels that are not within walking distance.

Conference participants can make CABE 2003 housing reservations directly with the hotel. Refer to the enclosed housing form for rates and deadlines. Make your reservations in a timely manner to secure conference rates at the hotel of your choice.

Air Travel

In cooperation with the California Association for Bilingual Education, United Airlines and Southwest Airlines are offering discounted fares to CABE 2003 attendees. You may make arrangements through your travel agent or by calling the airline directly. Please note that the use of Ticketless Travel may eliminate the discounts that are available for CABE 2003 travel. To obtain the best available rate, please utilize the Ticket-By-Mail option when you purchase airline tickets from Southwest.

Southwest Airlines offers a 10% discount off most fares for air travel to and from the event.

Call Southwest Airlines Group and Meetings Reservations at 1-800-433-5368 and reference the assigned I.D. Code -J7321. Reservations Sales Agents are available 7:00 a.m. - 8:00 p.m. Monday-Friday, or 8:30 a.m. - 5:30 p.m. Saturday and Sunday, Central Standard Time. Make reservations five or more days before you want to travel to take advantage of this offer.

United Airlines is offering special meeting fares for all attendees of CABE who use the Special Meeting Desk to book their reservations. Book early and take advantage of the promotional fares that give you the greatest savings! Earn a 5% discount off the lowest applicable fare, including First Class, or 10% off the mid-week coach fare. United is also offering an additional 5% off tickets purchased at least 60 days in advance. Simply call (or have your travel agent call) 1-800-521-4041 and refer to Meeting ID Number 509CS. Mileage Plus members receive full credit for all miles flown when attending this meeting. Tickets can be mailed by United,

picked up at your local travel agency or United Airlines ticket office. You or your travel agent should call today as seats may be limited.

Avis & Alamo Rental car companies will offer CABE 2003 attendees a 10% discount off of the applicable rental rates when reservations are made in conjunction with United Airlines air reservations.

Auto Travel and Parking

See enclosed map for details on directions to the conference. Parking is available for the daily fee of \$10 at the Los Angeles Convention Center. In and out daily passes are available for \$17. The Los Angeles Convention Center parking structure opens daily at 5:30 a.m. CABE 2003 attendees can also take advantage of the **Metro Rail system**, with stops conveniently located near the Los Angeles Convention Center (LACC) and which serves as an easily accessible source of transportation between LACC and the various sites and activities of Los Angeles and surrounding cities. For advance planning visit their website at www.mta.net.

After Conference/Weekend Activities

If you and your family would like to stay in Los Angeles for the weekend, check for availability of the special conference hotel rates with your hotel. The following is a partial list of after conference/weekend activities available in the Los Angeles area:

Shopping

- | | | |
|--------------------------------|------------------------------|------------------------|
| * Los Angeles Garment District | * Los Angeles Jewelry Mart | * Olvera Street |
| * Los Angeles Flower Mart | * 7th & Figueroa Marketplace | * 3rd Street Promenade |

Museums

- | | | |
|-------------------------------------|--------------------------------|------------------------------------|
| * Museum of Contemporary Art | * El Pueblo de Los Angeles | * Natural History Museum |
| * Japanese American National Museum | * The J. Paul Getty Museum | * Los Angeles County Museum of Art |
| * Los Angeles Children's Museum | * California Science Center | * California Afro-American Museum |
| * Museum of Tolerance | * Museum of Latin American Art | * Norton Simon Museum |

Family Fun

- | | |
|------------------------------------|------------------------------------------|
| * Disneyland | * Universal Studios Hollywood & CityWalk |
| * Knott's Berry Farm | |
| * Santa Monica Pier's Pacific Park | |
| * Long Beach Aquarium | |

Special Attractions

- | | | | |
|------------------------------------|--------------------------------|-----------------|-------------------|
| * STAPLES Center | * Little Tokyo | * China Town | * Thai Town |
| * Los Angeles Grand Central Market | * Los Angeles Public Library | * Angels Flight | * Los Angeles Zoo |
| * Huntington Library | * Los Angeles County Arboretum | * Music Center | |
| * Ahmanson Theatre | * Mark Taper Forum | | |

Take advantage of the online discount and avoid on-site new registration lines. When you submit your CABE 2003 registration(s) either on-line or by mail, your registration is processed in advance. All registration materials (conference badge, conference activity tickets, and school site visit assignments, etc.) will be mailed to the address you provide on the registration form.

Conference badges will be sent out between January 15 and January 31, 2003. If you register after January 15, 2003, badges will be available for pick-up on-site at the registration booth(s) located in the West Hall, Concourse Foyer, at the Los Angeles Convention Center.

Save \$\$
Pre-Register by mail. Must be
postmarked by
January 15, 2003!

Important- Please Note:

- Name badges must be worn for admittance to all conference events, workshops, and exhibits.
- If badge is lost, or forgotten, please be advised that requests for replacement badges prior to or during the conference will be charged the full price paid when registration was first submitted. There will be NO EXCEPTIONS to this policy.

School site visit reservations must be made at the time of registration. Please read your registration form thoroughly, as certain restrictions and penalties do apply. Please select and indicate #1 and #2 choice. Page 13 provides program descriptions and number assigned to each program type.

Mailing Instructions for Conference Registration

Please fill out the enclosed registration form completely and enclose payment.

Pre-registration must be postmarked **no later than January 15, 2003**. Mail registration to:

CABE 2003 Registration
P.O. Box 51204
Los Angeles, California 90051-5504

Please Note: If you do not mail the registration form to the address above, it cannot be processed. Registration inquiries may be made to CABE at 1 (866) 814-CABE (2223), or via e-mail at customerservice@bilingualeducation.org.

Staff Development Day(s) For those school districts designating CABE 2003 as "Staff Development Day(s)," a registration incentive of one free registration (excluding meals) is available to groups submitting 25 registrations. These registrations must all be the same (either a full four-day pass or a one-day pass) regardless of the category: member, non-member, or parent. All 25 registrations must be submitted on the same purchase order. For further information see the "Instructions and Information" form located in this brochure.

Save \$120
Using On-line Registration

For your Convenience: On-line Conference Registration

Registration on-line—now available at www.bilingualeducation.org

- Save time and money! Participants who register on-line can save up to \$120 when compared to the on-site price. Please note that the on-line registration deadline is February 8, 2003.
- **Join CABE Today!** Save on conference fees when you become a member. You can also renew your membership on-line or use the on-line registration process to check your membership status.
- It's fast and user friendly! Your registration is processed via a secure server. Our secure site accepts Visa, MasterCard, American Express, and School District/Organization Purchase Orders.

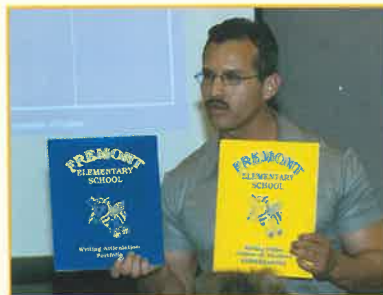
The following programs will be available for School Site Visits. Please make your selection and enter your choice on the conference registration form. (e.g. Elementary dual Immersion -4a)

1. General Programs/ Services for Second Language Learners

Language Assessment Center (Elementary Level) : Assessment Centers are locations specifically created for identification of and placement services for English language learners. The assessment information is provided to schools ensuring English Learners placement into instructional programs that meet their linguistic/instructional needs.

2. Family Literacy (K-12)

Family Literacy Programs are intergenerational literacy programs that involve parents and their children. Programs focus is on literacy strategies parents and other adults can use at home to develop and maintain the home language.



3. Newcomer Program, Elementary Level

This program is for newly arrived English learner immigrant students. Students attend this program to learn "survival" English. These programs are meant to be temporary placements until students learn enough English to be placed into other linguistically appropriate school programs.

4. Elementary Programs

a. Two-Way Bilingual/Dual Immersion: These programs have a strong, comprehensive instructional design that includes English Language Development, primary language instruction and SDAI (specially designed academic instruction in English/other non-English language). There are two language groups represented in the Two-Way classroom. English Learners and English proficient students who serve as language models for each other during the instructional day. The goal of this program is high levels of biliteracy in two languages.

b. Heritage Language Programs

These programs are intended for students who are learning English and for students with cultural ties or heritage in the target language and who now only speak English. Programs can be set up during school (maintenance bilingual program), after school and on Saturday. The goal of these programs is to recapture the target language skills of participating students.

c. Elementary Transitional Bilingual Programs (TBE):

The purpose of these programs is to use the native language of English Learners as a bridge while they transfer into total English instruction. Instruction in TBE programs develops and enriches the students' native language as they learn English, so students can access the total curriculum.

5. Middle School Programs

- a. Two-Way Bilingual/Dual
- b. Heritage Language Programs
- c. Transitional Bilingual Programs (TBE)
- d. Other- e.g., ELD and SDAIE

6. High School Programs

- a. Two-Way Bilingual/Dual
- b. Heritage Language Programs
- c. Transitional Bilingual Programs (TBE)
- d. Other- e.g., ELD and SDAIE

We acknowledge and thank our partial list of co-sponsors for their continuous support.

County Offices of Education

Kern Superintendent of Schools
Orange County Department of Education
Riverside County Office of Education
San Diego County Office of Education
San Joaquin County Office of Education

Los Angeles County Office of Education
San Bernadino County Superintendent of Schools
San Mateo County Office of Education
Santa Clara County Office of Education
Ventura County Superintendent of Schools Office
Educational Services Center

School Districts

ABC Unified School District
Alhambra School District
Apple Valley Unified School District
Azusa Unified School District
Burbank Unified School District
Chualar Union School District
East Side Union High School District
El Monte City School District
El Monte Union High School District
Escondido Union School District
Fountain Valley School District
Glendale Unified School District
Long Beach Unified School District
Los Angeles Unified School District
Montebello Unified School District
National School District

Ocean View School District
Oxnard School District
Pittsburg Unified School District
Pomona Unified School District
Rialto Unified School District
Rio School District
Salinas Union High School District
San Dieguito Union High School District
San Rafael City Schools
San Ysidro School District
Sequoia Union High School District
South Bay School District
Sweetwater Union High School
Valle Lindo School District
West Fresno School District

University and Organizational Co-Sponsors

Barahona Center for the Study of Books in Spanish for Children and Adolescents
California Latino School Board Members Association
Cal Poly Pomona, BCLAD Program/Teacher Education Department
Center for Language Minority Education and Research (CLMER)
Southern California Comprehensive Assistance Center
WestEd's Equity Assistance Center



California Association for Bilingual Education
16033 E. San Bernardino Road
Covina, California 91722-3900

Non-profit Org.
U.S Postage
PAID
Pasadena, CA
Permit No. 1132

CABE 2003

Registration Information

Deadline:

January 15, 2003

If the address is unknown, please forward to an interested or potential participant