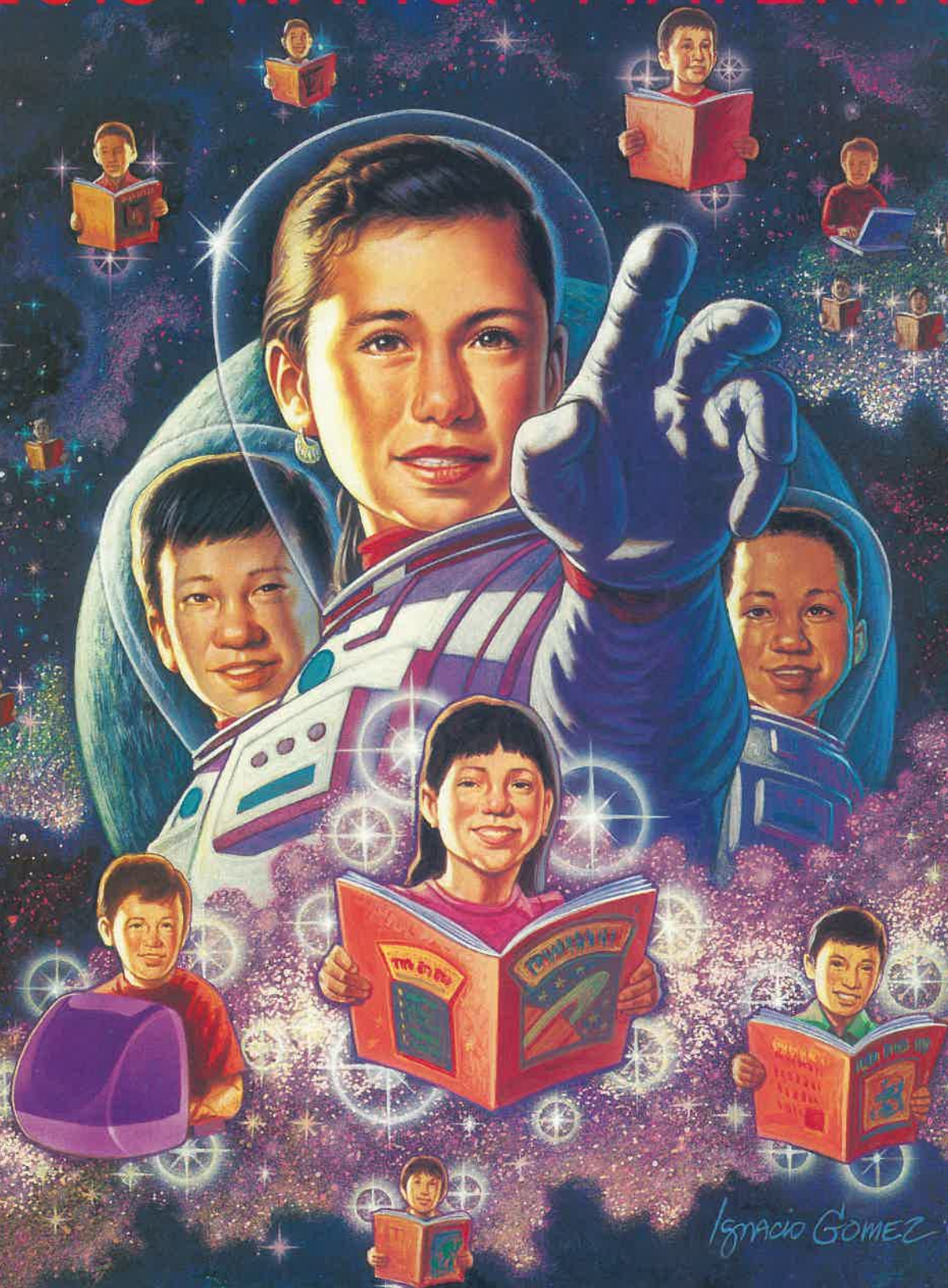


25th Annual CABE Conference

# REGISTRATION MATERIALS



*Ignacio Gomez '99*

## CABE 2000

Charting the New Millennium  
through a Constellation of Languages

San Francisco, California

March 20-23, 2000



# HIGHLIGHTS

## Workshops

Over 400 workshops representing all areas of education for English language learners will be offered at CABA 2000. Sessions will be scheduled throughout the three days, giving participants the opportunity to select workshops within their areas of interest. Workshop sessions will be held at the Moscone Center and Bill Graham Civic Auditorium. Workshop strands, institutes, and featured speakers are highlighted in this brochure.

## Exhibits

Exhibitors with materials in all areas of education for English language learners, including technology, will be in attendance providing participants the opportunity to review and purchase the latest in materials and publications. CABA 2000 will feature Exclusive Exhibit Hours (See Preliminary Agenda for Exhibit/Career Fair hours).

## Career Fair

School Districts and various agencies will be represented at CABA 2000 with the primary goal of recruiting educational professionals for their districts/organizations. This is the perfect opportunity to learn more about employment and professional opportunities within the education field. The CABA 2000 program will include a Career Fair section with employment opportunities from all organizations in attendance. CABA 2000 will feature Exclusive Exhibit Hours (See Preliminary Agenda for Exhibit/Career Fair hours).

## School Site Visits

Visits to a variety of exemplary bilingual education and English language learning programs will be available on Monday, March 20, 2000. Buses will depart the Moscone Center at 7:30 a.m. and return by 1:00 p.m. Please indicate first and second choice selections on the CABA registration form. If you would like more information, please contact CABA Headquarters at (213) 532-3850. Please note that there is a \$20.00 fee to participate in this event. Passes will not be available on-site.

## Meal Events

CABA 2000 will include three special luncheons and a banquet. Awards for outstanding service in the field of bilingual education will be presented at these meal functions. Tuesday's luncheon will feature the CABA Teacher of the Year award presentation. Wednesday's luncheon will honor the CABA Parent of the Year Awards and Student Writing Contest Winners. CABA's traditional banquet and dance will be held on Wednesday evening featuring the CABA Seal of Excellence Awards. Thursday's luncheon will feature the CABA Para-Educator of the Year Award.

On Tuesday and Wednesday there will be special "Meet the Author" Brown Bag Luncheons. High school students participating in the high school student institute on Monday will receive a brown bag lunch with registration. Teacher of the Year, Para-Educator of the Year, Parent of the Year, and Student

Writing Contest Information and Nomination forms are included in the CABA Multilingual News, the CABA Website [www.bilingualeducation.org](http://www.bilingualeducation.org) or by calling CABA Headquarters at (213) 532-3850.

## University Credit

CABA invites you to earn college credits through the San Francisco State University while participating at CABA 2000. For college credit pre-registration information, contact Lydia Stack at (415) 469-4000 or email her at [lstack@sfusd.edu](mailto:lstack@sfusd.edu). Registration and payment of fees can also be made on site at the University Credit table in the concourse area of the Moscone Center.

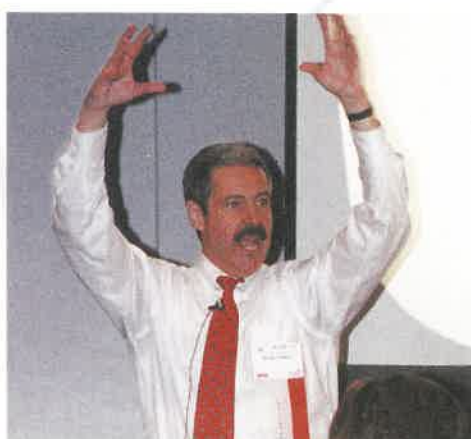
NEW

## High School Student Institute

A student institute for high school students will take place on Monday, March 20, 2000. This institute will focus on leadership, literature and culture. Please use the CABA registration form to register. Participants will receive a brown bag lunch with registration.

## CABA 2000 Artist

CABA welcomes Ignacio Gómez as the official CABA 2000 artist. Mr. Gómez will be available for poster signings during the conference.



# AGENDA



## Sunday, March 19, 2000

- 10:30 a.m. - 5:00 p.m. Joint Delegate Assembly (JDA)
- 2:00 p.m. - 7:00 p.m. Registration and Tote Bag pick up at the Moscone Center

## Monday, March 20, 2000

- 7:30 a.m. - 5:00 p.m. Registration and Tote Bag pick up at the Moscone Center
- 7:30 a.m. - 1:00 p.m. School Site Visits
- 8:30 a.m. - 3:00 p.m. Full Day Institutes
- 8:30 a.m. - 11:00 a.m. 1/2 Day Institutes
- 8:30 a.m. - 3:00 p.m. Parent Hospitality Room
- 10:00 a.m. - 6:00 p.m. Exhibit/Career Fair Set-up
- 12:00 p.m. - 3:00 p.m. 1/2 Day Institutes
- 3:30 p.m. - 5:00 p.m. Opening General Session @ Bill Graham Civic Auditorium
- 6:00 p.m. - 7:00 p.m. CABE Membership Meeting
- 7:30 p.m. - 11:00 p.m. CABE Executive Board Reception For Members Only (Everyone invited to become a member)

## Tuesday, March 21, 2000

- 7:30 a.m. - 5:00 p.m. Registration and Tote Bag pick up at the Moscone Center
- 8:00 a.m. - 5:00 p.m. Parent Hospitality Room
- 8:00 a.m. - 9:30 a.m. Workshops and Featured Speakers
- 8:30 a.m. - 3:00 p.m. Full Day Institutes
- 8:30 a.m. - 11:00 a.m. 1/2 Day Institutes
- 9:00 a.m. - 12:00 p.m. Exhibits/Career Fair
- 10:00 a.m. - 11:30 a.m. Workshops and Featured Speakers
- 12:00 p.m. - 1:30 p.m. Meet the Author Brown Bag Luncheon @ Bill Graham Civic Auditorium
- 12:00 p.m. - 2:00 p.m. CABE 2000 Teacher Recognition Luncheon, Moscone Center, Hall D
- 12:00 p.m. - 3:00 p.m. 1/2 Day Institutes
- 2:00 p.m. - 3:30 p.m. Exclusive Exhibit/Career Fair Hours
- 2:00 p.m. - 5:00 p.m. Exhibit Hall Remains Open
- 3:30 p.m. - 5:00 p.m. Workshops and Featured Speakers

NEW

## Wednesday, March 22, 2000

- 7:30 a.m. - 5:00 p.m. Registration and Tote Bag pick up at the Moscone Center
- 8:00 a.m. - 5:00 p.m. Parent Hospitality Room
- 8:00 a.m. - 9:30 a.m. Workshops and Featured Speakers
- 9:00 a.m. - 12:00 p.m. Exhibits/Career Fair
- 10:00 a.m. - 11:30 a.m. Workshops and Featured Speakers
- 12:00 p.m. - 2:00 p.m. Parent of the Year Awards & Student Writing Contest Luncheon, Moscone Center, Hall D
- 12:00 p.m. - 1:30 p.m. Meet the Author Brown Bag Luncheon @ Bill Graham Civic Auditorium
- 2:00 p.m. - 3:30 p.m. Exclusive Exhibit/Career Fair Hours
- 3:30 p.m. - 5:00 p.m. Workshops and Featured Speakers
- 6:00 p.m. - 7:00 p.m. No Host Cocktails
- 7:00 p.m. - 9:00 p.m. CABE 2000 Seal of Excellence Awards Banquet
- 9:00 p.m. - 12:00 a.m. Dance

NEW

## Thursday, March 23, 2000

- 7:30 a.m. - 9:30 a.m. Registration and Tote Bag pick up at the Moscone Center
- 8:00 a.m. - 9:30 a.m. Workshops and Featured Speakers
- 8:00 a.m. - 12:00 p.m. Exhibits/Career Fair
- 8:30 a.m. - 10:00 a.m. Parent Hospitality Room
- 10:00 a.m. - 11:30 a.m. Workshops and Featured Speakers
- 12:00 p.m. - 1:30 p.m. CABE 2000 Para-Educator of the Year Luncheon



# CABE 2000 STRANDS

## **Administration and Management**

- Program planning, implementation and evaluation
- School organization/shared decision-making
- Supervision, evaluation, and compliance issues
- Recruitment and staff development
- Budget and finance issues
- Model programs

## **Assessment and Evaluation**

- Multiple assessment options
- Site-based alternative assessments in content areas
- Standards and accountability

## **Cooperative/Collaborative Learning**

- Strategies for implementing cooperative learning
- Demonstration lessons and classroom materials

## **Critical Pedagogy**

- Problem posing and questioning
- Questioning power structures
- Participatory learning
- Strategies for developing voice and community

## **Dual Language/Two-Way Immersion Programs**

- Program planning, strategies and implementation
- Research and evaluation

## **English Language Development**

- Content-based learning experiences
- Methodology, strategies, and sample lessons
- Demonstrations and classroom materials
- English literacy development

## **Fine and Performing Arts**

- Visual and performing arts integrated into other areas of the curriculum
- Capitalizing on students' talents and creativity

## **High Achievers**

- Strategies for differentiating curriculum
- Identification of gifted and talented students
- Educational program development

## **Integrated Content - LI and SDAIE**

- Theme development for content based integrated literacy
- Multiple intelligences through Integrated Content Curriculum
- Models of Integrated Content based education
- Literature/language arts

## **Math - LI and SDAIE**

- Strategies for developing math from the concrete, symbolic, and conceptual level
- The development of math and literacy
- Integration of math with other curricular areas
- Research based math programs
- Computation/problem solving strategies and techniques
- Strategies to access curriculum

## **Multicultural/Diversity Education**

- Building upon students' cultural and linguistic backgrounds
- Student empowerment for academic success
- Multicultural studies in the classroom
- Anti-biased curriculum

## **Parent Education/Community Partnerships**

- Workshops for parents on the public education system, special programs and services
- Parents as partners in education
- Parent advocacy and empowerment

## **Policy Making/Legal and Political Issues**

- Review of current legislative and policy issues
- Compliance regulations and legal issues

## **Preschool/Early Childhood Education**

- Current research, models and curriculum
- Oral language and cognitive development
- Developmentally appropriate activities

## **Primary Language Literacy**

- Literacy development in the primary language
- Interactive journals, writer's workshop, and learning logs
- Balanced literacy instruction

## **Research and Program Evaluation**

- Proven model programs (3 yrs + data)
- Recent studies in cultural diversity, second language acquisition, and school reform
- Longitudinal studies in bilingual students' academic success
- Qualitative studies of classroom centered research
- Evaluation and assessment of bilingual programs

## **Science - LI and SDAIE**

- Science and computer literacy
- Textbook science/classroom experiments/environmental science
- Reading through science
- Research based science programs

## **Social Studies - LI and SDAIE**

- Cultural characteristics and differences
- Approaches to literacy with a focus on social studies
- Social studies and computer literacy

## **Special Education**

- Intervention strategies
- IEP development and parental input
- Current teaching methods/strategies
- Assessment and placement issues
- Inclusion

## **Teacher Certification/Staff Development**

- Credentials/certification
- Graduate and postgraduate opportunities
- Career ladders

## **Technology**

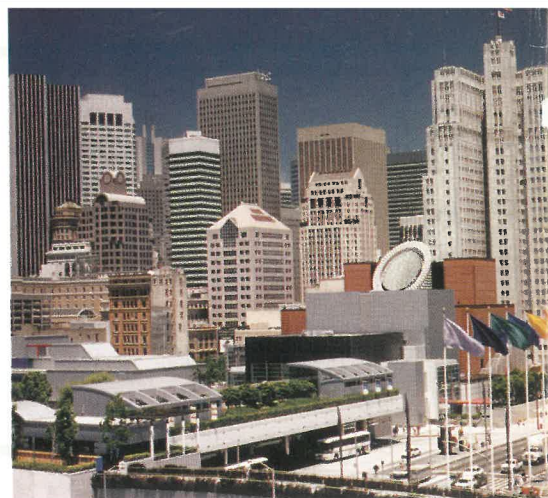
- Technology integration in schools
- Creative software for bilingual classrooms
- Creating access and equity in technology use and instruction



# You are Invited to CABE 2000

CABE announces its 25<sup>th</sup> Annual Conference, "CABE 2000: Charting the New Millennium through a Constellation of Languages", to be held at the Moscone Center and Bill Graham Civic Auditorium, March 20-23, 2000, San Francisco, California. This year's conference is being co-sponsored by the Alameda County Office of Education and the San Francisco Unified School District.

The California Association for Bilingual Education (CABE) promotes and supports educational excellence for all in California. CABE 2000 will provide intense staff development appropriate to the education of pre-school, elementary, secondary, adults and university English learners. Teachers and para-educators of bilingual, ESL/ELD - Structured English Immersion, Special Education, Title I, Migrant Education and Specially Designed Academic Instruction in English (SDAIE) programs will benefit from this staff development opportunity. School district board members, superintendents, administrators, business leaders and parents will also be given the opportunity to learn more about the methods available to instruct English learning students. The goal of CABE 2000 is to provide participants with the latest and most innovative methodology for teaching English learners.



Dr. Manning Marable



Dr. Pedro Noguera

## INSPIRATIONAL OPENING

**Purnima Jha**, Internationally renowned Kathak artist and scholar, Ms. Jha will open CABE 2000 with an inspirational dance.

## SPECIAL INVITED GUESTS

**The Honorable Vice President of the United States, Al Gore**, March 20, 2000

**The Honorable Cruz Bustamante**, Lieutenant Governor, State of California-March 20, 2000

## KEYNOTE SPEAKERS

**Dr. Manning Marable**, Educator/Author/Journalist, Director and Founder of the African American Research Institute at Columbia University. March 20, 2000 (confirmed)

**Dr. Agustín Garza**, Columnist for the Los Angeles Times-Seal of Excellence Award Banquet, March 22, 2000 (confirmed)

**Dr. Pedro Noguera**, Professor, Department of Social and Cultural Studies, University of California, Berkeley-Para- Educator of the Year Award Luncheon/Closing Session, March 23, 2000 (confirmed)

## FEATURED SPEAKERS:

These renowned speakers will give special presentations throughout the conference.

### Tuesday, March 21, 2000

**Dr. Laurie Olsen**, California Tomorrow

**Dr. Stephen Krashen**, University of Southern California

**Dr. Ofelia Zepeda**, University of Arizona

**Dr. Jim Cummins**, University of Toronto

**Dr. J. David Ramirez**, California State University, Long Beach, Center for Language Minority Education and Research

**Dr. Lori Arviso Alvord**, Dartmouth Medical School

**Dr. Terry Tafoya**, Storyteller

### Wednesday, March 22, 2000

**Jose Luis Orozco**, Recording Artist, Composer, Author and Radio Host of children's programs

**Dr. Alma Flor Ada**, University of San Francisco

**Gary Soto**, Author, *Too Many Tamales*, *The Pool Party*

**Dr. Reynaldo Macías**, UCLA

**Dr. Colin Baker**, University of Wales, Bangor

**Carmen Lomas Garza**, Author/Artist, *Family Pictures*

### Thursday, March 23, 2000

**Dr. Eugene Garcia**, University of California, Berkeley

**Delia Pompa**, NABE (National Association for Bilingual Education)

**Dr. Lily Wong Fillmore**, University of California, Berkeley

**Francisco Alarcón**, Poet, Author, *Cuerpo en llamas*

### Meet the Author

On Tuesday, March 21, 2000 and Wednesday, March 22, 2000 conference participants will have the opportunity to attend the special "Meet the Author" events. During this event authors will share readings and insights and participants will be provided with a brown bag lunch. Please note that this will be a ticketed event.

### Tuesday, March 21, 2000

**Michele Serros**, Poet, *Chicana Falsa*

### Wednesday, March 22, 2000

**Marlene Shigekawa**, Author, *Blue Jay in the Dessert*



# INSTITUTES



**NOTE:** Institutes are scheduled on Monday and Tuesday. There will be no regular workshop sessions on Monday, March 20, 2000.

## Monday, March 20, 2000 - Full Day Institutes

### Accountability and Performance: Using Student Data to Drive School Reform

This institute presents critical information on designing relevant accountability and performance systems for monitoring the academic progress of linguistically, racially, and culturally diverse students. This accountability system will provide district personnel, principals, and other educational leaders with meaningful school program information to guide curriculum and instruction for increasing student achievement. Presenters: Dr. J. David Ramirez, Dr. Pete Goldschmidt (Full Day)

### Working Together for Social Change: A Critical Vision for Education in the New Millennium

This critical pedagogy institute will prepare and support educators to take active roles in their continuing educational development through on-going teacher study groups. Presenters will provide materials and guidance to teachers seeking to become more effective critical educators. Presenters: Dr. Antonia Darder, Dr. Rosario Díaz-Greenberg, Laura Galicia, and Gina Castillo (Full Day)

### ELD Standards: Pathways to Academic Performance for ELD Students

Participants will be provided with information on the state adopted ELD standards. Hands on activities and collaborative work will allow participants to calibrate the standards to student work samples and language acquisition proficiency levels. Presenters: Adel Nadeau and Laurie Nesrala (Full Day)

### Think Like a Disciplinarian: Strategies for Gifted Emergent English Learners

In this institute participants will review "Think Like a Disciplinarian", a curriculum model that includes instructional strategies that introduce gifted and high achieving students to advanced content that parallels the core curriculum and standards. Presenters: Dr. Sandra Kaplan, Victoria Siegel, Emma Rodriguez, and Sandi Ishi-Ortiz (Full Day)

### Bilingual Education for Filipino American Children: Challenges and Opportunities

This institute will focus on the language education of Filipino and Filipino-American students. Presenters will explore how language and culture play an important role in the development of bilingual education programs for Filipinos in the U.S. Presenters: Leni Juarez, Patria Fermin, Rosita Galang, Cecilia Del Rosario, Edmundo Litton, Emily Berger, Magdalena De Guzman, and Leny Mendoza-Srrobel (Full Day)

### English Language Development and Literacy-Project GLAD

This institute will present research and share practical strategies for effective language and literacy instruction through the use of Project GLAD's curriculum model. Project GLAD is a unique blend of academic language and literacy that marries research ...strategies and classroom... from many fields and organizes classroom practice to ensure effective instruction for English learners. Presenters: Marcia Brechtel and Patsi Wagner (Full Day)

### Creating an Online Support Network for the Recruitment and Retention of Asian American Teachers

Within the last twenty years, the number of Asian American students in the U.S. public schools has tripled. While the number of Asian students has increased, the number of Asian teachers has not. The PSR-TEC Asian Languages Literacy and Literature Network will demonstrate the on-going online interactive forum that was created to support the recruitment and retention of teachers working with Asian students. Presenter: Kim Oahn Nguyen-Lam, Wayne Wright, Phitsamay Sichitkokhong, & Rose Tran (Full Day)

## Additional Full Day Institutes

### Early Childhood Literacy Institute

Presenters: Dr. Alma Flor Ada, F. Isabel Campo and Suni Paz

## Monday, March 20, 2000 - 1/2 Day Institutes

### Research Portraits on Proposition 227: Help us Define the Issues

This Institute will provide a forum for researchers to dialogue with administrators, teachers, parents, and para-educators regarding critical issues related to the implementation of Proposition 227. Each researcher on the panel will provide a brief portrait of their research and then shift to hearing what the audience considers to be critical issues regarding Prop. 227 implementation. Presenters: Dr. Eugene Garcia, Tom Stritkus, and Julia Curry-Rodríguez (1/2 Day)

### Community-Based Language Instruction:

#### A Case Study from Silicon Valley Korean School

This institute will explore effective instruction for Korean students through a case study of the Silicon Valley Korean School. This Saturday school is one of the largest community-based Korean schools in the United States. Presenters will share the mission and goals of the school as well as challenges and future recommendations. Presenters: Hyekung Sung and Mohan Kim (1/2 day)

### Students as Agents of Change - Institute for High School Students

This institute for high school students will introduce critical theory through the use of Paulo Freire's transformative educational practices. The presenter will share ways in which participants can use voice, dialogue, reflection, and action to become social agents for change in their communities. Institute participants will receive a box lunch with Monday registration. Presenters: Guillermo Terrazas, Jr., Emilina Coronado, and Nick Crisoto (1/2 Day)

### An Adventure in Literacy - Institute for High School Students

High school students will journey through a literacy adventure using art, music, drama and poetry. Participants will discuss topics related to identity, gender and culture through interactive experiences students will create products that reflect the various experiences of our multicultural society. Institute participants will receive a box lunch with Monday registration. Presenters: Maria Barillas, Virginia Carrizo, and Gigi Cronin (1/2 Day)

### Instituto de liderazgo para padres/madres de familia: una propuesta honesta para respeto y acceso

*Padres de familia del Distrito Escolar Unificado de San Francisco desarrollaron un documento titulado "Una Propuesta Honesta para Respeto y Acceso." Esta propuesta, basada en estudios académicos y experiencias propias, fue presentada y adoptada por la Mesa Directiva de Educación de San Francisco. Los padres, una representante de la Mesa Directiva y personal del distrito presentarán los pasos que se están tomando para promover la participación de los padres. Oradoras: Juana Flores, Pilar Mejia, Mary T. Hernández, and María de la Luz García*

### Parents, Teachers, and Students Discovering Science in the Home

This institute will present its audience with hands-on scientific experiments using materials commonly found in the home. Through demonstrations and audience participation presenters will use culturally based strategies to assist participants in becoming aware of their scientific talents. Presenters: Dr. Leo Hernández, Iris Haapanen, Juan Vásquez, and Linda White



# INSTITUTES

## Charting Success for the Future: "Making Tomorrow's Stars Shine"

Research supports that student success is dependent on home and school partnerships. This institute will share effective strategies to motivate parents to be involved in schools. Presenters will review ways to help parents deal with difficult issues in schools and ways they can work with teachers to help students achieve ELD and state content standards. Presenters: Melodie Rueckheim, Lois Norby, Nickolaisen Darrel, and Maria Garcia (1/2 Day)

## Making the Most of State and Federal Requirements

This institute will focus on State and Federal requirements that are supportive of quality programs for LEP students. Presenters will review the Office of Civil Rights and the California Department of Education process for conducting reviews of school district programs. Presenters will provide handouts of Federal and State requirements. Presenters: Susan Spelletich, Gloria Guinto, Hector Rico, and Yvette Hall (1/2 Day)

## English Learners in Special Education: An Update on "Guidelines for Language, Academic, and Special Education Services Required for English Learners in California Public Schools, K-12"

This institute will provide information and answer questions on language and disability-related issues for English learners in Special Education (birth to age 22). Assessment and evaluation, hiring of qualified personnel, IEP's, principled practice for English learners, and 227 implications will be addressed. Presenters: Louis Garcia, Leroy Hamm, and Belen Robles-Gonzalves (1/2 Day)

## Professional Development Venues That Work! From the 3-Hour to the 6-Day On-Going Workshop

A society changes, teachers' work changes, and so does their need to grow professionally. This Institute examines the needs of English language development and SDAIE teachers, and proposes different professional growth venues to satisfy diverse needs. Presenters: Bea Gonzales, Dr. Aida Walqui, and Anita Hernández (1/2 Day)

## Second Language Learning through Kagan Cooperative Learning

This active hands-on Kagan Cooperative Learning institute will demonstrate a variety of strategies and manipulatives that enhance language acquisition and content instruction. Presenter: Julie High (1/2 Day)

## Additional 1/2 Day Institutes

### New Teacher Institute (4-6) English

Presenters: TBA

## Tuesday, March 21, 2000 - Full Day Institutes

### Strategies to Empower Bilingual Readers in Content Area Classrooms

This institute offers research-based and classroom-tested methods and materials to assist bilingual students in becoming strategic readers and learners in content area instruction. Participants in this institute will learn engaging practices and review assessment tools that will help English learners develop critical content knowledge in English. Presenter: Dr. Katherine M. Kinsella (Full Day)

### Accelerated Schooling for English Language Learners

Important strategies for school effectiveness will be presented based on the latest Thomas & Collier research findings. These findings are part of an ongoing national study conducted in public schools. Longitudinal data on students acquiring English as a second language will be provided. Research findings which apply to all students, majority and minority, "at-risk" populations, and students with special needs will be presented. Presenters: Dr. Wayne P. Thomas and Dr. Virginia P. Collier (Full Day)

### En que consiste una buena educación: el sistema educativo en Oaxaca, México-lecciones de cultura y respeto

La Universidad Estatal de California, Stanislaus y el Instituto Estatal de Educación Pública de Oaxaca, México realizan cada año un intercambio educativo en la comunidad de Teotitlán del Valle, Oaxaca. Las oradoras presentarán experiencias y técnicas en la enseñanza de la lecto-escritura en español. Presenters/Oradoras: Dr. Nancy Jean Smith, Ines Carrasco Arrellanes, Rosalba C. Ortiz Ortega, y Lettie Ramirez (Todo el día)



## Thanks for the Memory-The Brain Research Institute

Join Dr. Pat Wolfe in this informative institute and hear the latest research on the human brain and how it learns. Find out why the brain is more like a sieve than a sponge, how emotions drive learning, and what is really meant by "developmentally appropriate practice." This institute will address research, classroom implications, and strategies that take into account how the brain learns. Presenter: Dr. Pat Wolfe (Full Day)

## Structured English Immersion Institute

This institute will provide both a theoretical and practical framework to assist teachers working with students who are learning in English but speak another language. Participants will have the opportunity to learn effective practices, share experiences in SEI settings, discuss the role of primary language and strategize ways to improve instruction. Dr. Kris D. Gutierrez (Full Day)

## Tuesday, March 21, 2000 - 1/2 Day Institutes

### Two-Way Bilingual Immersion: Bilingualism at its Best!

This half-day institute will provide participants with an in depth look at the theory behind two-way immersion and program models appropriate for various community contexts. This institute is designed for those who teach in new two-way programs or those districts interested in developing two-way bilingual immersion programs for their students. Presenters: Marcia Vargas and Rosa Molina (1/2 Day)

### New Realities in Early Literacy and Bilinguality

This institute will focus on ways to teach bilingual children across different political contexts. Presenters will address how to teach the alphabet, the genesis of children's interpretation of written language, the organization and assessment of various literacy contexts, the role of the teacher in deliberate mediation, and reading and writing instructional practices. Presenters: Dr. Barbara M. Flores, Dr. Esteban Díaz, Dr. Adelina Arrellano-Osuna, Esther Negrete, Rosa Villagomez, Celia López, Lupe López, Betty Herligy, Delia Villagomes, Jorge Delgado and Luz Levine

### Making Connections between Students' Family Stories and Standards

This institute will provide strategies and approaches to assist students in conducting meaningful exploration of issues that impact their lives. Examples of student work at various levels will be shared and presenters will demonstrate ways in which this work is connected to the California content standards. Presenters: Irene Villanueva, Cheryl Forbes, Leslie Gutierrez, Luz Chung, and Sandra Smith (1/2 Day)

### ¿Qué hay de nuevo en la literatura infantil latina?

La literatura infantil latina sigue creciendo. Esta presentación hará una revisión de las nuevas publicaciones en español de autores latinos en varios géneros y niveles. Se distribuirá una bibliografía. Habrá premios de libros donados por editores. Oradoras: F. Isabel Campoy y Dr. Alma Flor Ada (1/2 día)



# INSTITUTES

## **Acceso a la lectura-Proyecto de Lectura y Literatura de California (CRLP)**

*El Proyecto de Lectura y Literatura de California (CRLP) parte de la premisa que todo estudiante puede leer y escribir con éxito a nivel de grado. Para demostrarlo, el Proyecto implementa un programa de instrucción y evaluación que responde a la necesidad de cada estudiante. Este instituto compartirá con la audiencia ejemplos concretos de instrucción para llegar a la meta deseada. Oradoras: Yolanda Riquelme, Dolly Casco, Debbie Costa, Sandra Ceja y Carmen Zuniga*

## **Crossing Borders as Reflective Researchers: Liberating Funds of Literacy from Intercultural Community Knowledge**

This institute will explore the work of teachers as researchers, offering an array of projects that have been successfully implemented in bilingual/multicultural contexts. By critically examining practice, teachers will discover ways to bridge school and home cultures, and to utilize the literacies that children bring in the classroom. Presenters: Peggy Laughlin, Josephine Arce, Peter Baird, Katherine Issacson, Adriana Chairez, Kate Dixon-Clarke, and Adrian Andrade (1/2 Day)

## **Para-Educators in Educational Partnerships**

This institute will help participants explore existing and developing policies and practices that integrate paraprofessionals within the school community. This institute will provide a forum for discussion of strategies being used throughout the country to create career ladder opportunities, and ways in which we can continue to enhance the effectiveness of para-educators in schools. Presenters: Elsa Brizzi, Linda Davis, Dr. Michael Kenzok and Ceci Medina (1/2 Day)

## **Best Practices in San Francisco**

This institute will provide participants with an opportunity to hear about successful language programs in the San Francisco Unified School District: Chinese Two-Way Immersion, Spanish Two-Way Immersion and Chinese and Spanish Dual Language Enrichment. The panelists will provide information and rationale for the programs, academic challenges, staff recruitment efforts, budget needs, and available materials. Presenters: Amien Lau, Veronica Chavez, Gina Chow, Daisy Chan, David P. Wong, Angelica Trejo, Karen Chu, Diane Golton, and Jennie Lee (1/2 Day)

## **Discovering our Identity through Reading and Writing**

This institute will focus on the development of identity through writing. Come read, write and reflect on the importance of cultural and personal identity through print. Find out how your personal history enhances your ability to live in a multicultural world. Presenter: Norma Mota-Altmán (1/2 Day)

## **Connecting Teachers to Technology through the Lenses of Culture, Race, and Language**

The Pacific Southwest Regional Technology in Education Consortium (PSR\*TEC) provides a model of telementor training and staff development which integrates the lenses of culture, race and language into effective uses of technology and curriculum development. This institute will share the voices of teachers participating in the telementor program and examine issues of equity and how they relate to technology. Presenters: Kristin Brown, Gerda de Klerk, Jan Gustafson, and teacher participants (1/2 Day)

## **Teaching Alive! Five Standards for Effecting Teaching and Learning with a Focus on Linguistically and Culturally Diverse Students**

This institute provides culturally and linguistically responsive models for student-teacher interactions highlighting the use of technology. The Institute will review the Five Standards for Effective Teaching & Learning established by the Center for Research on Education, Diversity & Excellence and will share ways to put these standards into action. Presenters: Barry Rutherford, Priscilla H. Walton, Ruth Kim, and Kiyomi Inouye (1/2 Day)

## **Using Technology to Support English Language Development**

This institute will outline a research based framework for English language development, describe principles for enriching learning through technology, and provide examples of how these two frameworks can be successfully integrated. Presenters: Dr. J. David Ramirez, Kevin Rocap (1/2 Day)



## **Groupings That Work: Achieving English Language Learners' Maximum Potential in Heterogeneous Classes**

Teachers of English Language Learners often wonder when it is convenient to group students based on a relative homogeneous English language proficiency level, and when heterogeneity may be optimal. In this institute, ten different ways of grouping students and the rationale for these arrangements will be presented, experienced and discussed. Presenters: Dr. Aída Walqui, Bea Gonzales, Anita Hernandez, and Tomás Galguera (1/2 Day)

## **New Teacher Institute: K-3 English**

This institute will focus on the theory and practice of teaching English language learners in K-3 settings. The institute will use Cambourne's Conditions of Learning as a framework for effective instruction. Participants will learn literacy strategies including shared reading and interactive writing as well as ELD practices for beginning levels of language acquisition. Presenters: Magdalena Ruz González, Jessie Montes, Estrella Sundquist-Villegas, and Norma Levya (1/2 Day)

## **Superintendent & School Board Member Symposium**

A panel of administrators and educators will present district and school site options that allow for the continuation of effective program practices and development of new models for educating the English language learner. Participants will need to pre-register for this symposium, please see registration form. For further information please visit our Website [www.bilingualeducation.org](http://www.bilingualeducation.org) after November 5, 1999. Additional 1/2 Day Institutes

## **Standard-Based Portfolios in Bilingual Classrooms**

Presenters: Ermina García

## **Institute for New and Aspiring Administrators**

Presenters: Dr. Santiago Wood and Dr. Bruce Matsui

## **Creating an English Language Learner Friendly Master Schedule (9-12)**

Presenter: Sally Chou

## **Institute on Policy Issues for English Language Learners**

Presenter: Dr. Laurie Olsen

## **New Teacher Institute: K-3 Spanish**

Presenters: TBA





# CONFERENCE INFORMATION

## Hotel Reservations

All hotels listed on the CABA 2000 Housing Form offer conference rates. Some hotels are conveniently located within walking distance of conference activities. Complimentary ground transportation will be offered for hotels that are not within walking distance. Conference participants will make CABA 2000 housing reservations through the San Francisco Housing Bureau. Refer to the enclosed housing form for rates and deadlines. Make your reservations in a timely manner to secure conference rates at the hotel of your choice.

## Air Travel

In cooperation with the California Association for Bilingual Education, United Airlines, Delta Airlines and Southwest Airlines are offering discounted fares to CABA 2000 attendees.

You may make arrangements through your travel agent or by calling the airline directly.

**United Airlines** is offering special meeting fares for all attendees of CABA who use the Special Meeting Desk to book their reservations. Book early and take advantage of the promotional fares that give you the greatest savings! Earn a 5% discount off the lowest applicable fare, including First Class, or 10% off the mid-week coach fare. United is also offering an additional 5% off tickets purchased at least 60 days in advance. Simply call (or have your travel agent call) **1-800-521-4041 and refer to Meeting ID Number 583CF.**

Mileage Plus members receive full credit for all miles flown to this meeting. Tickets can be mailed by United, picked up at your local travel agency or United Airlines ticket office. You or your travel agent should call today as seats may be limited.

**Delta Air Lines** is offering special rates which allow you a 5% discount off Delta's published round-trip fares\* within the continental U.S., Hawaii, Alaska, Canada, Mexico, Bermuda, San Juan, Nassau, and the U.S. Virgin Islands. By purchasing your ticket 60 days or more prior to your departure date, you can receive an additional 5% bonus discount. \*Applicable restrictions must be met. Seats are limited. No discounts apply on Delta Express.

A 10% discount will be offered on Delta's domestic system for travel to the meeting based on the published unrestricted round-trip coach (Y06) rates. No advance reservations or ticketing is required, but if you purchase your ticket 60 days or more prior to your departure date, you can receive an additional 5% bonus discount. No discounts apply on Delta Express.

**To take advantage of these discounts, follow these simple steps:**

1. Call Delta **Meeting Network®** Reservations at **1-800-241-6760**, weekdays 7:30 a.m. - 11:00 p.m. or weekends 8:30 a.m. - 11:00 p.m. eastern time. Or, have your travel agent call Delta's toll-free number to obtain these same advantages for you.

**Refer to File Number 133394A.**

2. Travel in the continental U.S. Hawaii, Alaska, Canada, Mexico, Bermuda, San Juan, Nassau, and the U.S. Virgin Islands only. These discounts are available only through the Delta **Meeting Network®** Reservations toll-free number.

**Southwest Airlines** is offering a 10% discount on most of its already low fares for air travel to and from the event. You or your travel agent may call Southwest Airlines Group and Meetings Reservations at **1-800-433-5368** and reference the assigned **I.D. Code G0330 Code**. Reservations Sales Agents are available 8:00 a.m. - 5:00 p.m. Monday-Friday, or 9:30 a.m. - 3:30 p.m. Saturday and Sunday. You must make reservations five or more days prior to travel to take advantage of this offer.

## Auto Travel and Parking

There is no parking available at the Moscone Center and Bill Graham Civic Auditorium. There are several surrounding parking structures in the immediate areas of both the Moscone Center and Bill Graham Civic Auditorium.

## PRE-CONFERENCE EXTENDED LEARNING OPPORTUNITIES

(see Extended Learning Opportunities insert for registration information)

### Saturday, March 18, 2000

- Walking Tour of San Francisco Chinatown
- Tour of the Napa Valley Wine Country (English/Spanish)
- Visit to Monterey Bay Aquarium

### Sunday, March 19, 2000

- Whale Watching Expedition
- Family Sunday at San Francisco Museum of Modern Art
- Special Parents Program at San Francisco Museum of Modern Art
- Walking Tour of Mission Murals

### Monday, March 20, 2000

- San Francisco Museum of Modern Art Teacher Workshop on Modern & Contemporary Art
- Explore the San Francisco Exploratorium
- Family Math and Hands-On Science/Lawrence Hall of Science
- Special Admission to San Francisco Museum of Modern Art





# REGISTRATION

All CABE 2000 registrations must be submitted and processed in advance. There will be very limited on-site registration so please plan on pre-registering. Fill out the enclosed registration form completely; enclose payment, and mail postmarked no later than February 18, 2000, to:

**CABE 2000 Registration**  
P.O. Box 51204  
Los Angeles, California 90051-5504

Please do not send your registration form to the CABE address. Registration inquiries may be made to ADC Associates at their toll free number, 1-877-906-CABE.

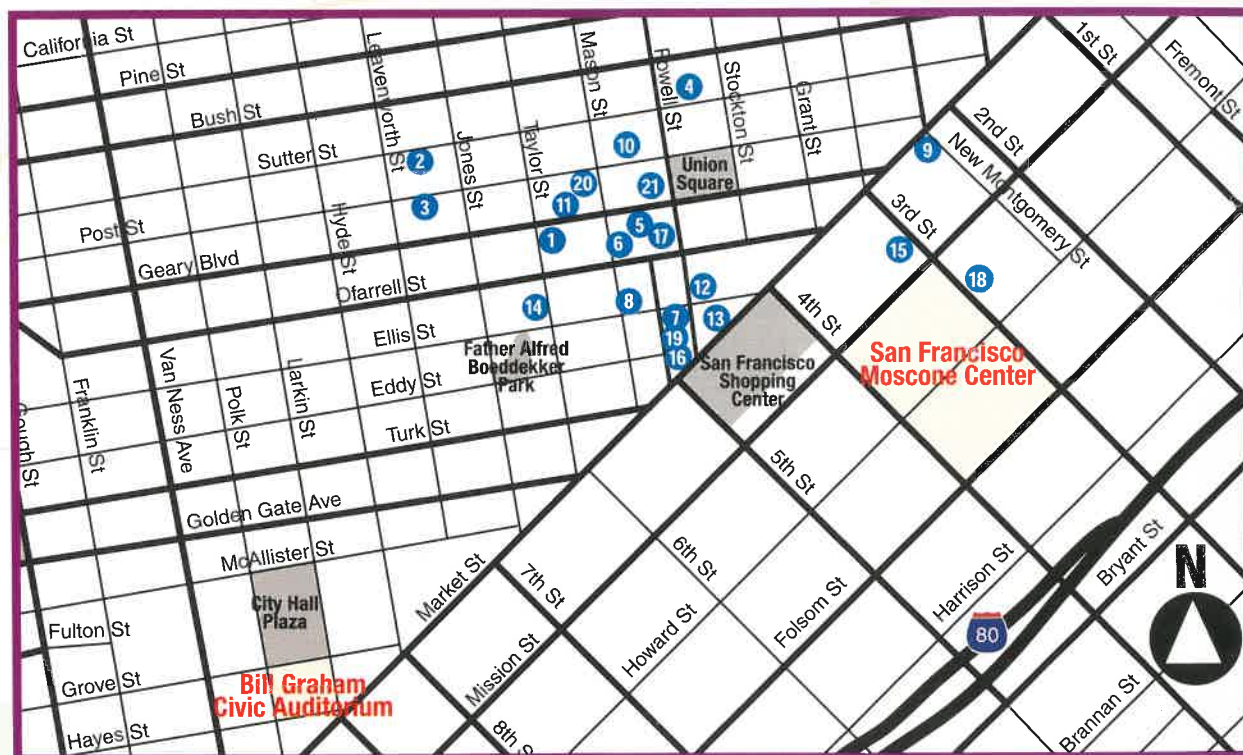
School site visit reservations must be made at the time of registration. Please read your registration form thoroughly as certain restrictions and penalties do apply. If you wish to participate in the Superintendent/School Board Member Symposium, fill in appropriate box on the registration form.

ADC Associates will return a preliminary postcard to you upon receipt of registration and payment. All other registration materials (conference badge, conference activity tickets, school site visit assignments) will be issued at the San Francisco Moscone Convention Center starting on Sunday, March 19, 2000 at 2:00 pm.

- Remember to bring your confirmation postcard
- Name badge must be worn for admittance to all conference events, workshops and exhibits.

## CABE 2000 Discount Opportunity

For those school districts designating CABE 2000 as "Staff Development Day(s)", a registration incentive of one free registration (excluding meals) is available to groups submitting 25 "like" registrations. Like registrations refer to either a full four day pass or a one day pass, regardless which category they fall into (member, non-member, or parent). All 25 registrations must be submitted on the same purchase order. For further information see the "Instructions and Information" form in this brochure.



## Hotel Accommodations surrounding the Moscone Center and Bill Graham Civic Auditorium

- |   |                               |
|---|-------------------------------|
| 1 The Clift Hotel                       | 12 Hotel Union Square         |
| 2 Commodore International Hotel         | 13 The Powell Hotel           |
| 3 Clarion Bedford Hotel at Union Square | 14 Ramada Inn at Union Square |
| 4 Crowne Plaza Union Square             | 15 The Argent Hotel           |
| 5 Handlery Union Square Hotel           | 16 The Pickwick Hotel         |
| 6 King George Hotel                     | 17 Villa Florence Hotel       |
| 7 Monticello Inn Union Square           | 18 W Hotel                    |
| 8 Hotel Nikko San Francisco             | 19 Hotel Milano               |
| 9 Palace Hotel                          | 20 The Donatello              |
| 10 Kinsington Park Hotel                | 21 The Westin St. Francis     |
| 11 Hotel Diva                           |                               |



# CO-SPONSORS

We acknowledge and thank our partial list of Co-Sponsors for their continuous support

## COUNTY OFFICES OF EDUCATION

Alameda  
Madera  
San Diego  
Santa Cruz

Contra Costa  
Orange  
San Joaquin

Kern  
Riverside  
San Mateo

Los Angeles  
San Bernardino  
Santa Clara

## SCHOOL DISTRICTS

ABC Unified  
Azusa Unified  
Burbank Unified  
East Side Union High  
Hayward Unified  
Montebello Unified  
Ocean View  
Rialto Unified  
San Francisco Unified  
Santa Ana Unified  
Sweetwater Union High

Alameda Unified  
Bakersfield City  
Cajon Valley Union  
Franklin McKinley  
Little Lake City District  
Moreno Valley Unified  
Pasadena Unified  
Salinas Union High  
San Jose Unified  
Santa Cruz City  
Val-Verde Unified

Alisal Union  
Banning  
Chula Vista Elementary  
Garvey School  
Long Beach Unified  
National City  
Pomona Unified  
San Bernardino City Unified  
San Mateo Unified  
Santa Maria-Bonita  
Whittier City

Apple Valley Unified  
Berkeley Unified  
Coachella Valley Unified  
Hacienda/La Puente  
Los Angeles Unified  
Oakland Unified  
Reef Sunset Unified  
San Dieguito Union High  
San Ysidro  
Stockton Unified

## UNIVERSITY SPONSORS

Center for Language Minority Education and Research,  
CSU, Long Beach  
Center for the Study of Books in Spanish for Children  
and Adolescents, CSU, San Marcos  
Chapman University-Concord Campus

CSU, San Marcos, College of Education  
National Hispanic University  
St. Mary's College School of Education  
UC Berkeley Graduate School of Education

## ORGANIZATIONS AND AGENCIES

California Association for the Gifted  
California Reading and Literature Project  
California Tomorrow  
EQUALS Family Math

Exploratorium Center for Teaching and Learning  
MARE-Marine Activities, Resources, and Education  
San Francisco Museum of Modern Art  
WestEd Equity Center







California Association for Bilingual Education  
660 S. Figueroa Street, Suite 1040 • Los Angeles, CA 90017

Non-Profit Org.  
U.S. Postage  
**PAID**  
Permit No. 1  
Whittier, CA

CABE 2000

REGISTRATION  
INFORMATION



DEADLINE:

**FEBRUARY 18, 2000**  
POSTMARK DEADLINE

If the addressee is unknown, please forward to an interested or potential participant

San Francisco